

DGSID

R:14-20

LOCALID

ASB-2

Start Depth

0

Stop Depth

Coring Start Time

9:25

Coring Stop Time

Drilling Notes:

Date

08/08/06

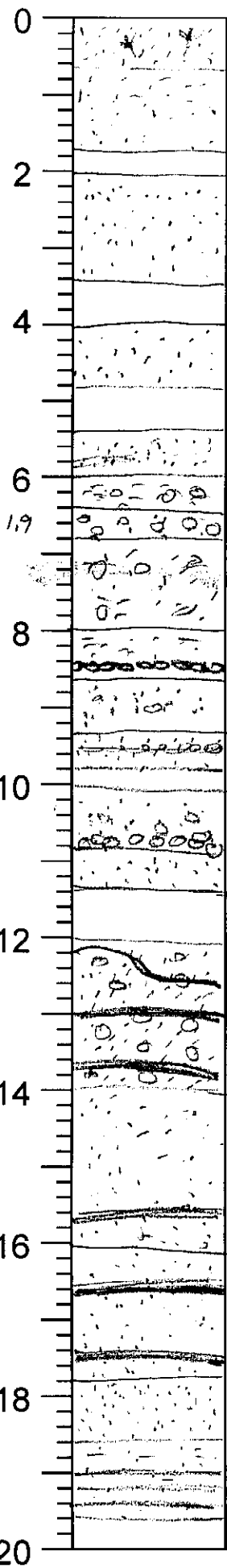
Described by

KWR

Blow Counts

Feet

Core Description



Sand, fine grained reddish brown color (5YR, 5/3) very loose + fluffy
 Sand, fine to medium grained, yellowish red (5YR, 5/8), very loose + fluffy
 Sand, fine, loose and fluffy reddish yellow (5YR, 6/8) 1.4
 sand more tightly packed, f. grained, yellowish red (5YR, 5/8) 1.4
 sand, f. grained 5YR 5/6 yellowish red, mostly lighter than above with interfingering layers or clay with light green sand + gravel (5YR, 4/6), 5YR 5/8
 yellowish red clayey sand with gravel (5YR, 7/1) (5YR, 5/8)
 Sandy clay, yellowish red (5YR 4/6) w/gravel layer, light grey sand, some gravel, fine, 5YR 6/4 (light red) reddish yellow sand, fine to medium grained 5YR (6/6) gravel layer 1.9
 sand with some gravel, gray (5YR 6/1) more gravel toward bottom, fine grained soft sand, gray (5YR 6/1) 1.4
 sand, fine grained with gravel throughout gray (5YR, 5/1) with black, sparkly heavy mineral layers. some horizontal, some roughly (mica) 2.4
 sand, fine grained, fines downward gray (5YR, 5/1) with heavy minerals and mica layer at bottom
 sand, fine grained, gray (5YR, 5/1) with heavy mineral and mica layers fluffy, loose sand 1.8
 Sand, reddish gray (5YR, 5/2) w/ sandy clay with heavy mineral and mica layers throughout + black dark gray (5YR, 4/1)

Core Description

Blow Counts Feet

DGSID

R114-20

LOCALID

A03-2

Start Depth

20

Stop Depth

40

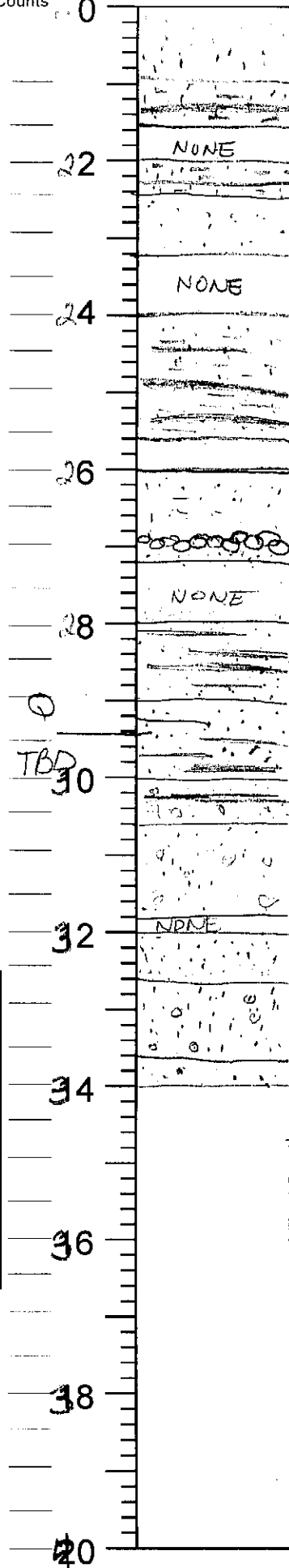
Coring Start Time

Coring Stop Time

Drilling Notes:

Date

Described by



fine gray sand (5YR 5/1)
 very fine
 fine dark gray clayey sand (5YR 4/1)
 with heavy mineral layers
 1.5
 reddish brown clay (5YR, 4/3) with mica
 heavy rust layer
 reddish gray sand (5YR, 5/2) with many very
 1.2 thin layers of heavy minerals + mica
 NONE
 24
 Sandy clay, mostly dark gray (5YR, 4/1)
 with rusty layers reddish brown
 (5YR, 4/4) with heavy mineral and
 mica layers
 1.6
 26
 gray (5YR 5/1) clayey ~~very fine~~ very fine with many heavy
 mineral layers that are thin. Towards bottom
 there is some rusty sand with med. size gravel
 gray (5YR 5/1) clayey fine sand with many
 thin heavy mineral layers
 NONE
 28
 sand med to large grained with gravel, many
 rust spots and black areas (Mn Oxide)
 a chemical transition zone between above and
 very pale brown sand (10YR, 7/4)
 2
 also part of above-listed transition zone
 very pale brown sand medium grained
 to large grained and gravel (10YR, 7/4)
 1.8
 32
 very coarse sand, some gravel, pale, yellowish
 brown (5YR, 7/6)
 fine to coarse grained sand, very pale
 brown (10YR, 7/4) some gravel
 34
 very coarse grained sand + gravel,
 reddish yellow brown (7.5YR 7/6)

Q
 TBD

40