

DGSID

R:13-04

LOCALID

JMO-DCAD-03-79

Start Depth

0

Stop Depth

Coring Start Time

Coring Stop Time

Drilling Notes:

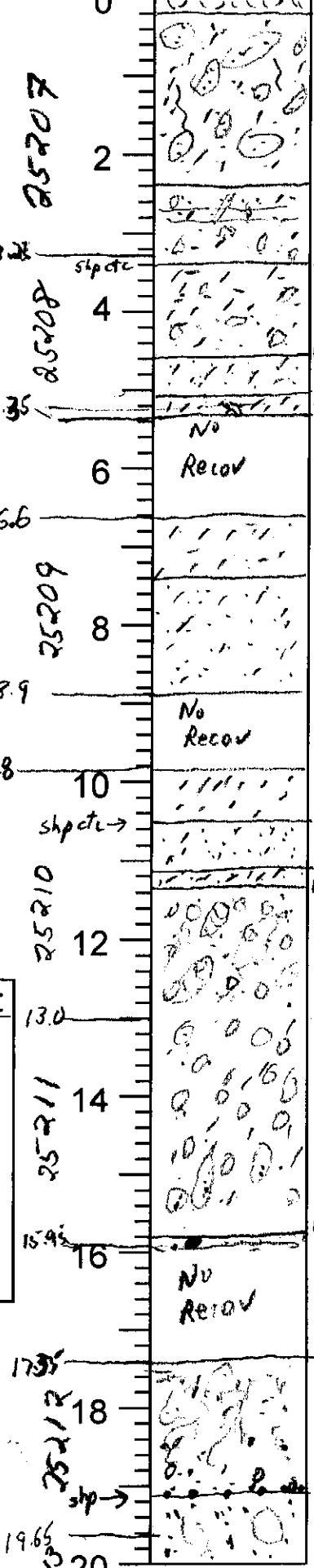
Date

1/11/11

Described by

KWR

Blow Counts
Feet



Core Description

0.2' Mix pine needles, silt + v f sd, grayish brn 2.5Y5/2
SAND; v f mod sily; mott lt gry 2.5Y5/2 + yellow 2.5Y 7/6 mottles more sandy than matrix - burrows or root fill (rounded like burrows); few root traces

2.35 SAND; v f sily sily; yellow 2.5Y 7/6 to pale yellow 2.5Y 7/3 by 3.1' bioturb - burrow mottles not as pronounced as above + smaller in diameter few reflect lam 2.75-2.9

3.4 SILT; sily mod cly; lt gry 2.5Y 7/1 w/ yl mott 2.5Y 7/6 bl/ 3.8 v sily sily (v f) w/ 4.1; burrow mottles

4.55 SILT; sdy; v f; fr cly; yl; 2.5Y 7/6 - bioturb

5.35 SILT; sily mod cly; sily sdy; v f; lt gry 2.5Y 7/1; few sdy filled burrows

6 Recov

6.6 SILT; sily mod cly; sily sdy v f; lt gry 2.5Y 7/1; mott yl 2.5Y 7/6 + lt gry 2.5Y 7/1

7.52 SILT to SAND; v f; pale yl 2.5Y 8/3; mica cn (both musc + biot)

8.9 No Recov

9.8 SILT; sily mod cly yl 10YR 7/8 grad to lt gry when dry + lt gry when dry
H olv brn 2.5Y 5/4 (wet)

10.5 SAND; v f; sily sily; fr-few mica; slight reaction to acid olv brn 2.5Y 5/3

11.1 SAND; v f; mod sily; olv brn 2.5Y 4/3; yl (sulphur) stain on silt; did not see oyster shells reported by JMO

11.3 SAND; v f; f; lt brnsh gry 2.5Y 6/2; sily sily; highly bioturb - many indiv burrows distinguishable mostly v f sd; burrow fill cleaner than matrix

bl/ 15.1' burrow fill f. v f w/ tr medium

15.8 SAND; f-m; lt brnsh gry 2.5Y 6/1; l cly silt ph

17.3 SAND; v f; sily sily; abd burrows (highly bioturb) indiv burrows diff to recognize by 18.1 f-m; 18.8 + 9 ph; vcrs lam @ 19.1'

19.1 SAND; f; few cn m; pale yl 2.5Y 7/3 burrows from above cn (sily matrix) by 20' no burrows

DGSID

R13-04

LOCALID

JMD-OCAO-03-79

Start Depth

20

Stop Depth

Coring Start Time

Coring Stop Time

Drilling Notes:

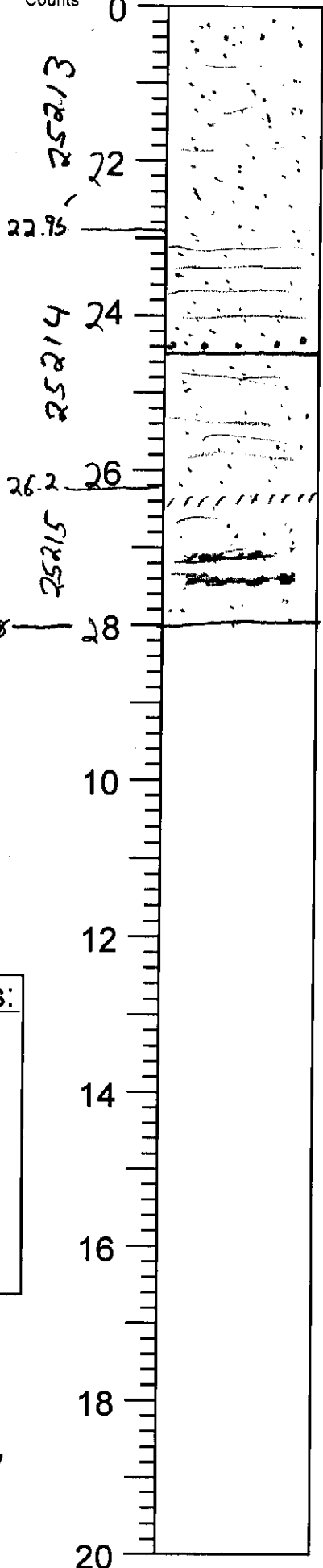
Date

1/11/11

Described by

KWR

Blow Counts
Feet



Core Description

SAND, f-m; pale y/2.5 Y 8/3; faint txt lam (nearly horiz); crsn cln; m-f; crs cn by 23'; vcrs-crs 24.3-24.6 lam cn b/l 23'; tr wh silt matrix

24.5 SAND, vf-f; tr silt; ohm cn; ohm lam cn; pale y/2.5 Y 8/6; faint txt lam

silt lam 26.4 - y/2.5 Y 7/6
27.1-27.3^{fe} cent sol lam - could be *Ophiomurpho* burrow lining (knobby txt ext-smooth interior)
brush y/10 Y R 6/6