

Blow Counts  
Feet

### Core Description

DGSID

Rh22-13

LOCALID

SEL-3

Start Depth

0

Stop Depth

Coring Start Time

Coring Stop Time

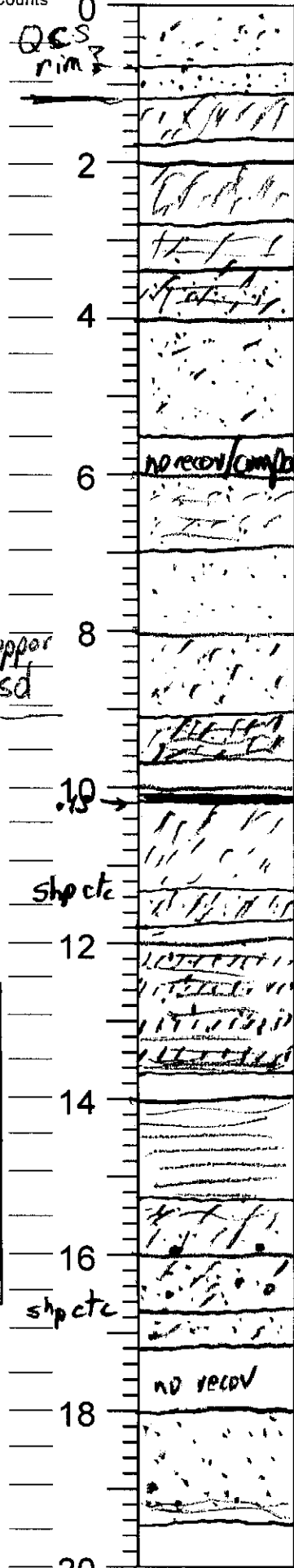
Drilling Notes:

Date

7/20/10

Described by

KWR



SAND; f-vf. v dk gry 2.5Y 3/1; org-rich  
loose; v slily sfty

0.8 SAND; f. lt gry 2.5Y 7/1; loose clean

1.2 SILT; org; some sd vf. v dk brn 7.5YR 2.5/2

1.8 as above sd % incr dn to slily-mod sdy  
bog iron

2.5 SILT; mod sdy; vf; dk brn 7.5YR 3/4; faint sdy lam  
org-rich but less than above

4.0 SAND; slty; dk brn - some org.

2.0 SAND; vf; slily-mod slty; strong brn 7.5YR 4/6  
w sorted; stress?

5.5 no record/compaction

6.0 SAND; vf; slily slty - clean; interlam w/  
sand vf; mod slty brnshyl 10YR 6/6  
w sorted

SAND; vf; slily slty - clean; brnshyl  
w sorted

8.0 SAND; vf; slily slty gradn slily-mod slty  
dk ylsk brn 10YR 4/4

10.5 SILT; slily sdy-sdy; vf; slily cly; olive 5Y 5/4  
w/ thin org + org silt lam

1.0 as above; 1-1.25 wood, brn fibrous

1.7 SILT; org; v slily sdy; vf; slily-mod cly;  
less org b/l. 8.5 olive 5Y 4/3-4/4

shp etc 1.35 SAND; vf; slty; olv gry 5Y 4/2

1.8 SAND; vf; slily-mod slty; interlam w/ SAND;  
slty; org-rich; slty zones .25-3, .45-6.5  
.95-1.05; 1.4-1.5; well lam 1.5-1.65

1.65 as above; slty zones incr in abundance dn;  
+ color dkns to dk olv gry 5Y 3/2; well  
defined lam H (less org) + dk (more org)

1.25 SILT; vf; slily sdy incr dn; to slily-mod  
sdy; dk olv gry; few fm-gran 1.9-3.0 not

2.0 lam as above grad to

shp etc SAND; f; slily-mod slty; few cn m-sml ppl olv  
7 SAND; vf; f; olv brn 2.5Y 4/3; faint lam 5Y 4/6  
1.2 slily slty

no record

18 SAND; as above; vf-f; olv brn; by .4 grad dn  
to fm cn; .8 + below m-crs; clean  
w/ dk lam 1.3 + 1.45 (org?)

1.5

DGSID

Rh22-13

LOCALID

SEL-3

Start Depth

20

Stop Depth

Coring Start Time

Coring Stop Time

Drilling Notes:

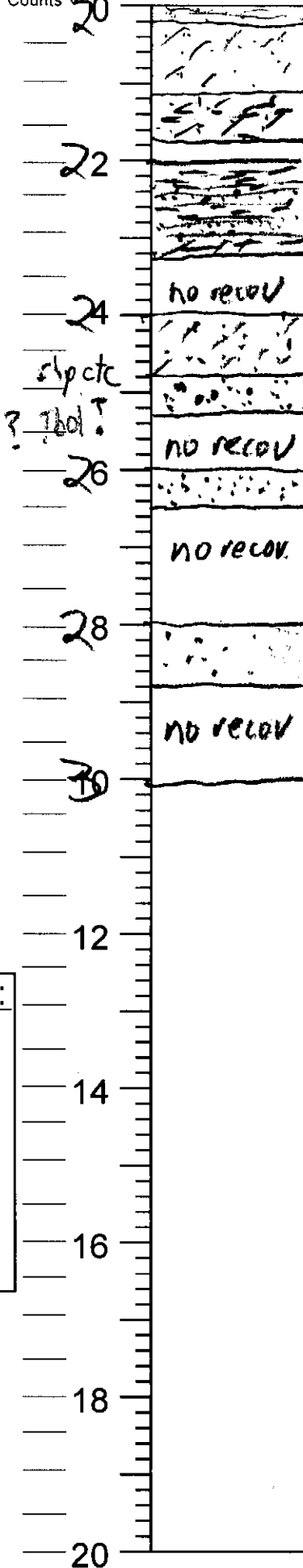
Date

7/20/10

Described by

KWR

Blow Counts  
Feet



Core Description

2 SAND, f-vf some m-crs; mod slty; w/dk lam (cont)  
 1.2 SAND, vf; mod slty dk gry 5Y 4/1 few slily  
 clay lam  
 1.1 SILT, sdly, vf; dk grnsh gry 1 GLEY 10Y 4/1  
 1.7 few clay lam b/c mod clay  
 22 CLAY, slty; lam w/ sand vf-m; dk grnsh  
 gry; few crs  
 1.25  
 24 no recov  
 SAND, vf-f mod slty grd dn vf-f,  
 dk grnsh gry  
 1.8 SAND; c-vc, slily slty; lt gry 5Y 7/1, clean  
 1.3  
 26 no recov  
 SAND, f-vc, clean slily slty  
 crs-m dk grn  
 1.5 cn (? charcoal or chert?) lt olv gry  
 5Y 6/2  
 28 SAND, f-vc, slily-mod slty, tv ohm lam;  
 1.8  
 30 no recov