

Preliminary Sample Description

Test Hole #5, Cedar Swamp, #Rg 10

Rg 22-1 (Rg 10) elev. 40'

0'-2'	Pit	Road fill
2'-5'	2 1/2' Pit	Sand, black, fine, silty, clayey. P45
5'-8'	Top 7'-9' core	Sand, light gray, fine with clay, dark brown, organic matter.
8'-14 1/2'	Bottom 7'-9' core	Sand, light gray, fine. P45
14 1/2'-18 1/2'	16'-18' core	Sand, light gray, fine, with some bands of clay blue. P45
18 1/2'-22'	19'-21' core	Clay, black, silty to sandy. P45
22'-26'	22'-24' core	Sand, gray, fine. P45
26'-36'	28'-30' core	Clay, blue. P45
36'-54'	42'-44' core ✓	Clay, dark gray-blue, silty. P45
54'-70'	54'-55' core	Sand, brown, coarse, hard, pebbles in lower part.
70'-74 1/2'	Top 73'-75' core	Clay, green, with sand.
74 1/2'-82'	Bottom 73'-75' core	Sand, blue-green, coarse-medium, start loss of drilling mud.
82'-118'	104'-106' core	Sand, light gray, coarse
118'-135'	124'-126' core	Sand, light greenish-gray, medium to coarse with occasional 1/8" bands of clay, green.
135'-136'	Top 135'-137' core	Clay, gray.
136'-150'	Bottom 135'-137' core	Sand, gray, medium.
150'-163'	155' ditch	Clay, blue.

at
 6' 1/2' from
 6' 1/2' from
 6' 1/2' from

at
 6' 1/2' from
 6' 1/2' from
 6' 1/2' from

at
 6' 1/2' from
 6' 1/2' from

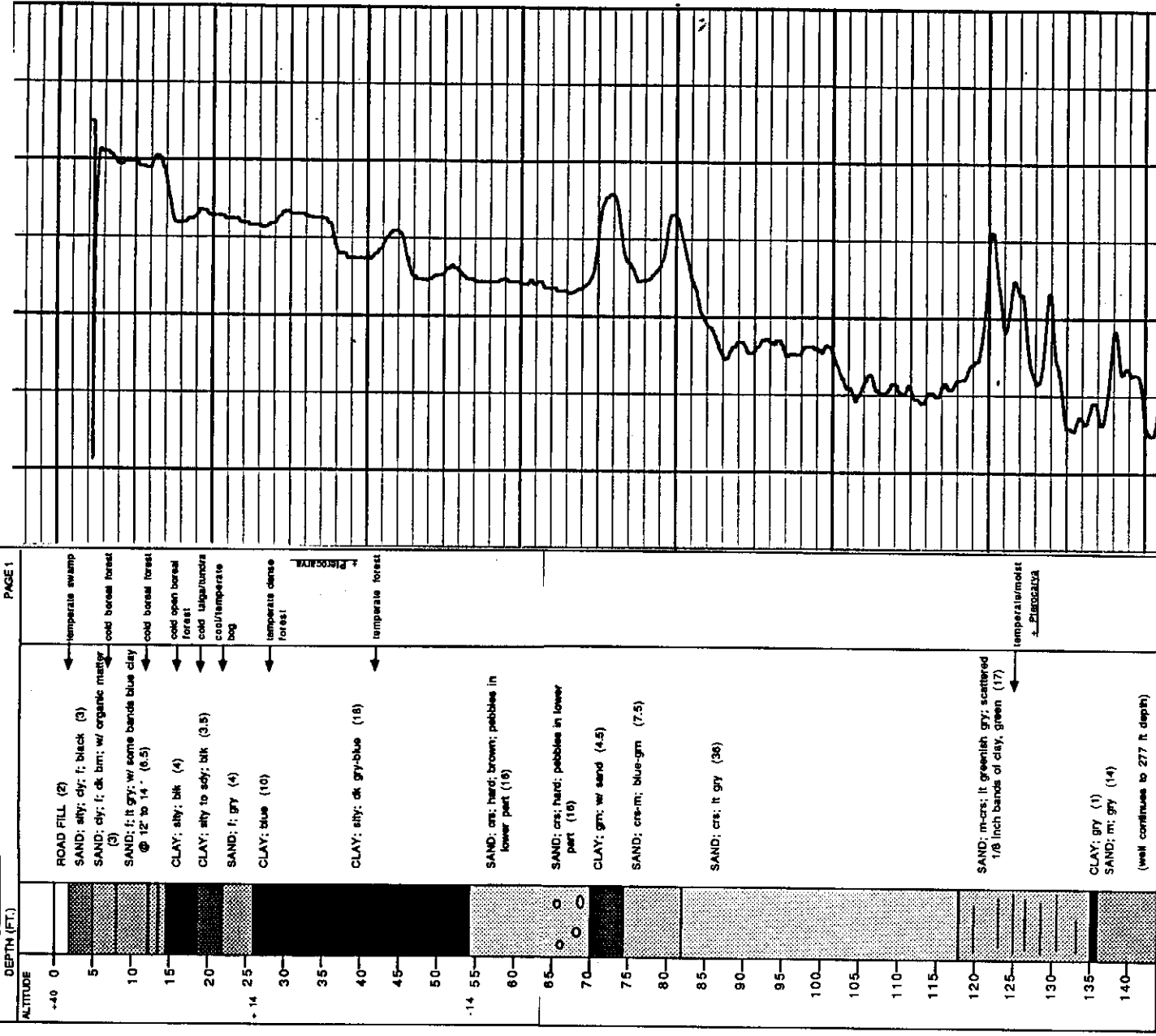
at
 6' 1/2' from
 6' 1/2' from

#Rg 10

163 ⁰ '-165'	163'-ditch	Clay, blue, lignite
165'-177'	165'-167' core	Clay, blue, silty.
177'-185'		Sand, fine.
185'-189'		Clay, see electric log.
189'-199'		Sand, fine.
199'-202'		Clay, see electric log.
202'-208'	227' ditch	Sand, fine to medium, with thin clay lenses.
228'-257'	248' ditch	Sand, gray, fine.
267'-271'	267' ditch	Sand, gray, fine becoming very fine toward bottom.
271'-277' bottom	277' ditch	Sand, gray-tan, fine.

LOCALITY Rg 22-01 SURFACE ALTITUDE (FT)
 LAT/LONG 382845 751806 40
 GENERAL LOCATION CEDAR SWAMP

PAGE 1



0 20 40 60 80 100 120 140 160 180