

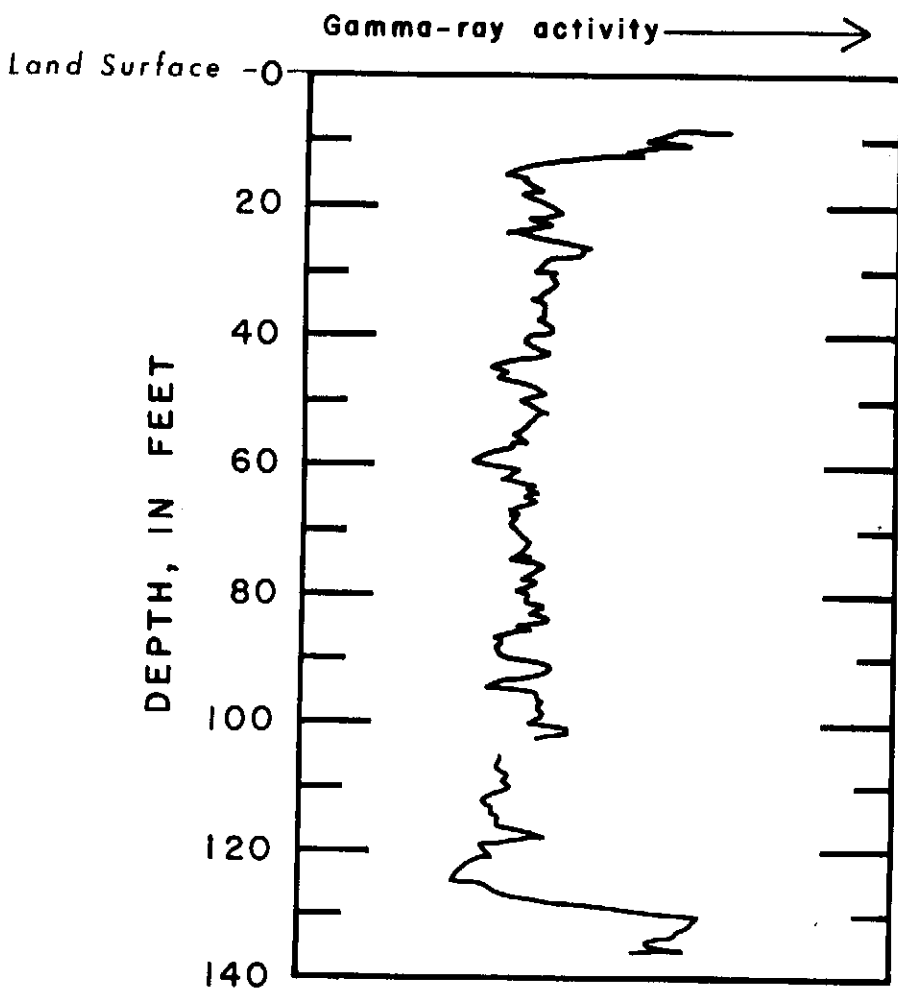
~Delmar Rd32-0Z

WI-BF 72

WI-BF 72

(Altitude: 52 ft.): Auger hole (Geologist's log)

Sand, very fine to fine, silty, well sorted, yellow tan	2	2
Sand, fine to medium, gray tan	.5	2.5
Sand, very fine to medium, silty, well sorted, micaceous, orange tan	2.5	5
Clay, silty, light gray tan	3	8
Sand, fine to medium, clayey, well sorted, white gray	3	11
Sand, loose, from "feel" of rig and from gamma log; no representative cuttings	109	120
Sand, fine to granule, poorly sorted, arkosic, orange tan	2	122*
Sand, loose, from "feel" of rig and from gamma log; no representative cuttings	6	128
Clay, from "feel" of rig and from gamma log	7	135



Altitude of land surface above mean sea level = 52 feet

Total depth logged = 136 feet

Well	Lithology	Thickness (feet)	Depth to base (feet)
WI-BF 72	(Continued) Sand, fine to medium, clayey, well sorted, gray	2	137*
	COMMENTS: *Cored intervals described in log; 120 ft to 122 ft; recovery 16 in; 135 ft to 137 ft; recovery 24 in. Ran gamma log to 140 ft Base of Columbia Group is at 128 ft below land surface and 76 ft below sea level.		
WI-BF 73	(Altitude: 45 ft.): Hydraulic Rotary (Driller's log) Top soil	1	1
	Sand, fine to medium, tan, with yellow clay layer	11	12
	Sand, fine to coarse, tan	10	22
	Sand, fine to coarse, brown, with iron ore	15	37
	Gravel, iron cemented	2	39
	Sand, fine to coarse, tan	22	61
	Sand, fine to coarse, brown, with some gravel	37	98
	Gravel and blue clay	5	103
	Clay, blue with some layers of fine sand	14	117
	Sand, fine to medium, gray	38	155
	Sand, fine to medium, with some gray clay	13	168
	Sand, fine to coarse, gray	40	208
	Sand, fine to medium, gray, with gray clay layers	4	212
	COMMENTS: Base of Columbia Group is at 98 ft below land surface and 53 ft below sea level. Subcropping unit is Manokin Aquifer.		