

DGSID **Qj55-07**

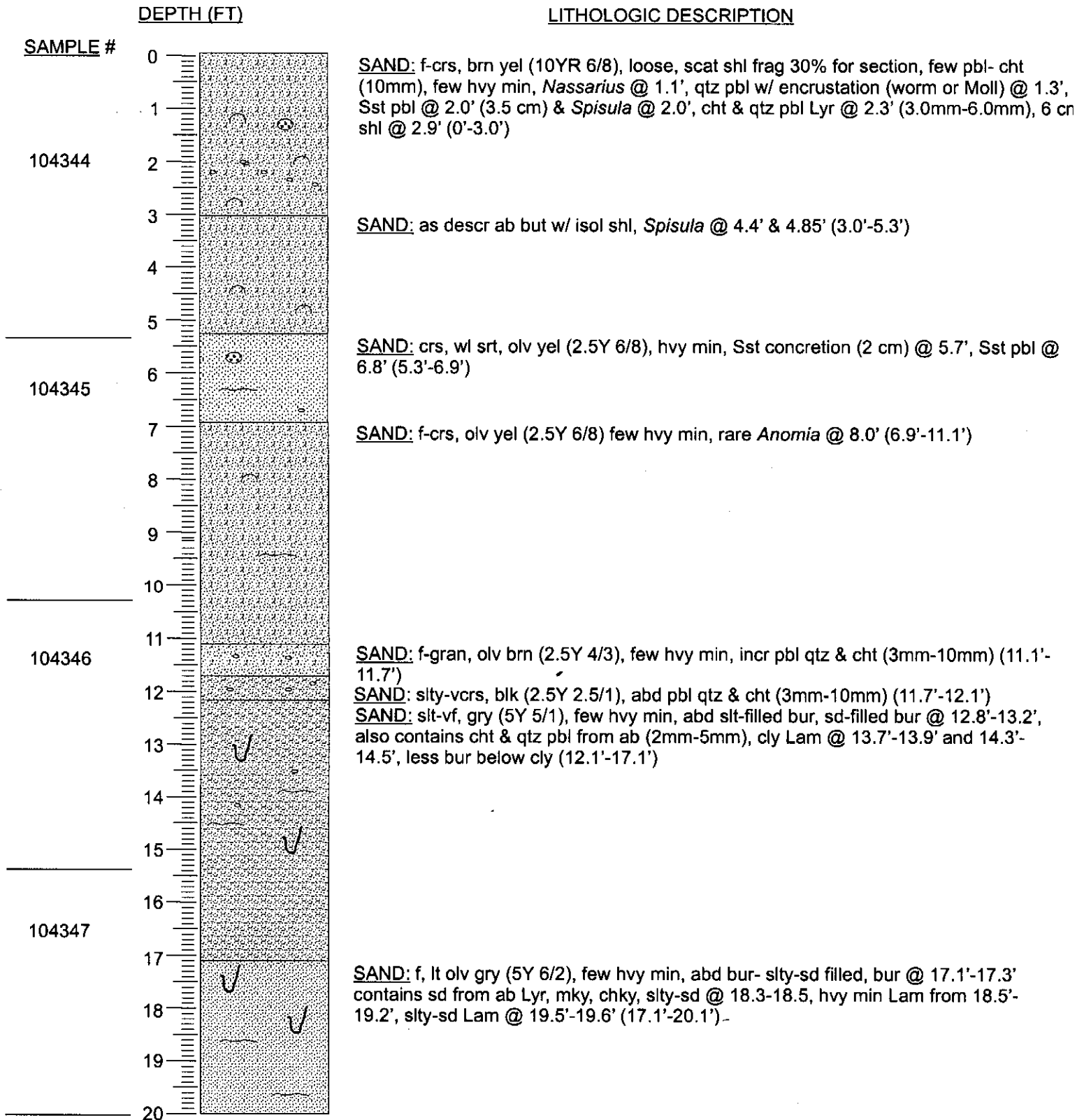
DATE DESCR. **1/4/08**

WATER DEPTH (FT) **32.2**

32.2

LOCAL ID. **KHV-121**

DESCR. BY **KMcK**





TEST BORING LOG

Project: VIBRATIONAL CORING
BORROW AREA E
BETHANY BEACH, DELAWARE

Boring Number: **KHV-121**
Contract Number: 04151127.16
Sheet: 1 of 1

Boring Contractor: ALPINE OCEAN SEISMIC SURVEY
NORWOOD, NEW JERSEY
Boring Foreman: N. CUPIC
Drilling Method: VIBRACORE
Drilling Equipment: 271B PNEUMATIC VIBRACORE
Schnabel Representative: M. PENZONE/J. BEIDEMAN
Dates Started: 5/17/07 Finished: 5/17/07
Location: 185738.45 N; 773746.42 E
Ground Surface Elevation: -32.2 (feet)

Groundwater Observations					
	Date	Time	Depth	Casing	Caved
Raw (See Note 2)	5/17	---	35.0'	N/A	N/A
Corrected	5/17	---	32.2'	N/A	N/A

DEPTH (FT)	STRATA DESCRIPTION	CLASS.	ELEV. (FT)	STRATUM	SAMPLING		TESTS	REMARKS
					DEPTH	DATA		
	POORLY GRADED SAND, CONTAINS SHELL FRAGMENTS - BROWN	SP					S-1 SIEVE	(0.0 to 5.0 ft)
5.0	POORLY GRADED SAND, CONTAINS SHELL FRAGMENTS - BROWN	SP	-37.2		5		S-2 SIEVE	(5.0 to 10.0 ft)
10.0	POORLY GRADED SAND, CONTAINS SHELL FRAGMENTS - BROWN	SP	-42.2		10		S-3 SIEVE	(10.0 to 11.3 ft)
11.3	SILTY SAND - GRAY	SM	-43.5				S-4 SIEVE	(11.3 to 15.0 ft)
15.0	POORLY GRADED SAND WITH SILT - GRAY	SP-SM	-47.2		15		S-5 SIEVE	(15.0 to 19.8 ft)
19.8	BOTTOM OF BORING @ 19.8 FT.		-52.0					Recovery = 99%

TEST BORING LOG 04151127.16 DE BETHANYBEACH.GPJ SCHNABEL.GDT 7/16/07

- Comments:**
- VISUAL DESCRIPTIONS WERE MADE DURING CORE OPENING PROCEDURES BY ASTM D2487 AND CLASSICATION BY ASTM D422.
 - FOR DEPTH TO MUDLINE NOMENCLATURE, REFER TO THE GENERAL NOTES.
 - NORTHING & EASTINGS REFERENCE NAD83, DE STATE PLANE COORDINATE SYSTEM.
 - ELEVATIONS REFERENCE NAVD88 DATUM.