

Blow  
Counts

Core Description

DGSID

Q145-18

LOCALID

BEB-3

Start Depth

0

Stop Depth

20

Coring

Start Time

Coring

Stop Time

Drilling Notes:

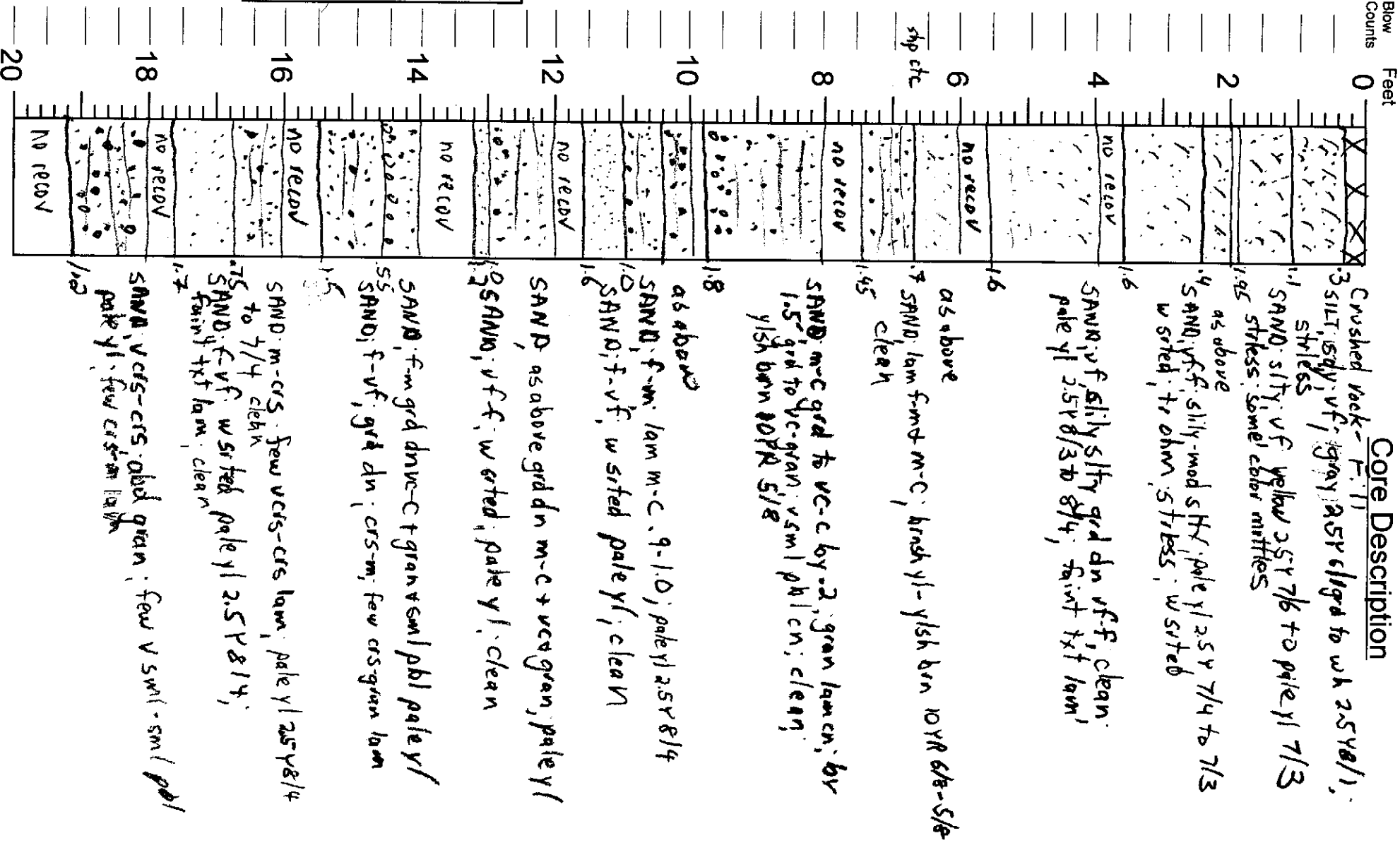
Descr. in lab

Date

10/09/24

Described by

KWR



Crushed rock - fill

3 SILT, sdy, vf, gray, 2.5R 6/3 to wh 2.5Y 8/1, streaks

1.1 SAND, sily, vf, yellow 2.5Y 7/6 to pale y/ 7/3 stress, some color mottles

1.95 as above

1.6 SAND, vf, f, sily-mod sHY, pale y/ 2.5Y 7/4 to 7/3 w sited, tr ohn, stress, w sited

1.45 as above

1.18 SAND, m-c grad to vc-c by .2, gran lam ch, br 1.5' grad to vc-gran, vsm pl ch, clean; y/ sh brn 10YR 6/8-5/6

1.0 SAND, f-vf, w sited, pale y/, clean

1.6 SAND, as above gradn m-c + vcc gran, pale y/

1.2 SAND, vf, w sited, pale y/, clean

1.5 SAND, m-crs, few vcs-crs lam, pale y/ 2.5Y 8/4 to 7/4 chx

1.7 SAND, f-vf, w sited, pale y/ 2.5Y 8/4, faint txt lam, clean

1.2 SAND, vcs-crs, abd gran, few vswl-sm, pol pale y/, few coarse lam

1.0

20

Blow  
Counts Feet

Core Description

DGSID

A145-1B

LOCALID

BEB-3

Start Depth

20

Stop Depth

40

Coring

Start Time

Coring

Stop Time

Drilling Notes:

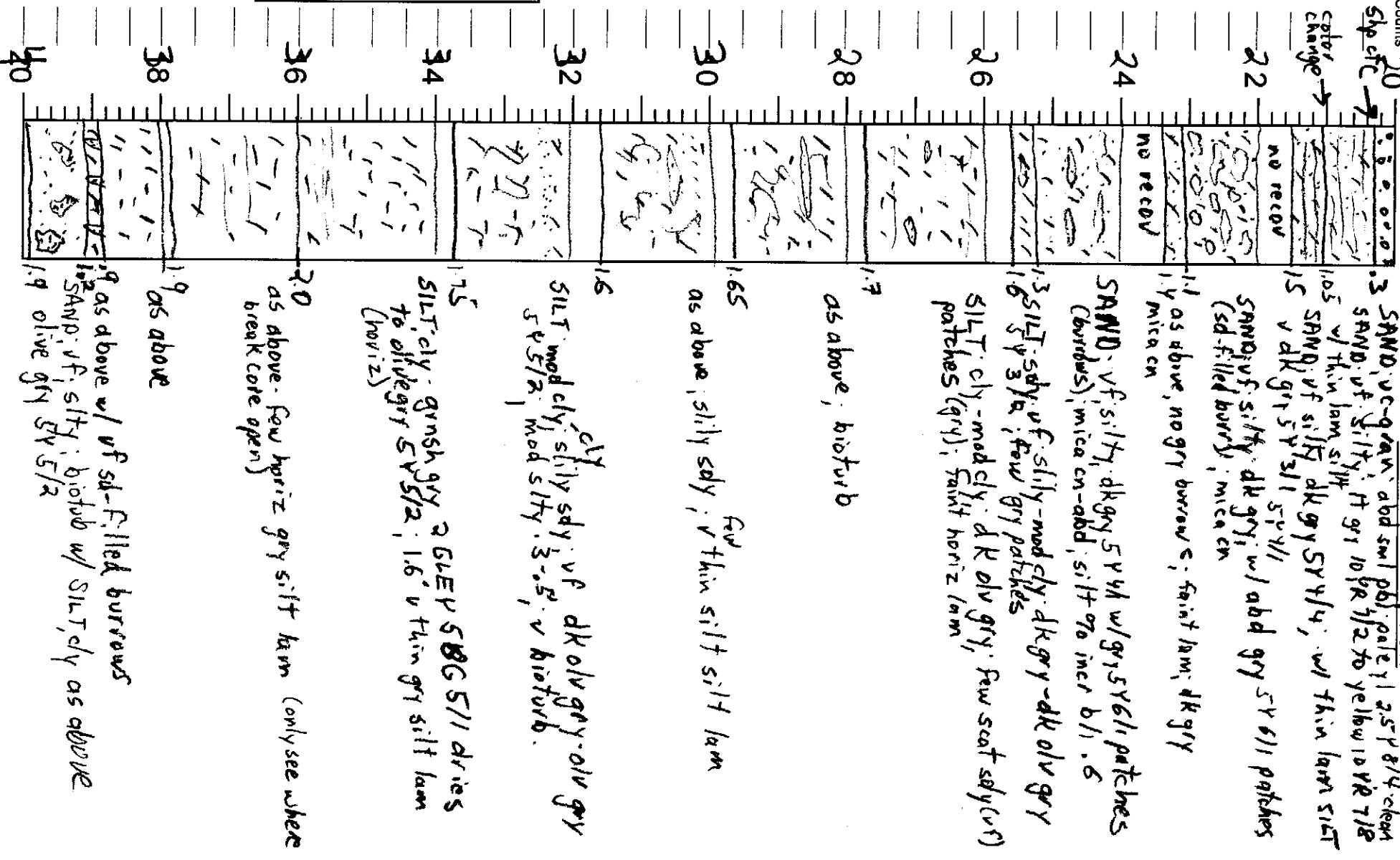
descr. in lab

Date

10/09/24, 27

Described by

KWR



Blow  
Counts

Core Description

DGSID

Q:45-18

LOCALID

BER-3

Start Depth

40

Stop Depth

60

Coring

Start Time

Coring

Stop Time

Drilling Notes:

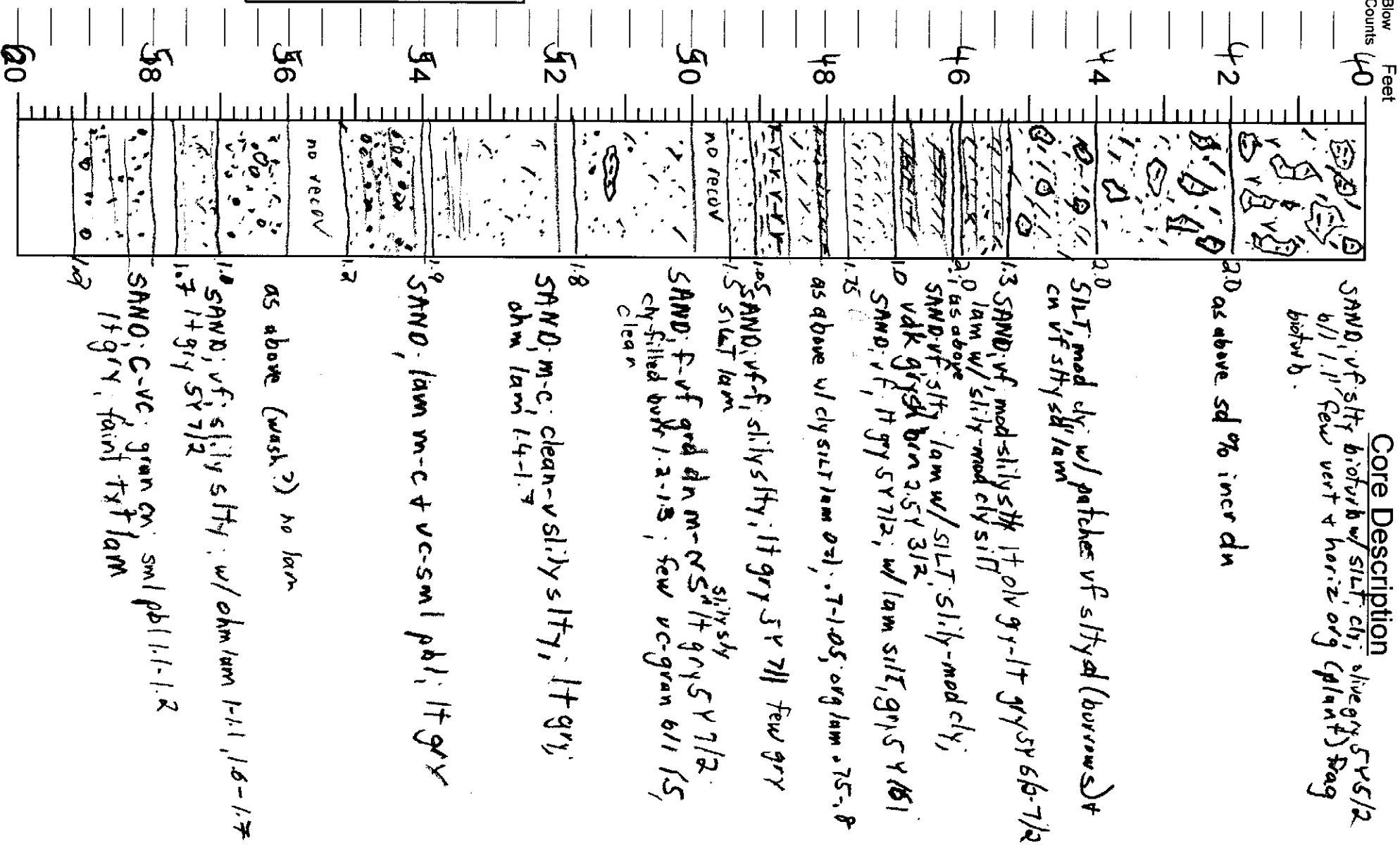
Descr in logs

Date

10/09/27

Described by

KMR



DGSID

Q:45-18

LOCALID

BER-3

Start Depth

60

Stop Depth

68

Coring

Start Time

Coring

Stop Time

Drilling Notes:

descr in lab

Date

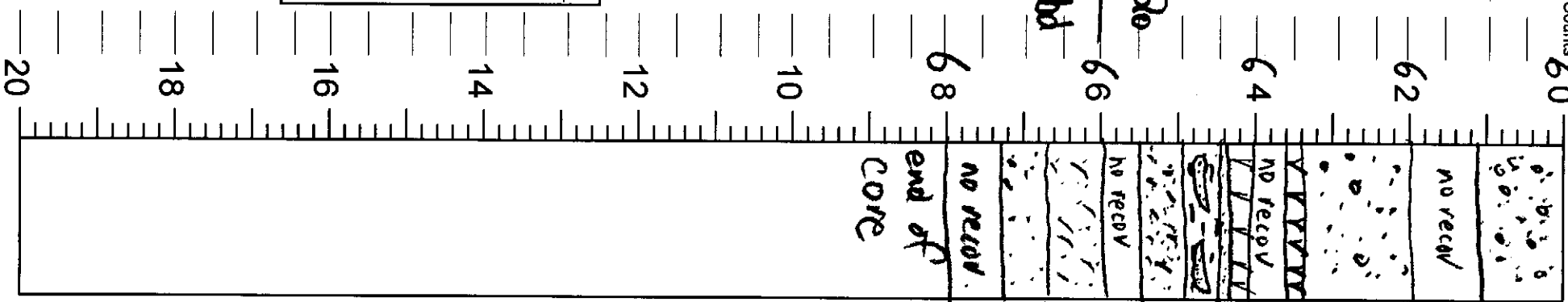
10/09/27

Described by

RWR

Blow Counts

Feet



Core Description

SAND, vc-c, gran abd, sm pb, phen, abd, thin  
H GR SV 711, (en on top)  
105

SAND, vc-c; gran en-abd; H GR SV 711

14 PEAT, black 25/1;  
5Y

PEAT blk, 5Y 2.5/1, some disruption  
w/ sand (wash at top of core); 3-35% sand,  
9 clay, sity dk gry sv 711, w/ lenses f H gry

15 SAND, f-m, mod sity, bioturb; few blk org  
frag, gray sv 6/1, compact

17 SAND, f-m, mod sity; m en, gray sv 6/1  
13 SAND, f-m, mod sity; gray sv 6/1, mod  
13 sity

no recov.  
end of  
core