

DGSID

Qg34-30

LOCALID

MSB-18

Start Depth

0

Stop Depth

Coring Start Time

Coring Stop Time

Drilling Notes:

Thru augers
6'
8-10 hard
drilling

Date

7/27/10

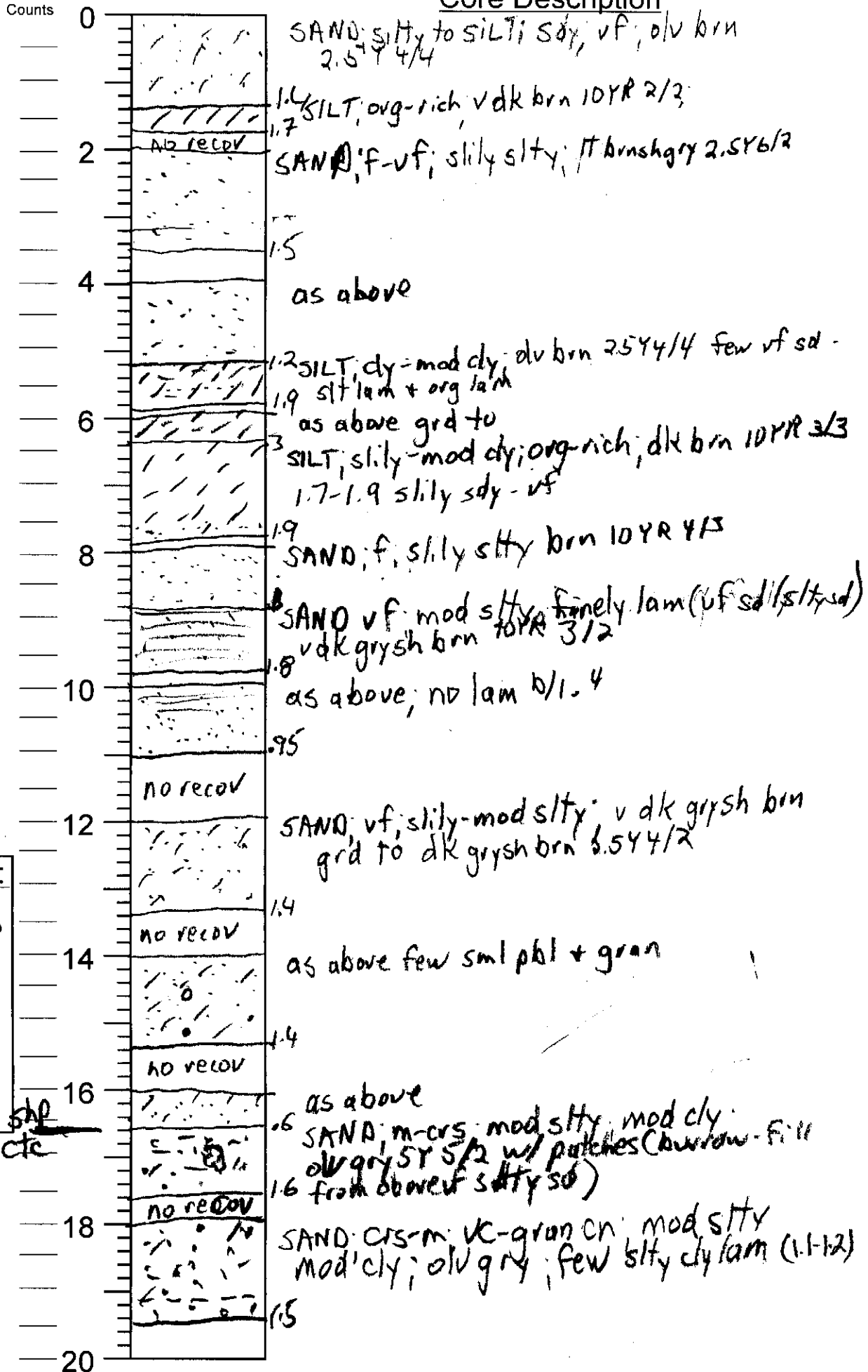
Described by

KWT

Blow
Counts

Feet

Core Description



DGSID

Qg34-30

LOCALID

MSB-18

Start Depth

20

Stop Depth

Coring Start Time

Coring Stop Time

Drilling Notes:

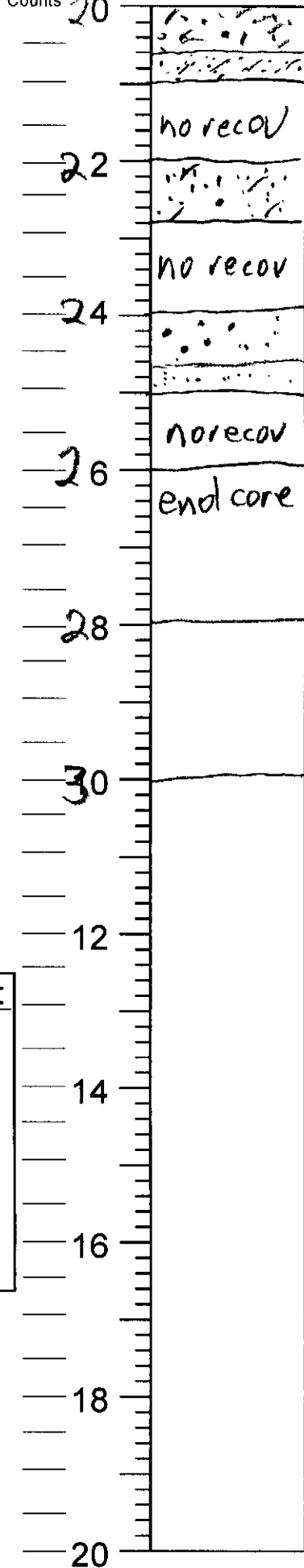
Date

7/27/10

Described by

KWR

Blow Counts Feet



Core Description

as above SAND; c-vc; gray
0.6 olv gry ST 4/2; mod slty; silty-mbd clv
1.0 SAND; f-m; mod slty-silty slty; gray
ST 6/1

as above grd to crs-m; .7 back to
.8 whi silt matrix

as above c-vc; .7 back to m-f
1.0

22

24

26

28

30

12

14

16

18

20