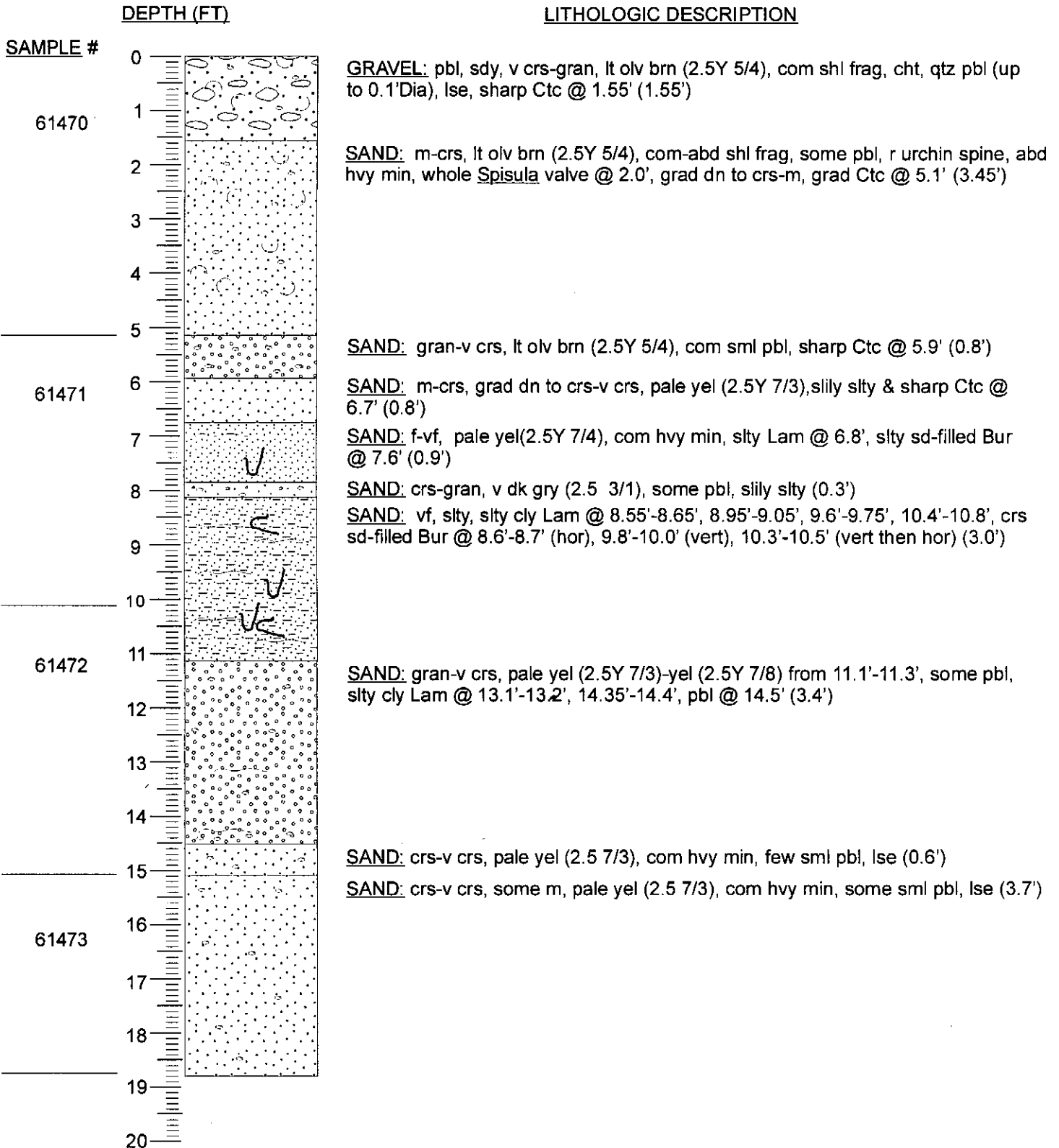


DGSID **Pk52-03** DATE DESCR. **1/31/02** WATER DEPTH (FT) **47.9**

LOCAL ID. **DGS01-17** DESCR. BY **KWR**



DGSID **Pk52-03** DATE DESCR. **1/31/02** WATER DEPTH (FT) **47.9**

LOCAL ID. **DGS01-17** DESCR. BY **KWR**

INTERPRETATION

0-5.9' Holocene, inner shoreface

5.9'-11.1' Pleistocene, outer shoreface or subtidal tidal flat

11.1'-18.8' Pleistocene, subtidal channel