

DGSID

0134-37

LOCALID

RER-5

Start Depth

0

Stop Depth

20

Coring Start Time

Coring Stop Time

Drilling Notes:

THRU AUGERS
16'

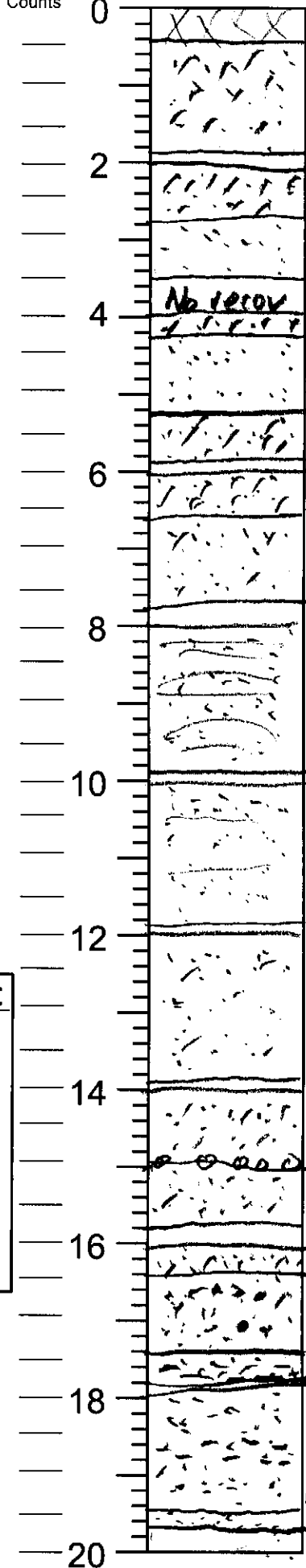
Date

08/07/10

Described by

KNR

Blow Counts
Feet



Core Description

FILL, sand, rock, later chip bag
 SAND, f, silty, dk ylsk brn 10YR 4/4
 compact
 1.9 as above
 2.8 SAND, f-m; loose, crs cn brnsh yl
 10YR 6/8
 3.7 No recov
 4.2 SAND, f-m; silty compact, dk ylsk brn
 5.1 SAND, f-m; loose, crs cn; brnsh yl
 6.0 SAND, vf, silty; lt olv brn 2.5Y 5/4
 6.9 as above
 7.8 SAND, vf, shly slty; lt gry 2.5Y 7/2
 loose; few mica
 8.7 as above, finely lam
 9.6 SAND, f-m; lt olv brn 2.5Y 5/6; few-cn
 mica, wet; faint lam.
 10.5 SAND, f-m; lt olv brn 2.5Y 5/4
 mica cn; shly slty
 11.4 as above; pbl lam @ base
 12.3 SAND, f-vf; olive yl 2.5Y 6/8; shly slty
 13.2 as above, grdc to
 14.1 SAND, m-f; w/ crs lam; dk ylsk brn
 10YR 4/6
 15.0 CLAY, silty, w/ f sd lam gry + dk ylsk brn
 16.8 SAND, f-m; crs cn; cly .6-.7 (cly lam)
 crs dn to m-f; dk ylsk brn - lt gry
 17.7 SAND, f, m cn; lt gry 2.5Y 7/2

DGSID

0:34-37

LOCALID

REB-5

Start Depth

20

Stop Depth

40

Coring Start Time

Coring Stop Time

Drilling Notes:

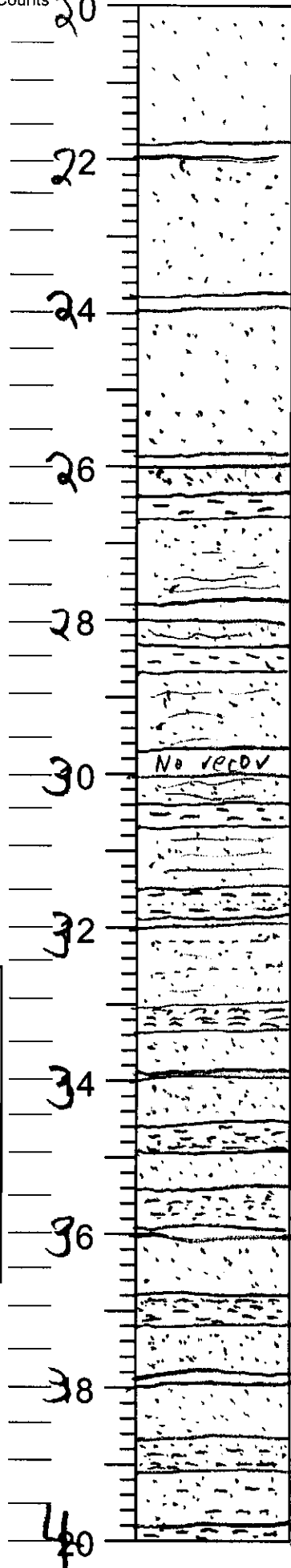
Date

7/10/08

Described by

KWR

Blow Counts
Feet



Core Description

20 SAND; f-m; lt olv gry 5Y 6/2; few ylsk brn matt, ohm ch; clean

22 SAND; f. lt olv gry - ylt 5Y 6B ohm ch

24 1.8 grds to SAND; m-f; cns ch. by 25' m-c. brnsh yl 10YR 6/8; few faint lam

26 1.9 as above
 0.4 CLAY, sticky; lt gry 2.5Y 7/1 - could be burrow fill
 0.7 SAND; f; ohm abd; brnsh ylt/grd ch to lt gry 5Y 7/2; ohm lam ch

28 0.3 as above
 0.65 CLAY, stiff. lt olv brn 2.5Y 5/4; stily sd; vf; SAND; vf; f; ohm abd; lt olv gry 5Y 6/2; ohm lam ch

30 No recd
 1.7 as above
 0.4 CLAY, stiff; lt olv brn 2.5Y 5/4; few odor lam (Hvd/k)
 0.7 SAND; f-vf; ohm abd; lt olv gry 5Y 6/2; ohm lam ch; few mica

32 1.5 CLAY, stiff; lt olv brn 2.5Y 5/4; w/ vf sd lam
 0.9 SAND; f-vf; lt gry 2.5Y 7/2; w/ thin clay lam + ohm lam

34 1.0 CLAY; w/ thin sd lam; pink - lt olv brn sd % to decr
 1.35 SAND; f-vf; lt gry 2.5Y 7/2, ohm ch - abd
 0.5 SAND as above; pale brown 10YR 6/3
 0.95 CLAY; stiff; pale brn; w/ vf sd lam 9-9.5
 0.95 SAND; f-vf; pale brown; ohm ch
 1.4 CLAY; stiff; pale brn; w/ vf sd lam

36 1.4 SAND; f-vf; pale brn; ohm ch
 0.8 CLAY; stiff; pale brn w/ vf sd lam. 8-1.0
 1.2 SAND; vf; pale brn; few ohm lam

38 1.1 as above
 0.7 CLAY; stiff; pale brn w/ vf sd lam sd % ↓ ch
 1.1 SAND; vf; w/ scat v thin clay lam

40 2.0 CLAY w/ vf sd lam pale brn

DGSID

0:34-37

LOCALID

REB-5

Start Depth

40

Stop Depth

50

Coring Start Time

Coring Stop Time

Drilling Notes:

Date

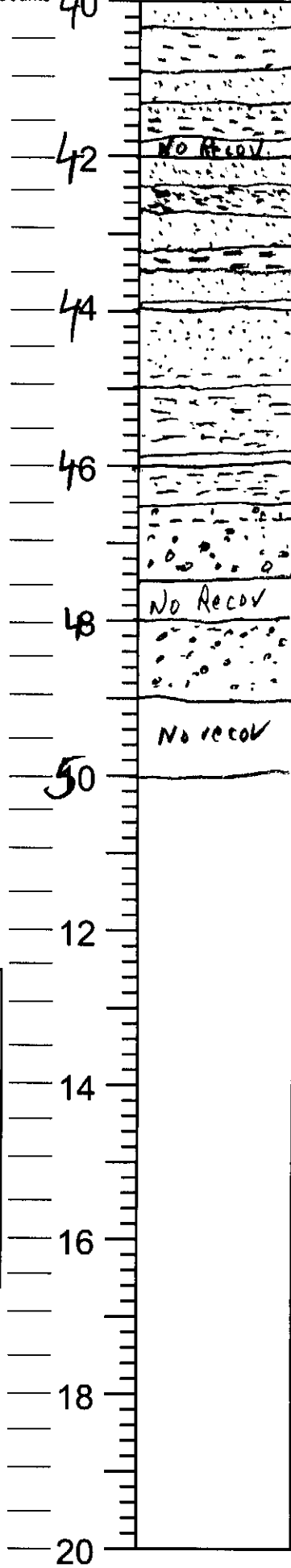
7/10/08

Described by

KWR

Blow Counts

Feet



Core Description

35 SAND; vf-f; lt ylsk brn 10 PR 6/4; ohm cn
 CLAY; stiff; w/ vf sd lam; sd 20 b dn
 9 SAND; vf-f; lt ylsk brn 10 PR 6/4; ohm cn
 1.3 CLAY; stiff; w/ vf sd lam 1.3-1.5
 1.8 No Recov
 4 SAND; vf-f; lt ylsk brn; few mica; few ohm lam
 CLAY; vf-f; lt ylsk brn - lt gry w/ vf sd lam
 7 SAND; vf-f; str brown 7.5 PR 4/6; few slty lam
 1.3 CLAY; stiff; pale brn - lt gry
 1.9 SAND; vf-f; lt ylsk brn
 SAND; vf-f; lt ylsk brn 10 PR 6/4; few cly
 lam - 8-1.0 abd ohm b/l 1.8
 1.0 CLAY; stiff; w/ vf sd lam; pale brn - lt gry
 1.9 as above
 55 SAND; c-vc; few gry cly lam. 55-7
 1.5 few sm l pbl b/l 1.2
 1.8 No Recov
 SAND; vc-c; gran cn lt gry 2.5 PR 7/1
 1.0 No recov

12
14
16
18
20