

DGSID

0:25-39

LOCALID

Start Depth

0

Stop Depth

20

Coring Start Time

Coring Stop Time

Drilling Notes:

Thru augers @ 12

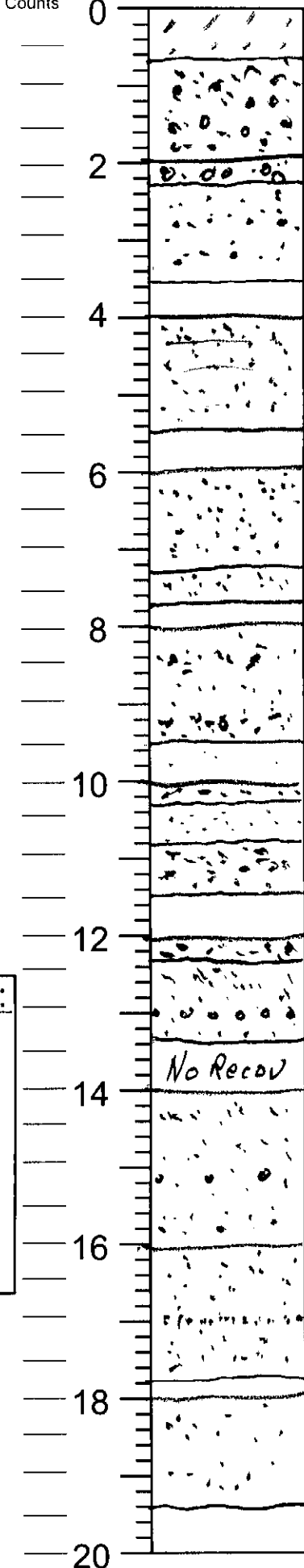
Date

8/27/08

Described by

KWP

Blow Counts  
Feet



Core Description

0 SILT, sdy, w/ lt ylsk brn 10YR 6/4, few gran

0.7 SAND, c-vc, poly, smt pl; gran abd ylsk brn 10YR 5/8

2.0 as above

2.3 SAND, m-c; loose; w/ vc-gran lam; lt ylsk brn - pale yl 2.5Y 7/3

1.5

4 SAND, c-m; loose, clean, sugary; vc cn; few gran; wh 2.5Y 8/1 faint txt lam

1.5

6 SAND, c-vc; loose, clean, sugary; gran cn; white

1.3 SAND, m-c; loose, wh; clean few vc-gran

1.7 not lot structure few gran-smt pl lam

8 SAND; interlam m-c + vc-c; gran in vc; white

1.5

10 as above

1.4 SAND, f-m; clean, sugary; wh-pale yl

1.8 SAND, vc-c; abd gran; wh-pale yl; loose

1.5

12 as above

1.3 SAND, f, f-m; abd; few gran lam pale yl

1.3

14 No Recov

SAND, f, vf cn-abd; scat gran lam ohm cn; few ohm lam; few f-m lam pale yl 2.5Y 7/4

16 SAND, f-vf; pale yl; w/ srted ohm 0-0.3; 1' f-m lam w/ trmic

1.8

18 as above; brnsh yl 10YR 6/8

1.4

20

Blow Counts Feet

### Core Description

DGSID

012539

LOCALID

Start Depth

30

Stop Depth

40

Coring Start Time

Coring Stop Time

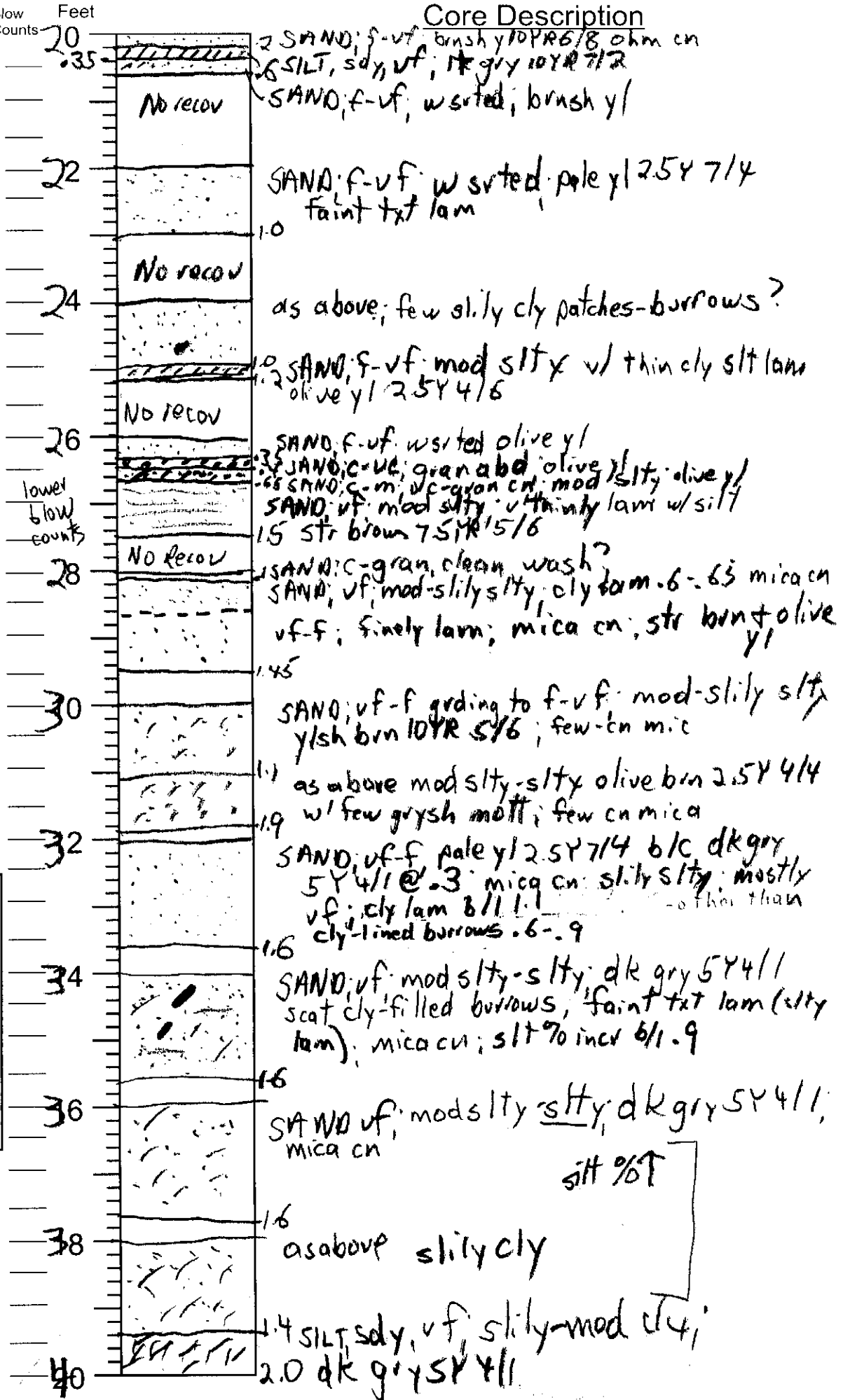
Drilling Notes:

Date

8/27/08

Described by

RWR



DGSID

012539

LOCALID

Start Depth

40

Stop Depth

60

Coring Start Time

Coring Stop Time

Drilling Notes:

Below 42'  
Described  
in lab

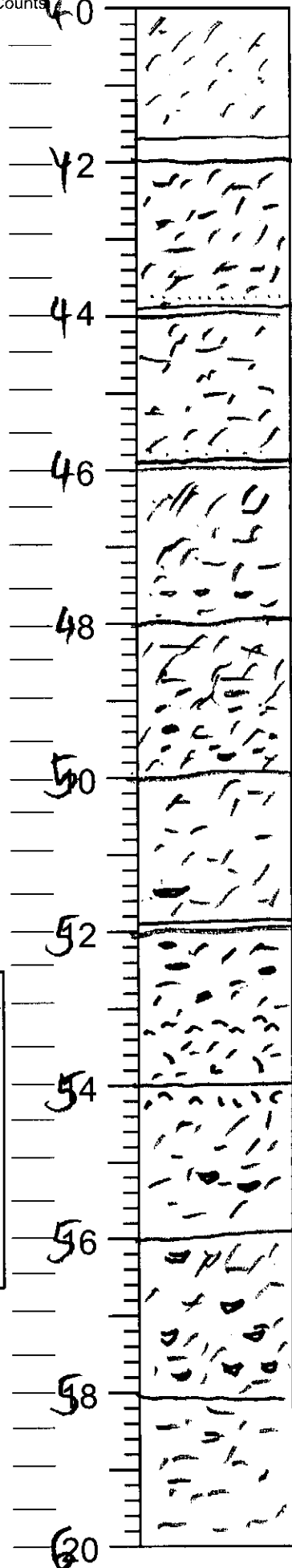
Date

8/27/08

Described by

KWR

Blow Counts  
Feet



Core Description

SILT, sdy; v f. mod clay; sticky.  
no discr. structures. dk grnsh gry  
1 GL<sub>2</sub> 5 GP 4/1 mica cn

SILT, clay to CLAY, silty. dk grnsh gry.  
few silt patches. b/1.7 few v thin wh  
silt-vf sd lam

as above. tr mica  
vf sd lam 1.8-1.9

as above; v thin silt-vf sd lenses 1.6-1.8

as above; silt patches .9-1.1, 1.32,  
1.5-1.72; wh lens sd -1.8.

as above wh sd lens 1.45-

as above wh sd lens .04, .4, .55, .72,

shl lam (Mulinia? 1.2-1.4)

shl frag to 2.0  
as above; Shl frag 54.15-54.3

wh sd lenses 1.25-1.25;  
tr vf sd

as above; wh sd lenses more on  
.25-.3, .65, .85-.9; 1.25-1.27  
1.65-1.8

as above, stickier, CLAY to SILT  
few sd lenses + SILT patches

60

2.0

DGSID

0:25-39

LOCALID

Start Depth

60

Stop Depth

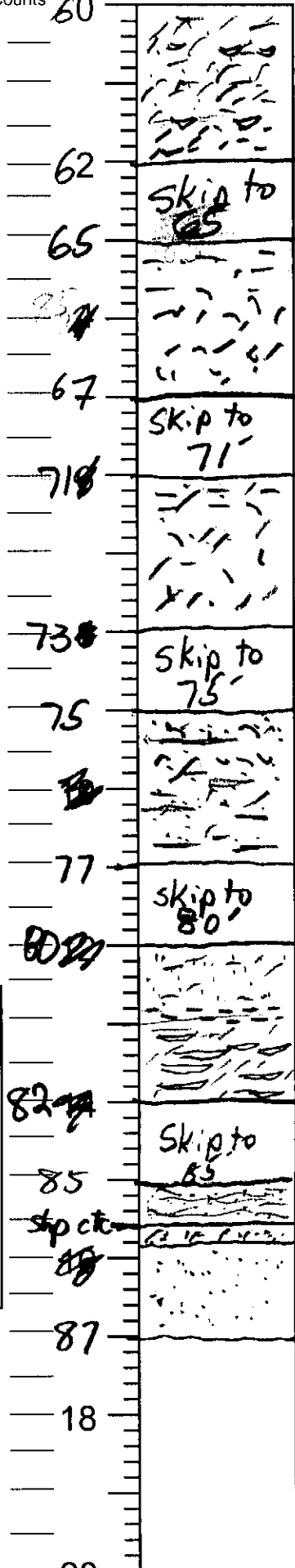
87

Coring Start Time

Coring Stop Time

Core Description

Blow Counts  
Feet



CLAY, slty to SILT, cly; dk grnsh grx  
 1 GLEY 56Y3/1 - slily sdy, vf to 1.5"  
 wh sd lenses .4-.6; 1.45-1.3 1.85-1.9

20  
 Skip to 65

SILT, cly to CLAY; slty dk grnsh grx  
 scat lenses wh sd; scat shell + shelly lam  
 .6-2.0; tr vf sd. Mulinia

20  
 Skip to 71

as above, scat shl + shly lam  
 shl cn .3-.5

20  
 Skip to 75

SAND; f-m cly, slty, inter lam w/ scat  
 clay, slty - lam disrupted - burrowed?  
 scat shl frag 0-0.8 dk grnsh gry

20  
 skip to 80

SAND; f; slty; slily-mod cly  
 dk grnsh gry; m cn .8-2.9  
 CLAY lam grnsh gry 1 GLEY 56Y5/1  
 w/ distinct lith change

20  
 Skip to 85

SILT, slily cly, v dk grysh brn 2.5Y3/3  
 inter lam w/ silt to fssd, lt gry-wh  
 lenticular bd;

20  
 skip to 87

SILT to SAND; vf dk grysh brn 2.5Y3/3  
 w/ v thin cly silt lam; abd mic

20  
 SAND; f. mod slty, compact; dk rdsh brn  
 5YR 3/2

SAND; f-m lt brnsh gry 2.5Y6/2  
 slily slty; abd phm

Drilling Notes:

Described in  
lab 8/29/08

Date

08/08/27

Described by

KWR