

Core Description

Blow Counts
Feet

DGSID

Oh 4/-08

LOCALID

FA1-2

Start Depth

0

Stop Depth

33.7

Coring Start Time

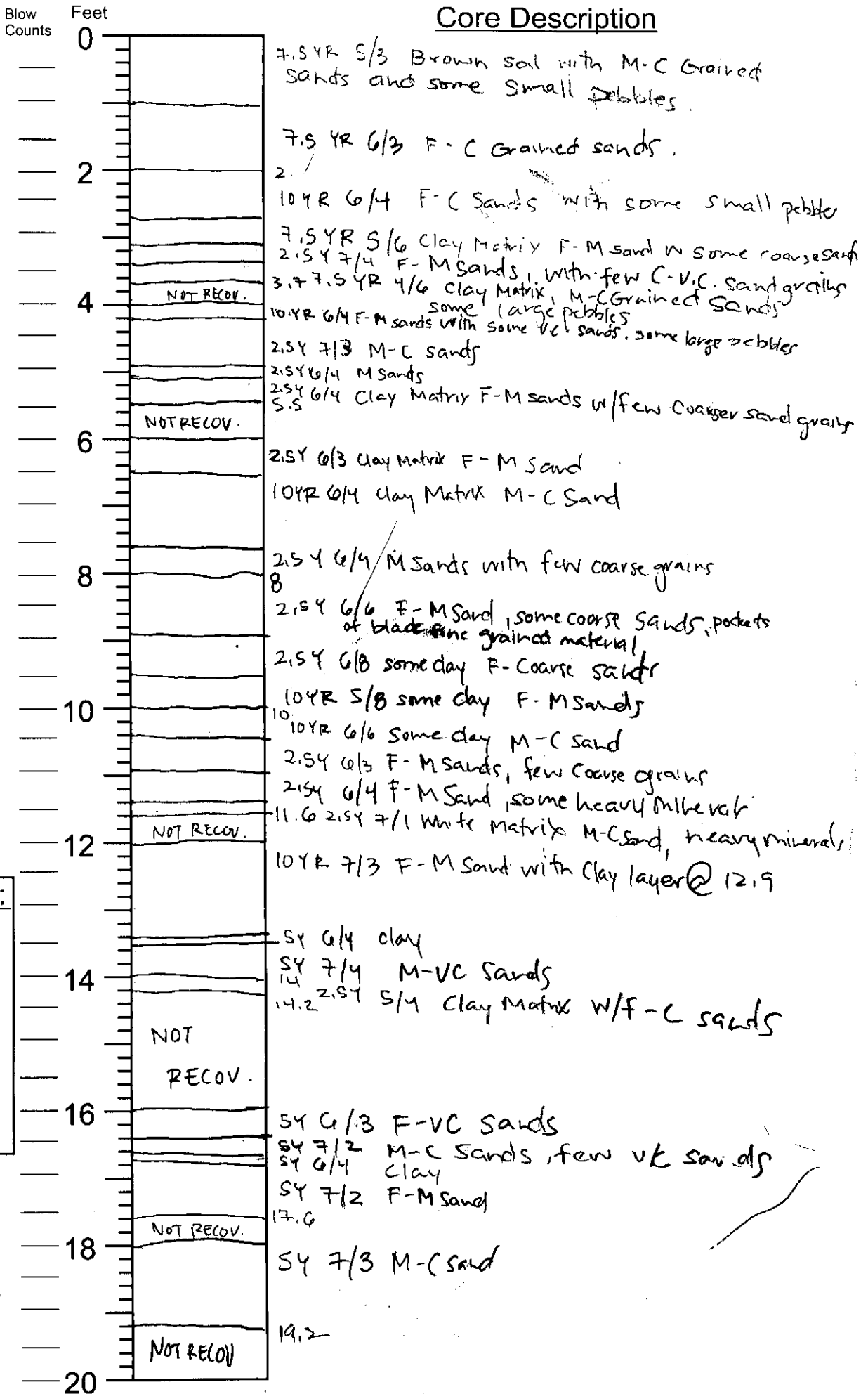
Coring Stop Time

Drilling Notes:

Date

9/5/07

Described by



Core Description

Blow Counts Feet

DGSID

Oh 41-08

LOCALID

FAI-2

Start Depth

0

Stop Depth

33.7

Coring Start Time

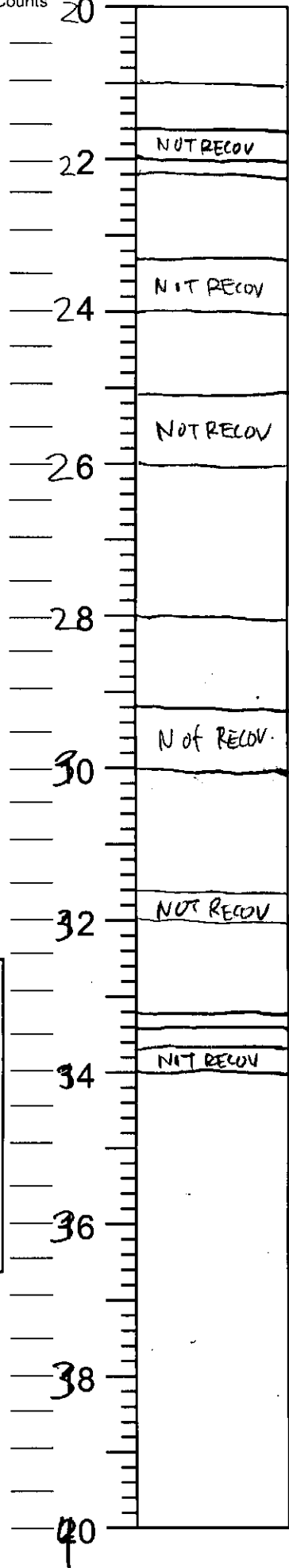
Coring Stop Time

Drilling Notes:

Date

9/5/07

Described by



SY 7/4 M-C Sands
 SY 8/1 M-C Sands
 NOT RECOV 21.6
 SY 7/4 M-C Sands
 SY 7/2 M-C Sands, few v.c. grains
 NOT RECOV 23.3
 SY 8/3 M-C sands, some v.c. grains heavy mineral layers
 NOT RECOV 25.1
 SY 8/2 M-C Sands few v.c. sands
 28
 SY 8/1 M-C Sands, some layers of yellow (SY 7/6) M-C sand
 NOT RECOV 29.2
 SY 8/2 Medium-Coarse sands, heavy mineral layers + layer of yellow (SY 7/8) Medium Sands @ 30.6 ft
 NOT RECOV 31.6
 SY 7/3 M-C Sand
 SY 6/4 Clay Matrix, some fine sand
 SY 7/2 F-M Sand
 NOT RECOV 33.7

40