

SAMPLES,
PHOTOS

DGS ID **0934-06**

NOTED BY
→

DEPTH
INTERVAL
ft

SYMBOL
DESCRIPTION

DESCRIPTION, COMMENTS

ADK

-4-6'

tight

- very wet by 25'

- rig bouncing
49-51'

74' rig bouncing

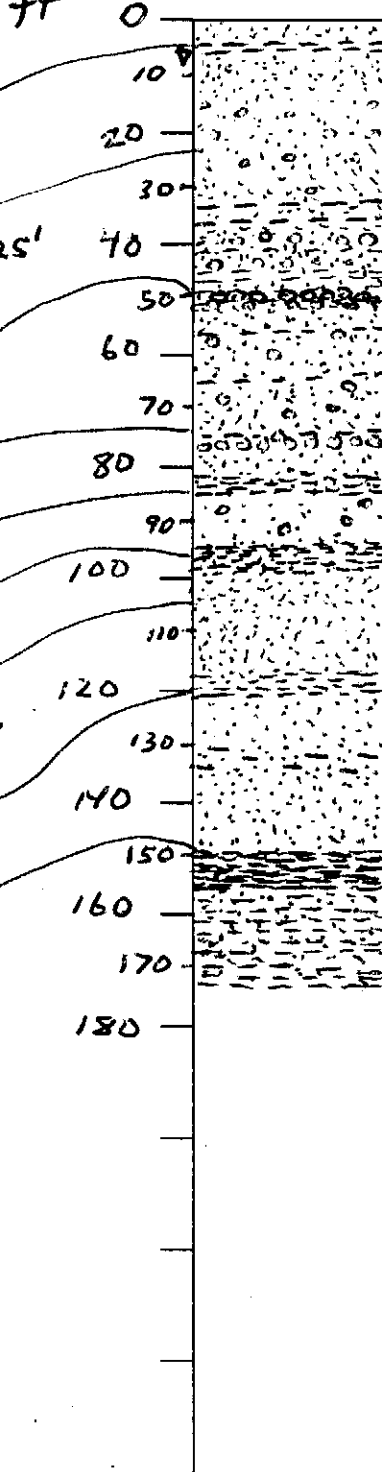
81-84' tight

94-99' tight

106' change in drilling
little tighter

120' tight

149-156'
very tight



0-5" topsoil
5"-2.5' tn f sd, lt cl (thin lams); ditch fill?
2.5-4' lt-dk gry f sd, wh-tn mottles, sm hvys
4-6' lt gry-wh f sd and clay
6-7' tn-lt gry f sd, lt-tr clay
7-9' or f sd, sm md, sm silt
9-13' lt or-tn f sd, few thin (<1") beds of md
sd, tr hvys, sm silt
13-31' yel f-md sd, trcs (multicolored), sm silt
31-36' wh-lt gry f-md sd, sm silt with thin
(3-6") f sdy clay beds
36-45' yel md-cs sd, sm silt, sm f gul, w/ thin
wh-lt gry 3-6" f sdy clay beds
45-51' lt gry-brn-yel f-md sdy sd w/ lt gry
brn clay, clay is gravelly @49-51'
51-74' lt dk gry-wh f-md sd, sm cs, sm f gul
w/ thin (3-6") gry sdy f sd, lt clay beds
74-76' f-md gul
76-106' lt yel-lt dk gry-wh f-md sd, s. is
(multicolored), tr f gul w/ interbedded
(3-5') gry f sdy, clay silt (tight spots)
106-149' dk gry f sd, well sorted, rounded,
streaks of wh-grn clay near 120'
(130-135' f sd is clayey)
149-156' dk gry clay, tr f sd
156-168' interbedded (1-2') dk gry clay and
lt yel-wh f-md sd, tr gul
168-173' finely laminated (few cm) dk gry
clayey f sd and f sdy clay

WATER-LEVEL DATA

Date **07-06-04**

Water Level **7.83**

Device Used

A	M	O	R	S	T	W
air line	m-scope	other	reported	static level	tape down	water-level recorder