

NJ 51-02  
 + 7.5'  
 (ONSHORE)

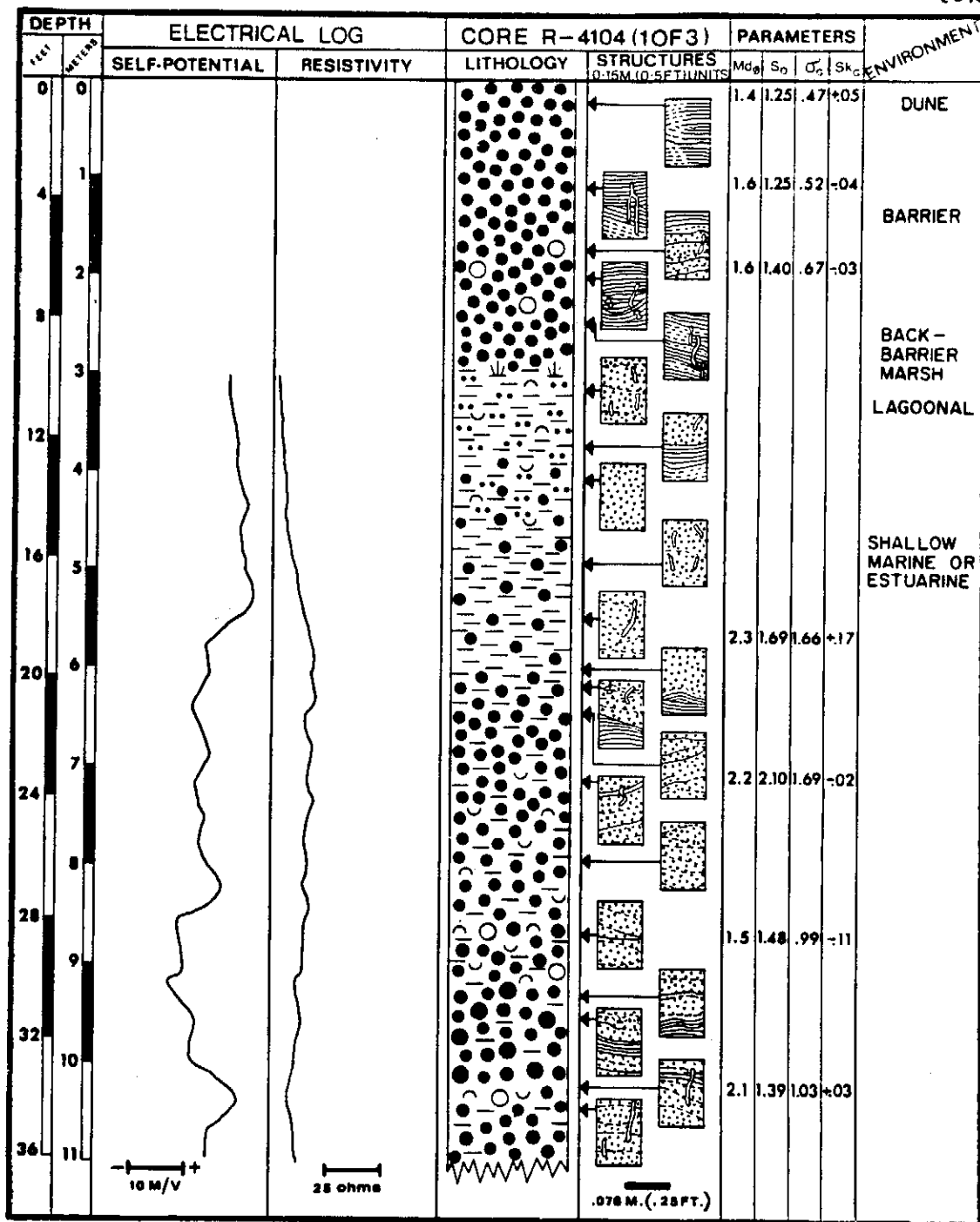


FIGURE 32. Geophysical, sedimentological, and sedimentary structure data for core R-4104. (cont.) →

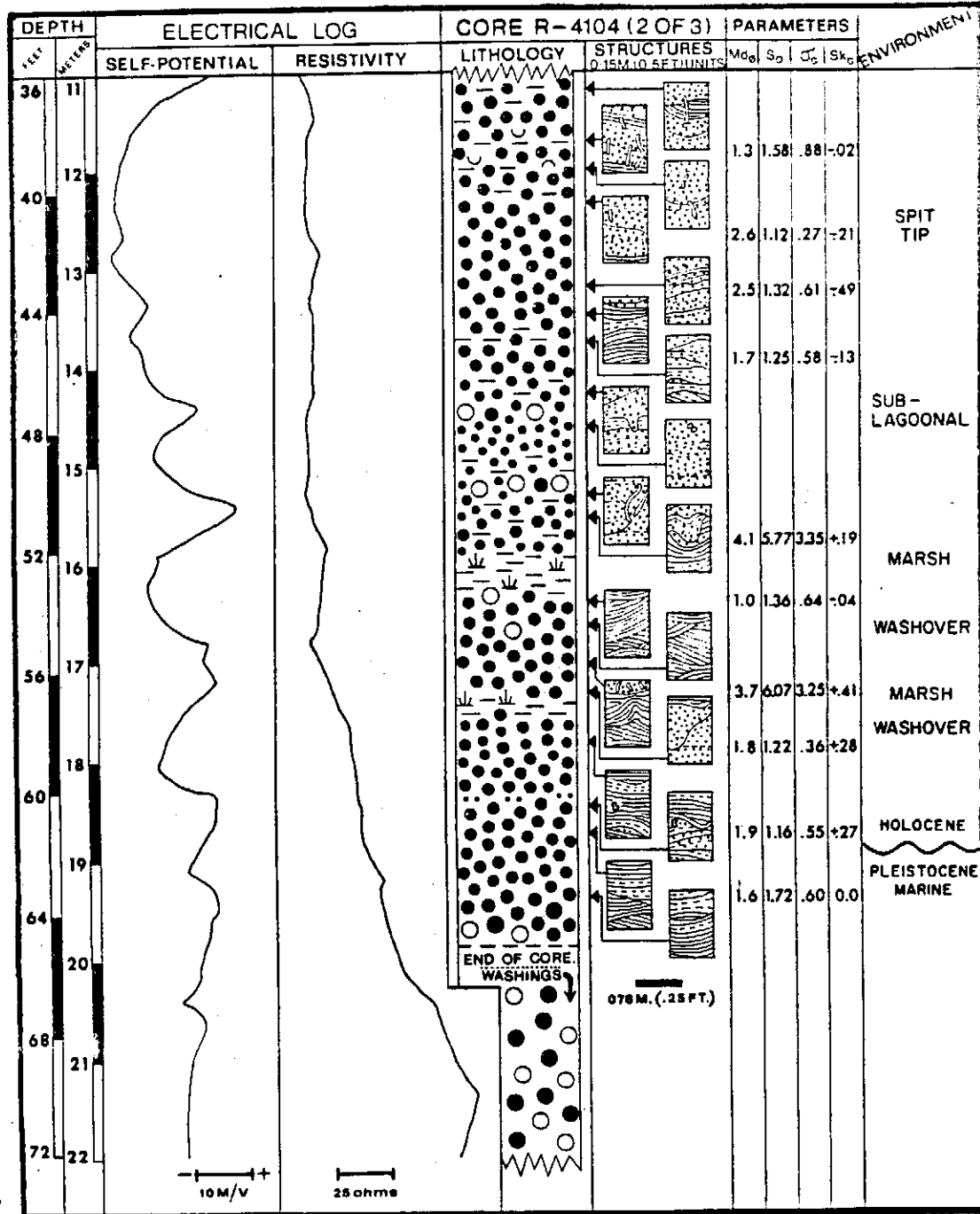


FIGURE 32 (cont.). Geophysical, sedimentological, and sedimentary structure data for core R-4104. (cont.)→

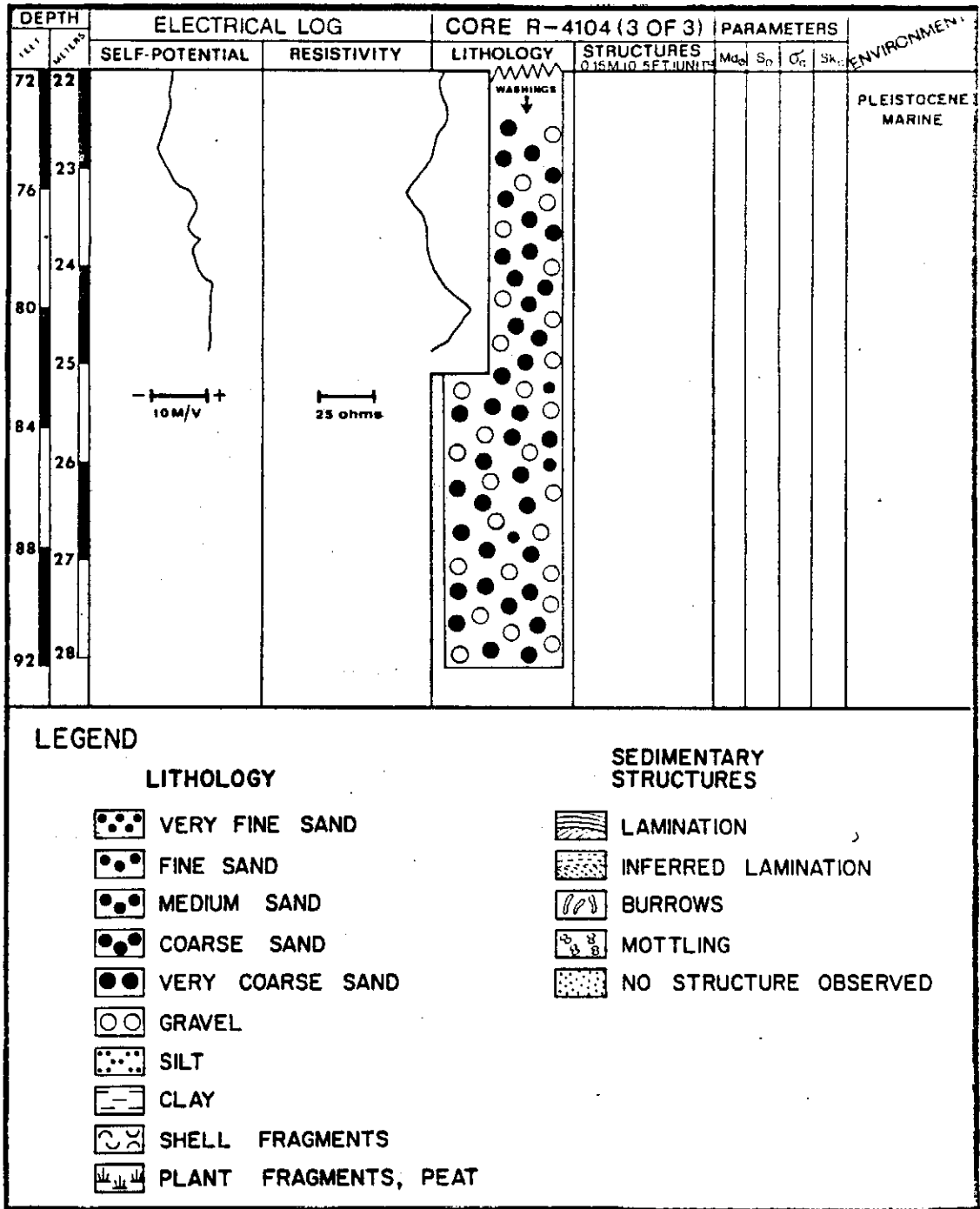


FIGURE 32 (cont.). Geophysical and sedimentological data for core R-4104.

NJ 51-2  
JOHN C. KRAFT

4104  
R 4004 (Hole 6)

Location on beach 10 feet west of high tide line north of Rehoboth Beach; 0.3 miles north of second tower; .65 miles south of Ft. Miles Reservation Boundary. Truck orient. mag. N.

- Core 1 (0-2 1/2 feet) Very well sorted, light brown, U. medium sand w/heavy min. layers (laminae).
- Core 2 (2 1/2-5 feet) Well sorted dark-light grey, L. medium sand w/abdt. heavies.
- Core 3 (5-7 1/2 feet) L-U medium light grey sand w/occ. pea size gravel.
- Core 4 (7 1/2-10 feet) U. part of core well sorted, light grey, L. medium U. fine sand. Peat assoc. w/dark grey clay at base - peat in place. (Carbon 14 sample #8).
- Core 5 (10-12 1/2 feet) Very dark grey silty clay w/occ. tiny shell fragments.
- Core 6 (12 1/2-15 feet) Very dark grey sandy, silty clay w/occ. shells (very small).
- Core 7 (15-17 1/2 feet) Dark grey clay medium sand in pockets (Bwrs?) sand included toward base.
- Core 8 (17 1/2-20 feet) L-U medium sand in pockets w/dark grey clay.
- Core 9 (20-22 1/2 feet) Clayey L. medium sand, very dark grey.
- Core 10 (22 1/2-25 feet) Clayey L-U medium sand shells (Bornia) becoming more abndt. toward base.
- Core 11 (25-27 1/2 feet) Same as above.
- Core 12 (27 1/2-30 feet) 6" sandy clay. U. medium-L. coarse clayey sand w/Bornia and occ. pea size pebbles, dry grey. (C-14 sample #9).
- Core 13 (30-32 1/2 feet) U. coarse-L. medium slightly clayey sand grading down into L. medium clayey sand w/small clay streaks.
- Core 14 (32 1/3-35 feet) U. coarse-L. medium clayey sand w/loose shell bed in middle. Pea size gravel associated w/shell bed. Lower feet dark grey sandy clay.

- Core 15 (35-37 1/2 feet)
- Core 16 (37 1/2-40 feet) Interbedded sand and clay w/sandy clay at base, scattered shells (gast.)
- Core 17 (40-42 1/2 feet) L. medium grey sand.
- Core 18 (42 1/2-45 feet) L. medium grey sand w/thin sandy clay beds at base.
- Core 19 (45-47 1/2 feet) Medium grnd. sand at top w/pea gravel at base overlying U. fine grnd. sand w/clay.
- Core 20 (47 1/2-50 feet) Very fine grnd. sand grading down into clay sand finally into coarse sand and pea gravel.
- Core 21 (50-52 1/2 feet) Sandy clay at top (8") base very stiff brown-grey peaty clay.
- Core 22 (52 1/2-55 feet) 2" at top. Same as above w/pebbles associated w/clay. U. medium sand grading to L. medium sand at base.
- Core 23 Medium sand at base (C-14 sample #10)
- Core 24 Peat grey sandy clay, very stiff.
- Core 25 (57 1/2-60 feet) Grey medium-fine grnd sand.
- Core 26 (60-62 1/2 feet) L. medium grey sand w/two very thin silt layers at top.
- Core 27 (62 1/2-65 feet) Medium sand at top grading down into L-U coarse w/pea gravel, grey at top-yellow brown at base.

Hit gravel between 65-67 1/2 feet. Couldn't core, washed down to 90 feet in gravel and v. v. coarse sand. Logged and abandoned hole. Broke through gravel TD-92 feet. Caved to 83 feet - at 88 feet into fine sand.

88  
4.  
83