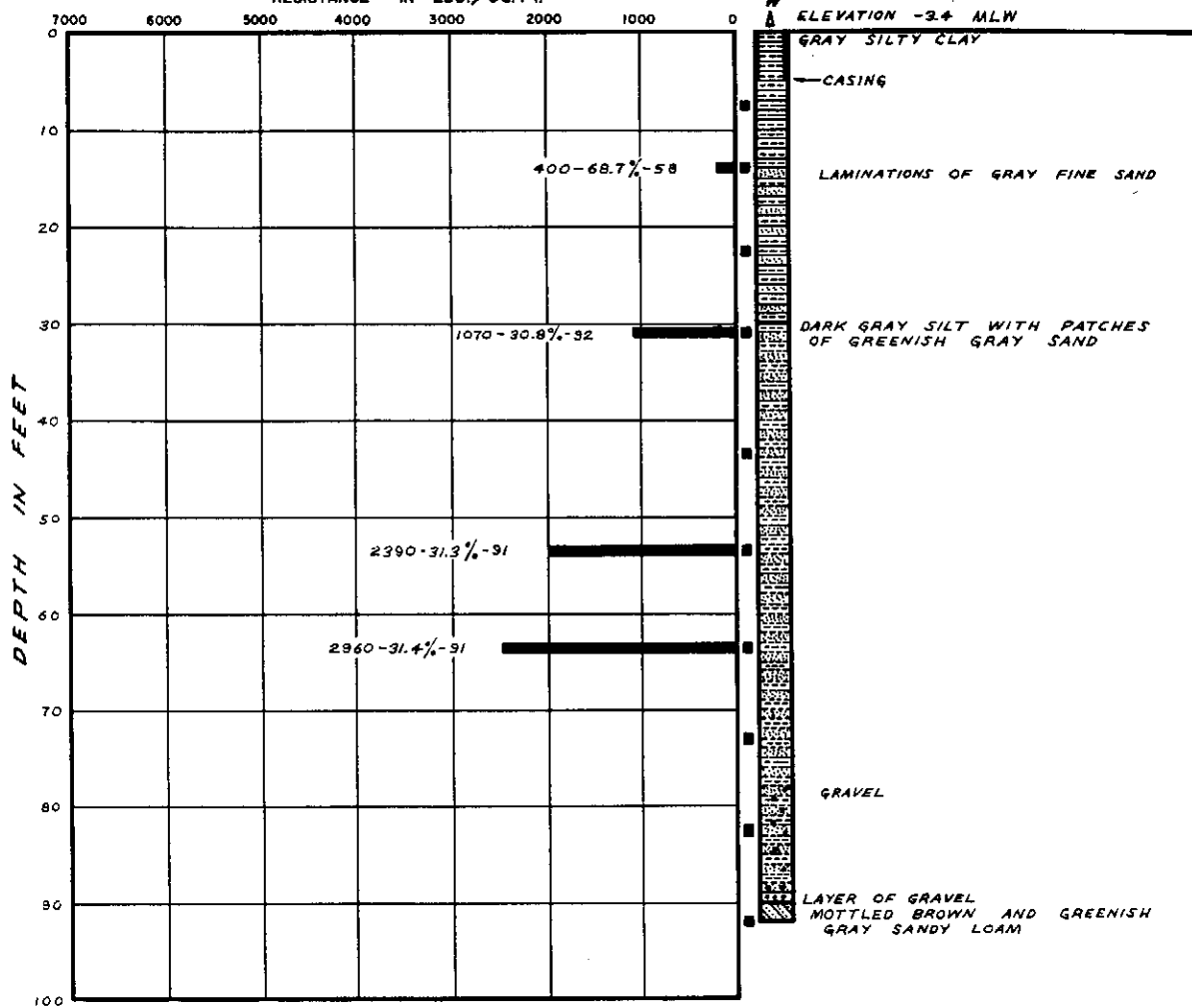


EC15-23

BORING 55 N 576,670 E 450,140

SHEARING STRENGTH AND FRICTIONAL RESISTANCE IN LBS./SQ. FT.



REVISIONS
 BY _____ DATE _____ TO GO _____
 BY _____ DATE _____ TO GO _____
 PLATE _____ OF _____ PLATES _____

FILE 163-AA
 BY _____ DATE _____
 CHECKED BY _____ TO GO _____
 APPROVED BY OFFICE ENGINEER _____

LOG OF BORINGS

DAMES & MOORE, *Civil Engineers*
 FOUNDATION INVESTIGATIONS • SOIL MECHANICS ENGINEERING

PLATE A-1-AK