



MWH Americas, Inc.
335 Phoenixville Pike
Malvern, Pennsylvania 19355

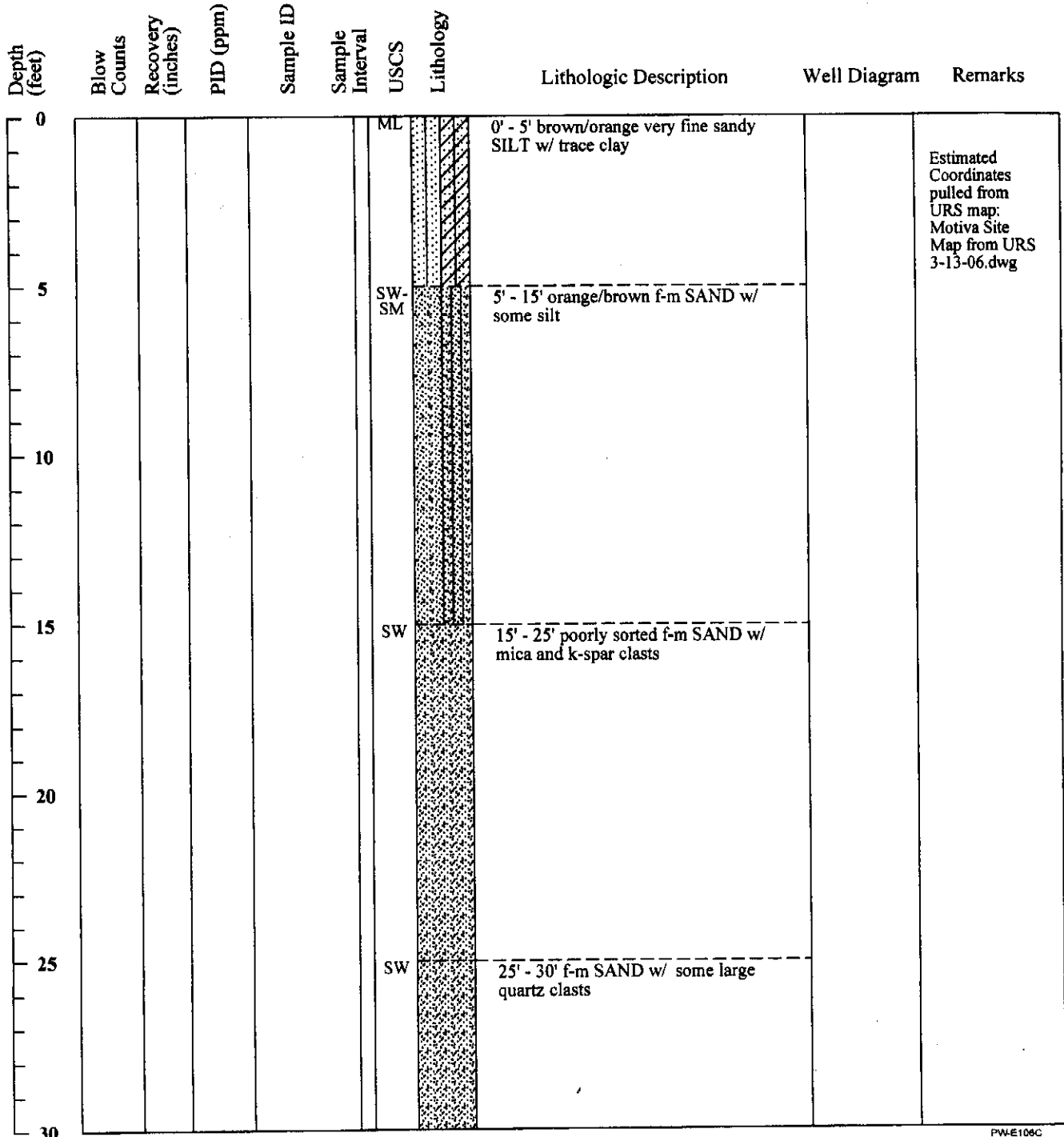
Boring ID: PW-E106C

Ec13-48

Page 1 of 4

Project Name: from URS gINT database
urs_excel_3_19_06.gpj
Location: Delaware City, DE
Project Number:
Date Started: 01/09/2006
Date Finished: 1/11/2006
Drilling Method: Mud Rotary
Sampling Method:
State Permit Number: NA

Boring Location: South of Tank 1 Crude Tank Farm
Drilling Company: B. L. Myers Bros. (Paul Flynn)
Ground Elevation (ft/msl): 40.4
Total Depth (ft): 130.3'
Boring Diameter (in): 4.875"
Water Level During Drilling (ft/bgs):
Weather Conditions:
Logged By: Nick Garner





EC13-40

Depth (feet)	Blow Counts	Recovery (inches)	PID (ppm)	Sample ID	Sample Interval	USCS	Lithology	Lithologic Description	Well Diagram	Remarks
30						SW		30' - 45' f-m SAND w/ some coarse quartz clasts		
35										
40										
45						SW		45' - 55' fine black and white SAND w/ some medium quartz and k-spar clasts		
50										
55						SW		55' - 60' f-c black and white SAND		
60						SW		60' - 70' f-m white SAND w/ some black sand		
65										



Depth (feet)	Blow Counts	Recovery (inches)	PID (ppm)	Sample ID	Sample Interval	USCS	Lithology	Lithologic Description	Well Diagram	Remarks
70						SW		70' - 75' f-m poorly sorted SAND w/ mica clasts		
75					SW	75' - 90' m-c poorly sorted subangular SAND and GRAVEL				
80										
85										
90						SW		90' - 95' f-m light poorly sorted SAND w/ some subangular gravel		
95						SW	95' - 100' f-m light poorly sorted SAND w/ some subangular gravel + mica and k-spar clast			
100						SP	100' - 105' medium SAND w/ mica clast			

EC13-46



MWH Americas, Inc.
335 Phoenixville Pike
Malvern, Pennsylvania 19355

Boring ID: PW-E106C

Page 4 of 4

Depth (feet)	Blow Counts	Recovery (inches)	PID (ppm)	Sample ID	Sample Interval	USCS	Lithology	Lithologic Description	Well Diagram	Remarks
105						SW		105' - 110' medium SAND w/ mica clast and medium angular quartz gravel		
110					GW	110' - 112' quartz, k-spar and mica angular f-m GRAVEL				
					SW	112' - 115' poorly sorted f-c SAND w/ some fine subrounded gravel				
115					SW	115' - 120' orange/brown medium angular SAND w/ trace fine gravel				
120					SP	120' - 125' orange/brown medium SAND w/ trace silt and fine angular gravel				
125					SW	125' - 130' orange/brown medium gravely f-m SAND				
130				130'		SP		130' - 130.25' fine white well sorted SAND		
135										

Qc1

130'

Kpt