



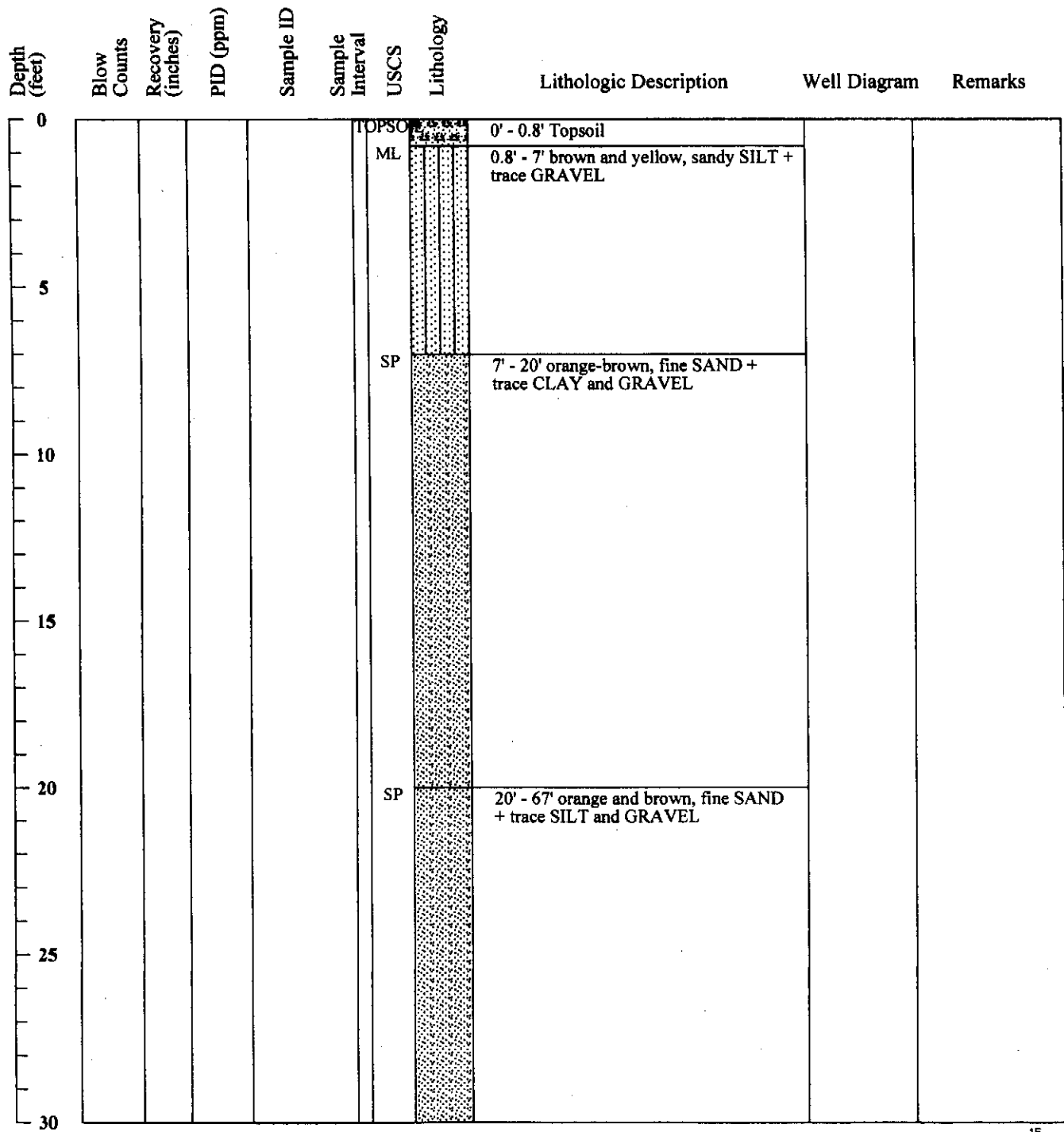
MWH Americas, Inc.
335 Phoenixville Pike
Malvern, Pennsylvania 19355

Boring ID: 1E

Page 1 of 3

EC 13-52

Project Name: from URS gINT database urs_excel_3_19_06.gpj	Boring Location: Delaware City Refinery
Location: Delaware City, DE	Drilling Company: Walton Corporation (Gary Truver Sr.)
Project Number:	Ground Elevation (ft/msl): 58.7
Date Started: 10/29/2002	Total Depth (ft): 74.0'
Date Finished: 10/29/2002	Boring Diameter (in): "
Drilling Method: Hollow Stem Auger	Water Level During Drilling (ft/bgs): Not Measured
Sampling Method:	Weather Conditions:
State Permit Number: NA	Logged By: Vince Piazza





Depth (feet)	Blow Counts	Recovery (inches)	PID (ppm)	Sample ID	Sample Interval	USCS	Lithology	Lithologic Description	Well Diagram	Remarks
30										
35										
40										
45										
50										
55										
60										
65										



MWH

MWH Americas, Inc.
335 Phoenixville Pike
Malvern, Pennsylvania 19355

Boring ID: 1E

Page 3 of 3

Depth (feet)	Blow Counts	Recovery (inches)	PID (ppm)	Sample ID	Sample Interval	USCS	Lithology	Lithologic Description	Well Diagram	Remarks
70				Qu		SP		67' - 72.7' orange and brown, fine SAND + trace SILT and GRAVEL		
72.7						CL		72.7' - 74' orange silty CLAY + trace SAND		
75				km						
80										
85										
90										
95										
100										