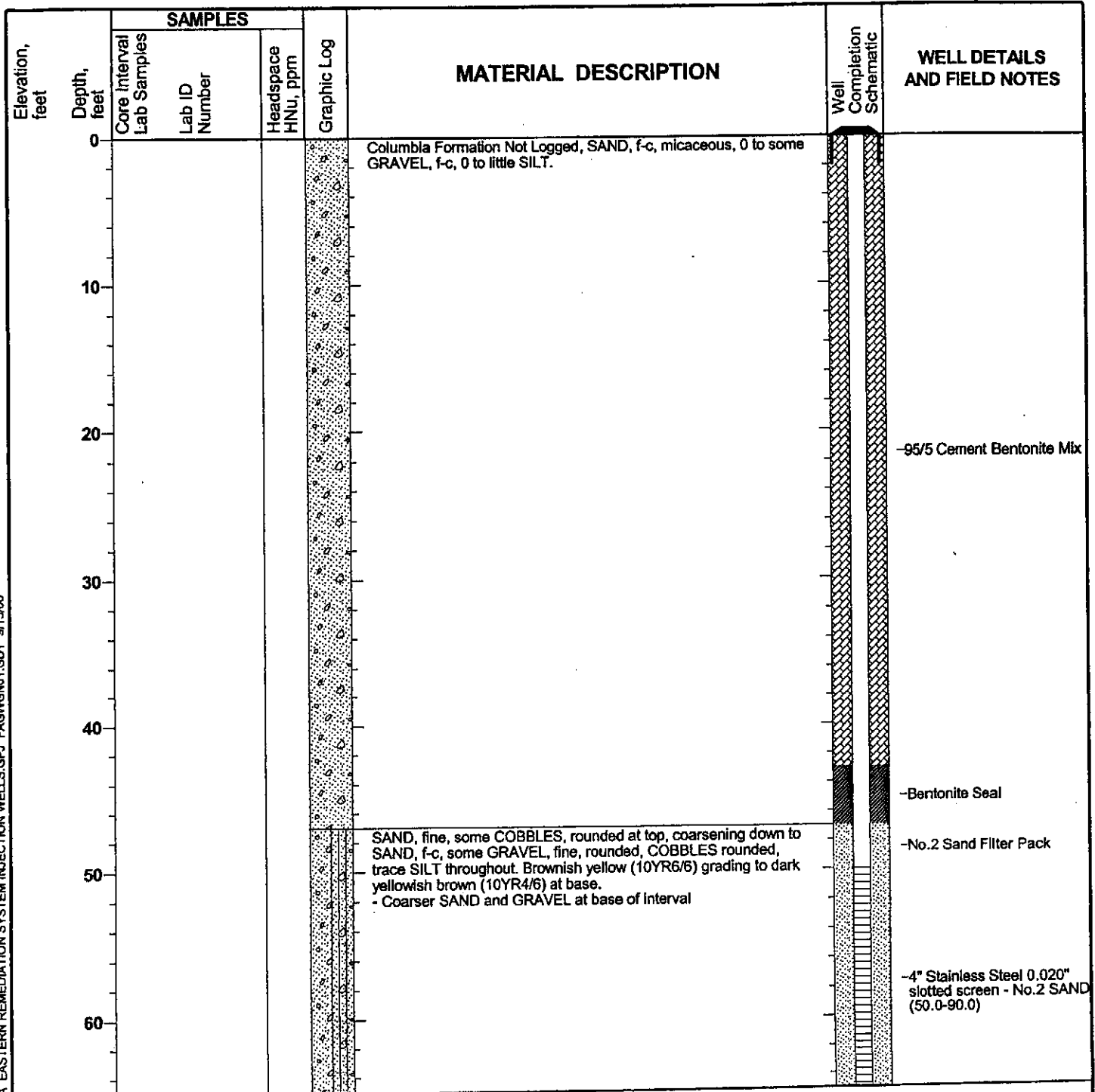


Project: DCR Eastern Remediation System
 Project Location: Delaware City Refinery, Delaware City, DE
 Project Number: 20240412.W1000

Log of Oxygen Injection Well IW-E101

EC13-49 Sheet 1 of 3

Date(s) Drilled	6/19/2006	Logged By	Bruce Cushing	Checked By	Mike Shadle
Drilling Method	Roto Sonic Drilling	Drill Bit Size/Type	NA	Total Depth of Borehole	145.0 feet
Drill Rig Type	Roto Sonic	Drilling Contractor	ProSonic Drilling	Surface Elevation	
Groundwater Level(s)		Sampling Method(s)	Core Barrel	Top of Casing Elevation	
Location	DCR, Delaware City, DE	Borehole Completion	NA		

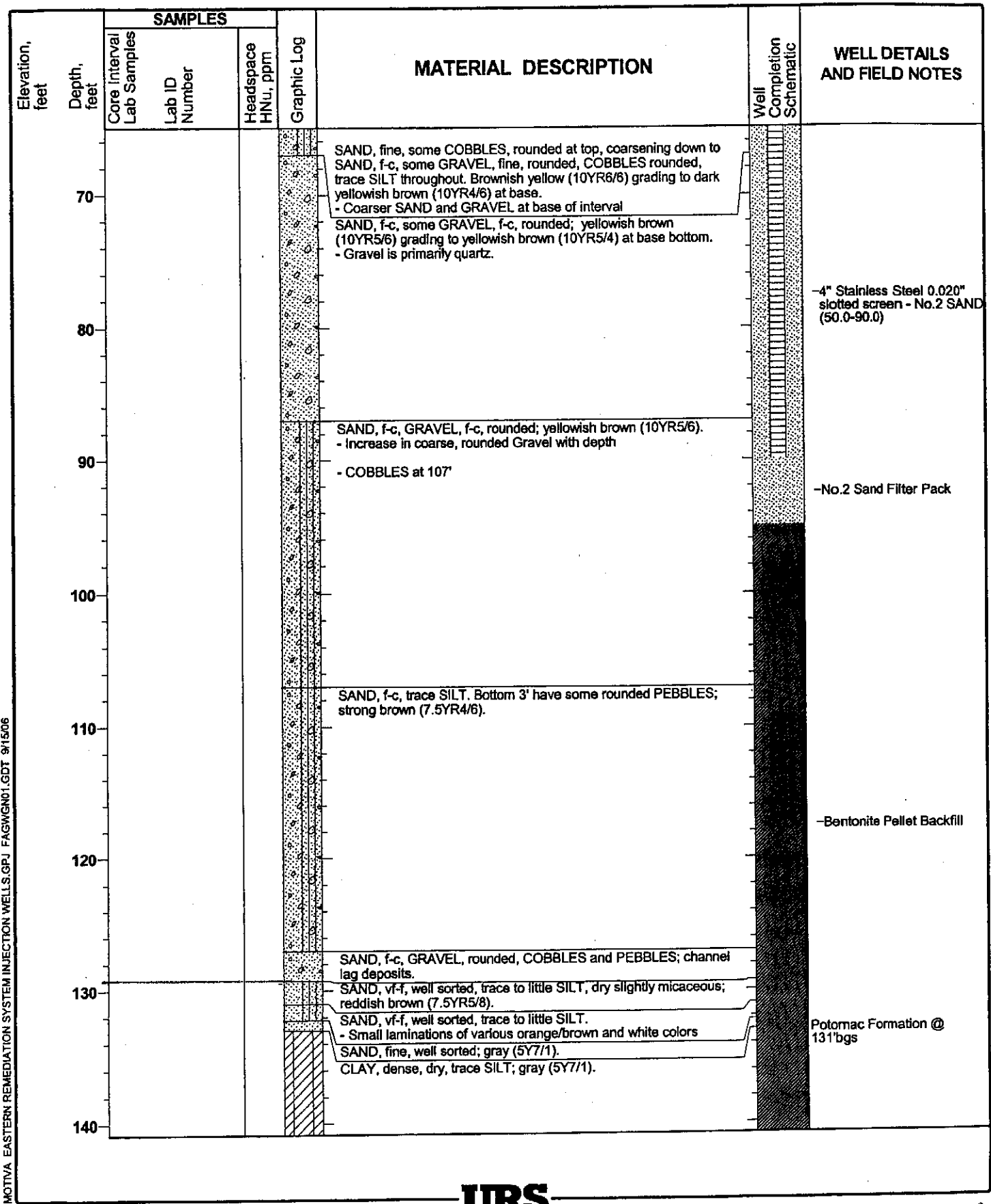


MOTIVA EASTERN REMEDIATION SYSTEM INJECTION WELLS.GPJ FAGWGN01.GDT 9/15/06

Project: DCR Eastern Remediation System
 Project Location: Delaware City Refinery, Delaware City, DE
 Project Number: 20240412.W1000

Log of Oxygen Injection Well IW-E101

EC 13-49 Sheet 2 of 3



MOTVA EASTERN REMEDIATION SYSTEM INJECTION WELLS.GPJ FAGWGN01.GDT 9/15/06

Project: DCR Eastern Remediation System
 Project Location: Delaware City Refinery, Delaware City, DE
 Project Number: 20240412.W1000

Log of Oxygen Injection Well IW-E101

ECB-49 Sheet 3 of 3

Elevation, feet	Depth, feet	SAMPLES			Graphic Log	MATERIAL DESCRIPTION	Well Completion Schematic	WELL DETAILS AND FIELD NOTES
		Core Interval Lab Samples	Lab ID Number	Headspace HNu, ppm				
						SAND, very fine, well sorted, moist, some SILT; gray (5Y7/1).		-Bentonite Pellet Backfill
						CLAY, dense, dry, trace SILT; gray (5Y7/1).		-Heave
						SAND, fine, some SILT; gray (5Y7/1).		
						CLAY and SILT, some SAND; gray (5Y7/1).		
						End of boring log at 145' bgs.		
150								
160								
170								
180								
190								
200								
210								

MOTIVA EASTERN REMEDIATION SYSTEM INJECTION WELLS.GPJ FAGWGN01.GDT 9/15/06