



MWH Americas, Inc.
335 Phoenixville Pike
Malvern, Pennsylvania 19355

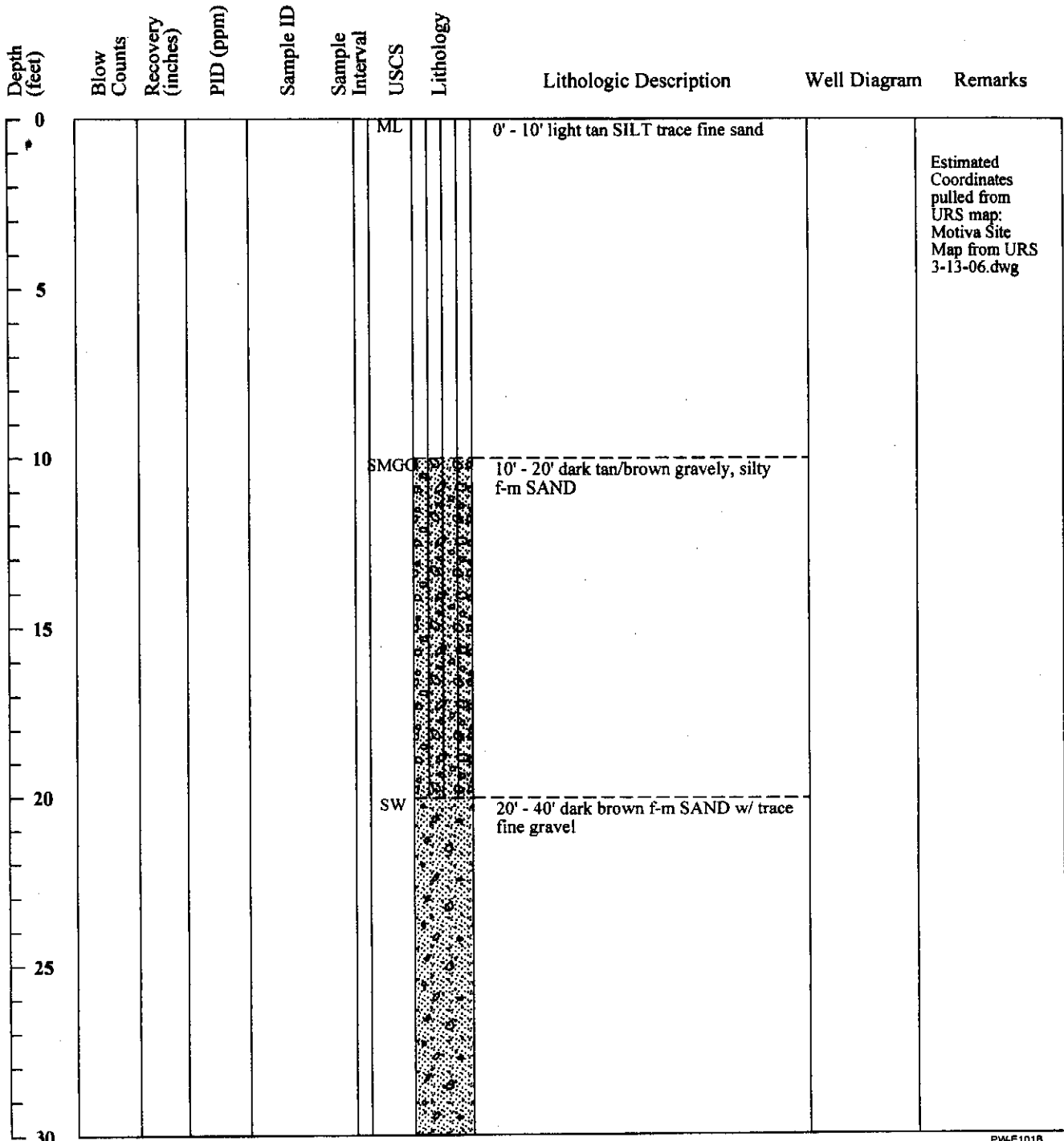
Boring ID: PW-E101B

EC13-43
Fc13-43

Page 1 of 3

Project Name: from URS gINT database
urs_excel_3_19_06.gpj
Location: Delaware City, DE
Project Number:
Date Started: 12/13/2005
Date Finished: 12/21/2005
Drilling Method: Mud Rotary
Sampling Method:
State Permit Number: NA

Boring Location: S. Dragon Run Rd S. Tank 9
Drilling Company: B. L. Myers Bros. (Paul Flynn)
Ground Elevation (ft/msl): 57.6
Total Depth (ft): 81.0'
Boring Diameter (in): 4.875"
Water Level During Drilling (ft/bgs):
Weather Conditions:
Logged By: Nick Garner



Depth (feet)	Blow Counts	Recovery (inches)	PID (ppm)	Sample ID	Sample Interval	USCS	Lithology	Lithologic Description	Well Diagram	Remarks
30										
35										
40						SM/SC		40' - 45' dark brown clayey silty SAND		
45						SM/SC		45' - 55' dark brown wet clayey silty SAND		
50										
55						SW		55' - 60' orange/ brown wet f-m SAND		
60						SW		60' - 65' poorly sorted subangular m-c SAND (more light than dark)		
65						SW		65' - 70' poorly sorted f-m SAND w/		



MWH

MWH Americas, Inc.
335 Phoenixville Pike
Malvern, Pennsylvania 19355

Boring ID: PW-E101B

Page 3 of 3

EC1343

Depth (feet)	Blow Counts	Recovery (inches)	PID (ppm)	Sample ID	Sample Interval	USCS	Lithology	Lithologic Description	Well Diagram	Remarks
70							trace coarse mica flecks			
70 - 74						SW	70' - 74' orange/red/brown gravely m-c oxidized SAND			
74 - 76						SW	74' - 76' (MWH) Oxidized orange-brown medium to coarse sand, trace silt, little subangular/subrounded large pebbles and gravel (quartz, etched chert)			
76 - 77						SW	76' - 77' orange/red/brown gravely m-c oxidized SAND			
77 - 81						CL	77' - 81' dark gray silty micaceous CLAY, (MWH) Merchantville			
80										
85										
90										
95										
100										