

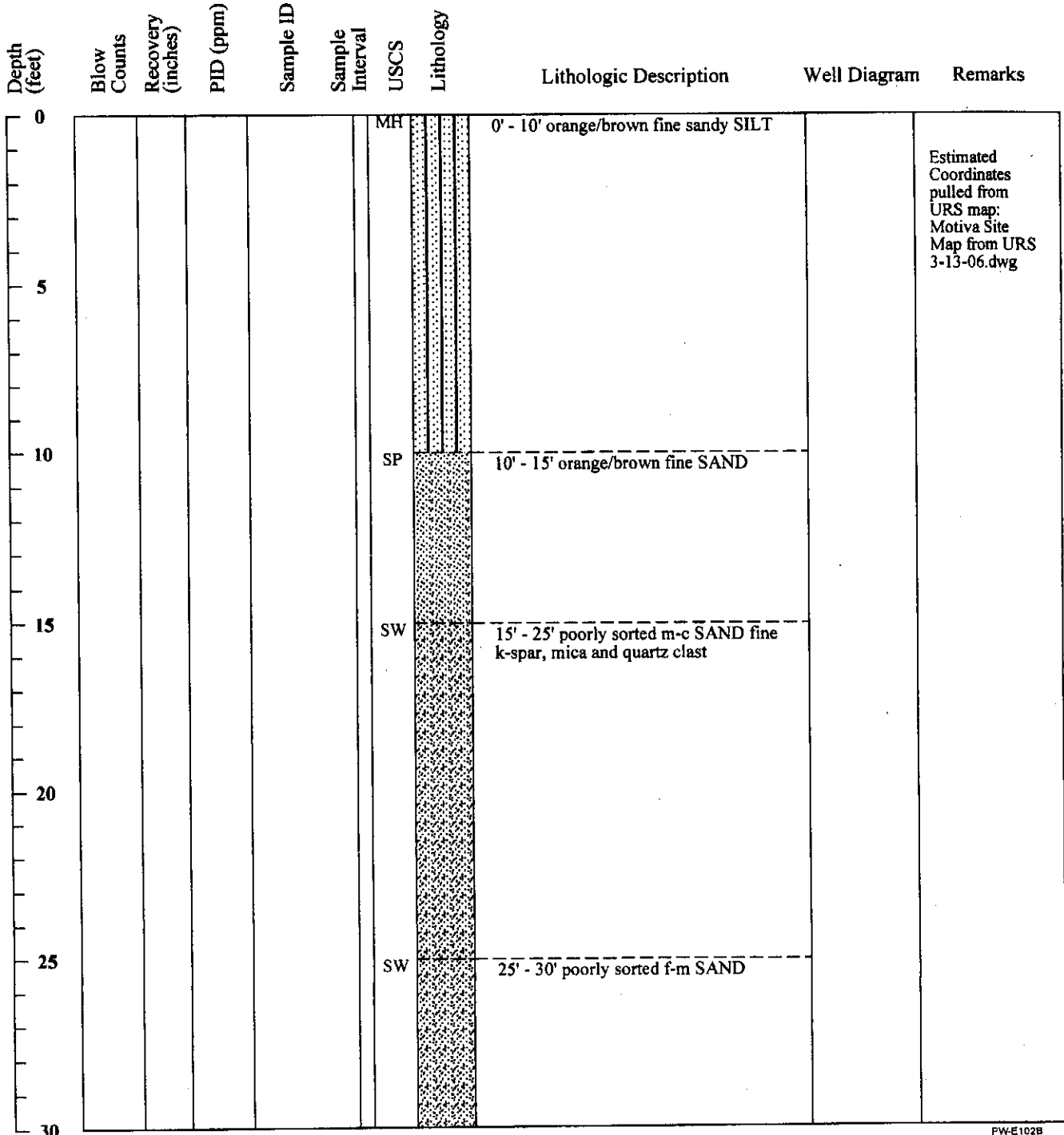
ECL 13-41



MWH Americas, Inc.
335 Phoenixville Pike
Malvern, Pennsylvania 19355

Boring ID: PW-E102B *ECL 13-41*
Page 1 of 3

Project Name: from URS gINT database urs_excel_3_19_06.gpj	Boring Location: South of Tank 9 Crude Tank Farm
Location: Delaware City, DE	Drilling Company: B. L. Myers Bros. (Paul Flynn)
Project Number:	Ground Elevation (ft/msl): 57.4
Date Started: 01/16/2006	Total Depth (ft): 76.0'
Date Finished: 1/17/2006	Boring Diameter (in): 4.875"
Drilling Method: Mud Rotary	Water Level During Drilling (ft/bgs):
Sampling Method:	Weather Conditions:
State Permit Number: NA	Logged By: Nick Garner






Depth (feet)	Blow Counts	Recovery (inches)	PID (ppm)	Sample ID	Sample Interval	USCS	Lithology	Lithologic Description	Well Diagram	Remarks
30						SW		30' - 35' poorly sorted f-c dark and light SAND w/ trace silt		
35						ML		35' - 40' fine GRAVEL and fine sandy SILT		
40						ML		40' - 45' fine gravely sandy SILT		
45						SW-SM		45' - 50' f-c light and dark SAND and SILT		
50						SP		50' - 55' orange/brown fine SAND w/ trace silt and fine gravel		
55						SW		55' - 60' moderately sorted orange/brown f-m SAND		
60						SW		60' - 65' orange/tan f-c moderately sorted angular SAND		
65						SW		65' - 74' brown f-m angular SAND some		



EC13-41

Depth (feet)	Blow Counts	Recovery (inches)	PID (ppm)	Sample ID	Sample Interval	USCS	Lithology	Lithologic Description	Well Diagram	Remarks
70								staining and odor		
75						CH		74' - 76' dark gray micaceous silty CLAY		
80										
85										
90										
95										
100										