

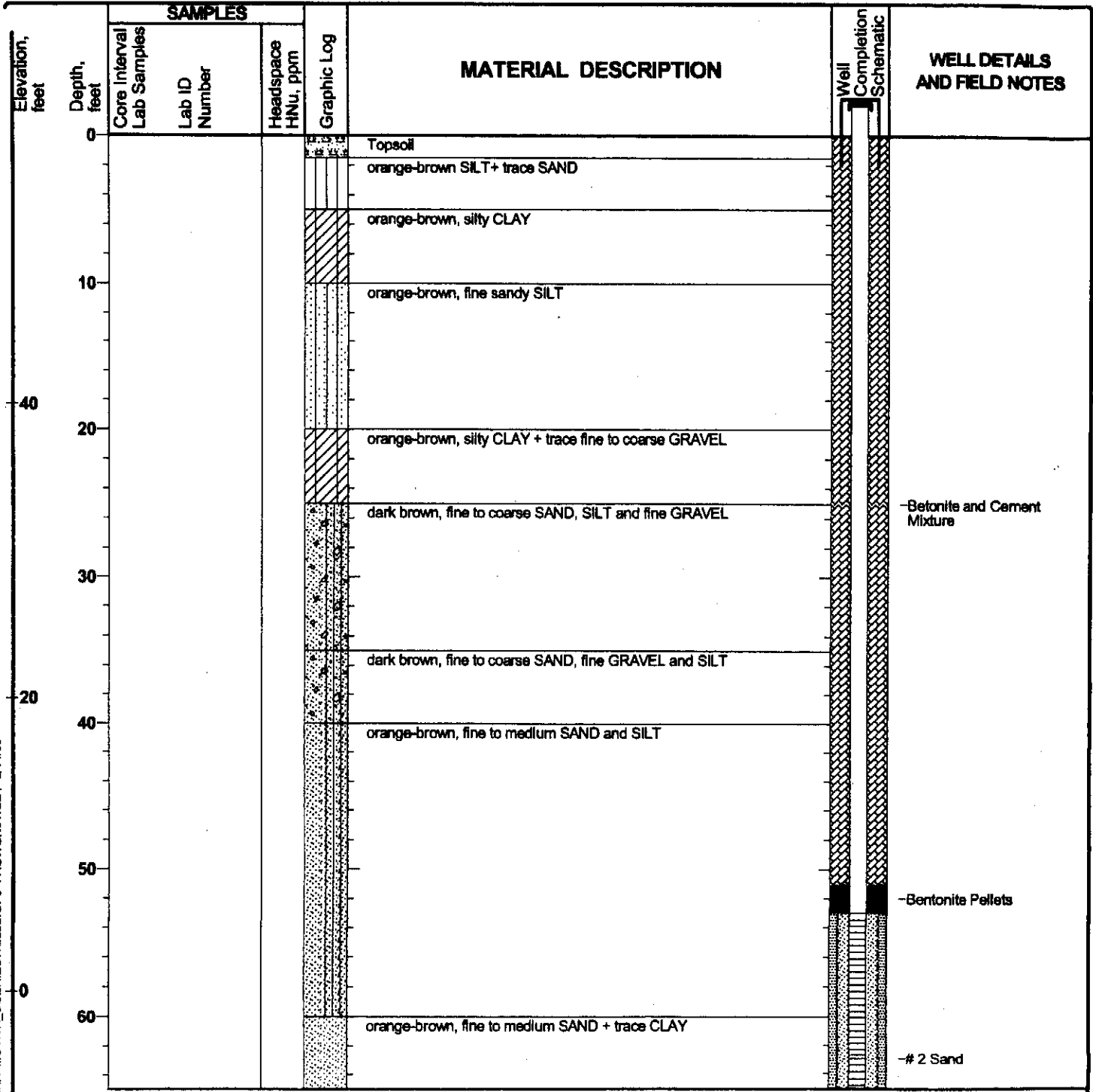
Project: Dissolved Phase Plume Investigation
 Project Location: Delaware City Refinery
 Project Number: 20240412.W1000

ECB-108

Log of D29

Sheet 1 of 2

Date(s) Drilled	8/09/2004	Logged By	Vince Piazza and Mike Miller	Checked By	
Drilling Method		Drill Bit Size/Type		Total Depth of Borehole	74.0 feet
Drill Rig Type		Drilling Contractor	Walton Corporation	Surface Elevation	58.30
Groundwater Level(s)	Not Measured	Sampling Method(s)		Top of Casing Elevation	60.91
Location	Delaware City Refinery	Borehole Completion	Cement & Bentonite Mix		



ATOFINA_MOTIVA_DSERIESWELLS.GPJ FAGWGN01.GDT 3/14/06

