



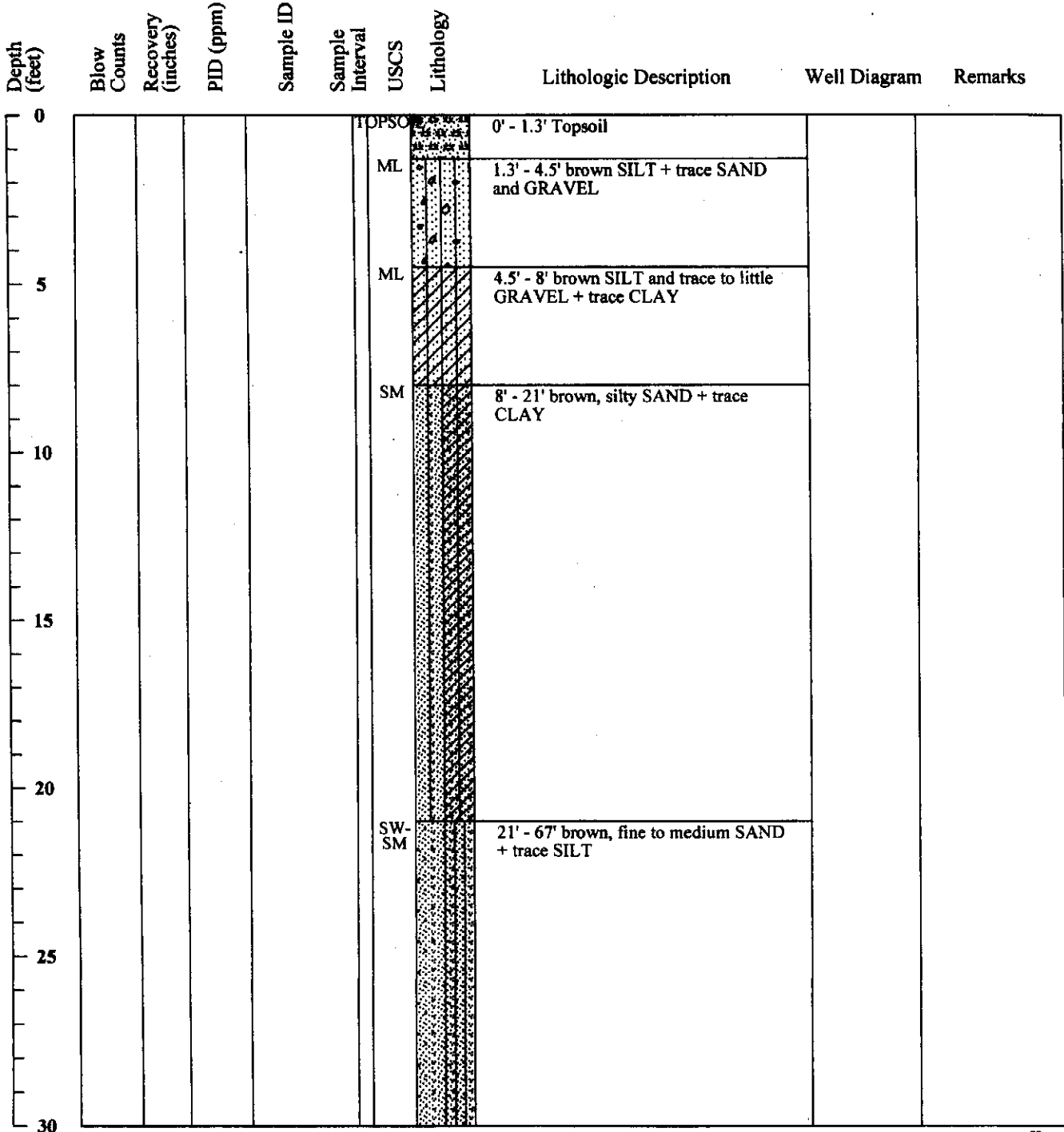
MWH Americas, Inc.
335 Phoenixville Pike
Malvern, Pennsylvania 19355

Boring ID: 7B

ECB-100

Page 1 of 4

Project Name: from URS gINT database urs_excel_3_19_06.gpj Location: Delaware City, DE Project Number: Date Started: 10/11/2004 Date Finished: 10/11/2004 Drilling Method: Sampling Method: State Permit Number: NA	Boring Location: Delaware City Refinery Drilling Company: Walton Corporation (Gary Truver Sr.) Ground Elevation (ft/msl): 10.6 Total Depth (ft): 104.0' Boring Diameter (in): " Water Level During Drilling (ft/bgs): Not Measured Weather Conditions: Logged By: Vince Piazza
---	---





Depth (feet)	Blow Counts	Recovery (inches)	PID (ppm)	Sample ID	Sample Interval	USCS	Lithology	Lithologic Description	Well Diagram	Remarks
30										
35										
40										
45										
50										
55										
60										
65										



Depth (feet)	Blow Counts	Recovery (inches)	PID (ppm)	Sample ID	Sample Interval	USCS	Lithology	Lithologic Description	Well Diagram	Remarks
70						SW-SM		67' - 101' brown, fine to medium SAND + trace SILT		
75										
80										
85										
90										
95										
100						SW-SM		101' - 103' brown, fine to coarse SAND		



MWH

MWH Americas, Inc.
335 Phoenixville Pike
Malvern, Pennsylvania 19355

Boring ID: 7B

Page 4 of 4

Depth (feet)	Blow Counts	Recovery (inches)	PID (ppm)	Sample ID	Sample Interval	USCS	Lithology	Lithologic Description	Well Diagram	Remarks
				Qc1						
				103		CL		and fine to coarse GRAVEL + trace SILT		
105				K _g +				103' - 104' pink and gray, stiff CLAY + trace very fine SAND and SILT		
110										
115										
120										
125										
130										
135										