

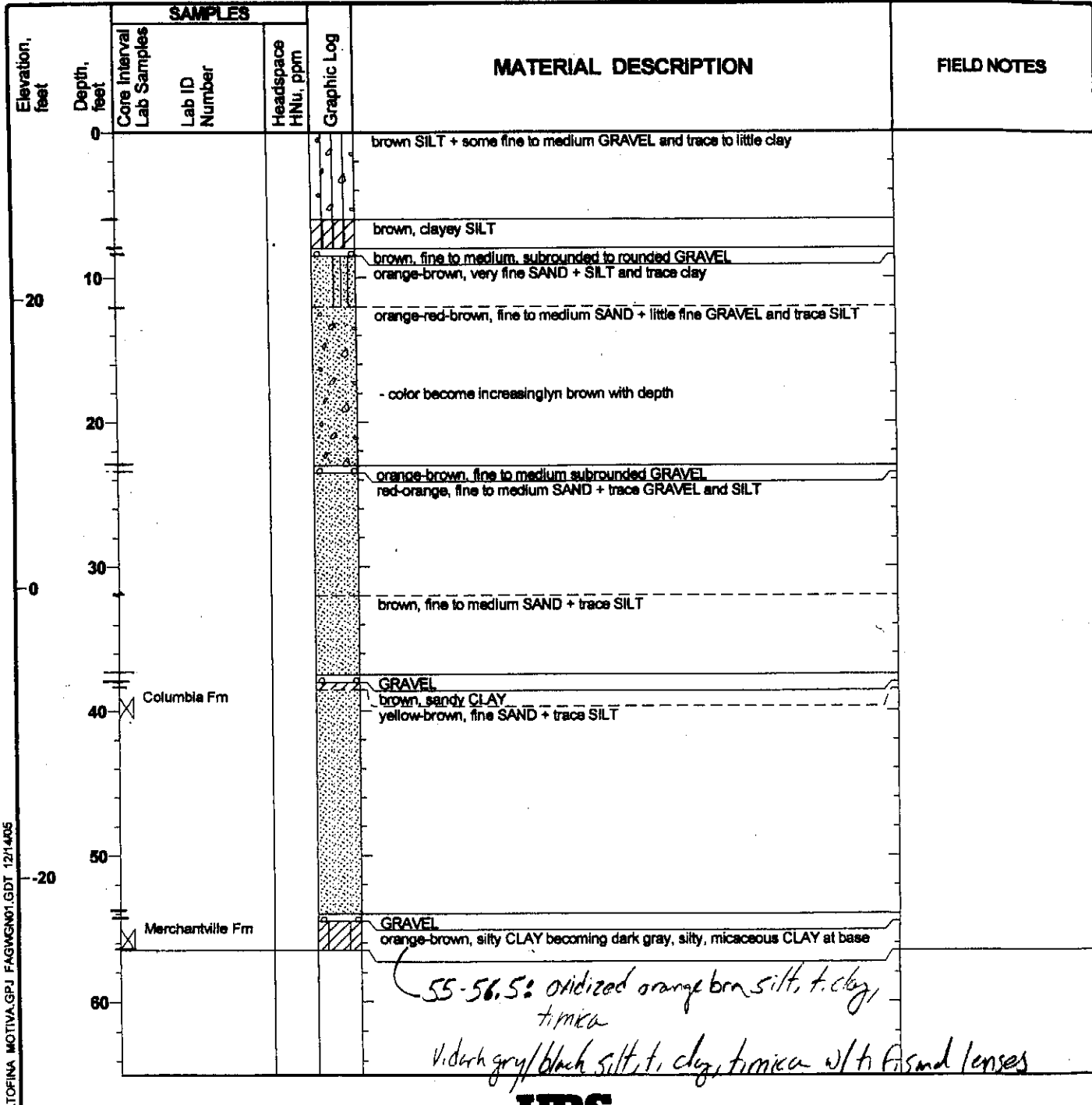
F

EC12-50

EC1350

Project: Motiva - Dissolved Phase Plume Investigation	Log of GWSB 8C
Project Location: Delaware City, Delaware	Sheet 1 of 1
Project Number: 20240412.wr1000	

Date(s) Drilled: 10/14/2008	Logged By: S.J. Zahniser	Checked By:
Drilling Method: Hollow Stem Auger	Drill Bit Size/Type:	Total Depth of Borehole: 58.5 feet
Drill Rig Type:	Drilling Contractor: Walton Corporation	Surface Elevation: 31.48
Groundwater Level(s): Not Measured	Sampling Method(s):	Hammer Data:
Location: Delaware City Refinery - Soy Field	Borehole Completion: Cement & Bentonite Mix	



ATOFINA MOTIVA.GPJ FAGWGN01.GDT 12/14/05

