

Dc54-31

Dc54-32

DEPTH
IN
FEET

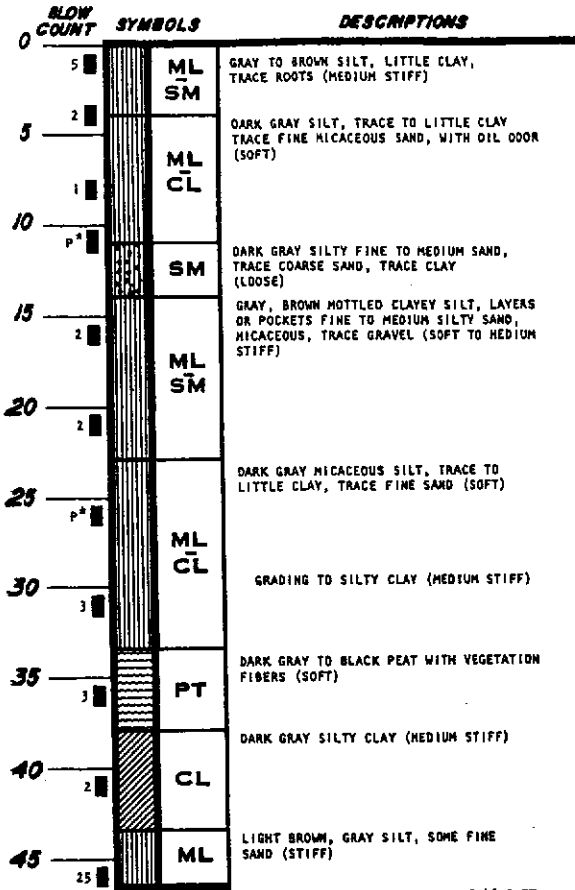
BORING 2-1

SURFACE ELEVATION 21.5 (±) FEET
LOCATION: STATION 0+050

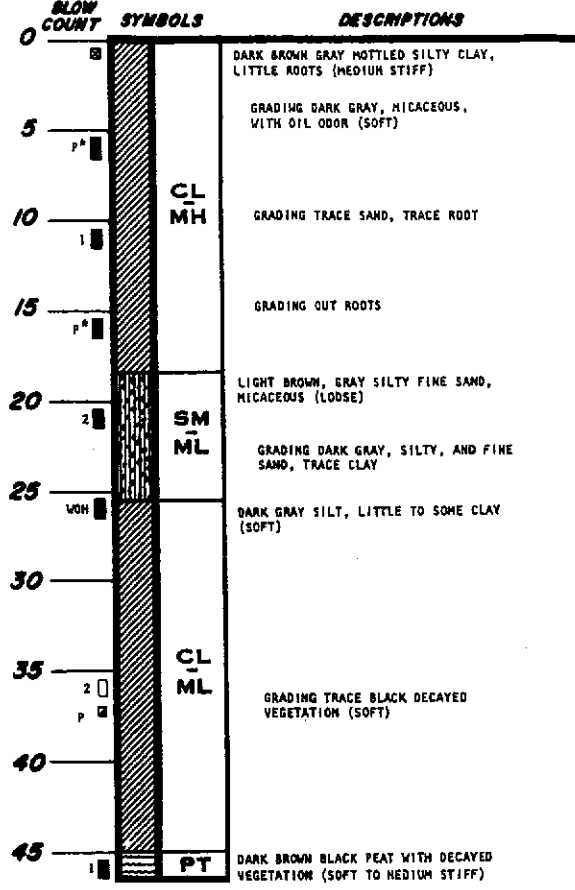
DEPTH
IN
FEET

BORING 2-2

SURFACE ELEVATION 20 (±) FEET
LOCATION: STATION 0+300



BORING COMPLETED AT A DEPTH OF 46.5 FT ON 9/19/78
40 FT OF 4 INCH CASING USED
15 FT OF 1 1/2 INCH PVC PIPE INSTALLED
WATER LEVEL RECORDED AT DEPTH OF 3.20 FT ON 9/22/78



BORING COMPLETED AT A DEPTH OF 46.5 FT ON 9/20/78
40 FT OF 4 INCH CASING USED
15 FT OF 1 1/2 INCH PVC PIPE INSTALLED
WATER LEVEL RECORDED AT DEPTH OF 2.48 FT ON 9/22/78

LOG OF BORINGS

NOTES:

(1) THE FIGURES IN THE COLUMN LAELED "BLOW COUNT" REFER TO THE NUMBER OF BLOWS REQUIRED TO DRIVE THE DAMES & MOORE SOIL SAMPLER A DISTANCE OF ONE FOOT USING A 300 POUND HAMMER FALLING 24 INCHES.

THE DAMES & MOORE SAMPLER IS 3 1/2" O.D. AND APPROXIMATELY 2 1/2" I.D. THE STANDARD SPLIT-SPOON SAMPLER IS 2" O.D. AND 1-3/8" I.D. THE SHELBY TUBE THIN-WALL SAMPLER IS APPROXIMATELY 3" O.D. AND 2-7/8" I.D.

THE LETTER "P" IN THE "BLOW COUNT" COLUMN INDICATES THAT THE SAMPLER WAS ADVANCED BY COMPRESSED AIR WITHOUT DRIVING.

THE LETTERS "WOM" IN THE "BLOW COUNT" COLUMN INDICATE THAT THE SAMPLER WAS ADVANCED BY THE WEIGHT OF THE DRILL ROD AND DRIVE WEIGHT WITHOUT DRIVING.

(2) ELEVATIONS REFER TO USC & GS MEAN SEA LEVEL DATUM.

(3) THE DISCUSSION IN THE TEXT OF THE REPORT IS NECESSARY FOR A PROPER UNDERSTANDING OF THE NATURE OF THE SUBSURFACE MATERIALS.

(4) BORING LOCATIONS REFER TO THE APPROXIMATE STATION ALONG THE CENTER LINE OF THE PROPOSED DIKE (SEE PLATE 2, PLOT PLAN).

KEY TO SAMPLE SYMBOLS:

- DAMES & MOORE SAMPLE
- * SHELBY TUBE THIN-WALL SAMPLE
- DISTURBED BULK SAMPLE
- STANDARD SPLIT-SPOON SAMPLE
- SAMPLING ATTEMPT WITH NO RECOVERY