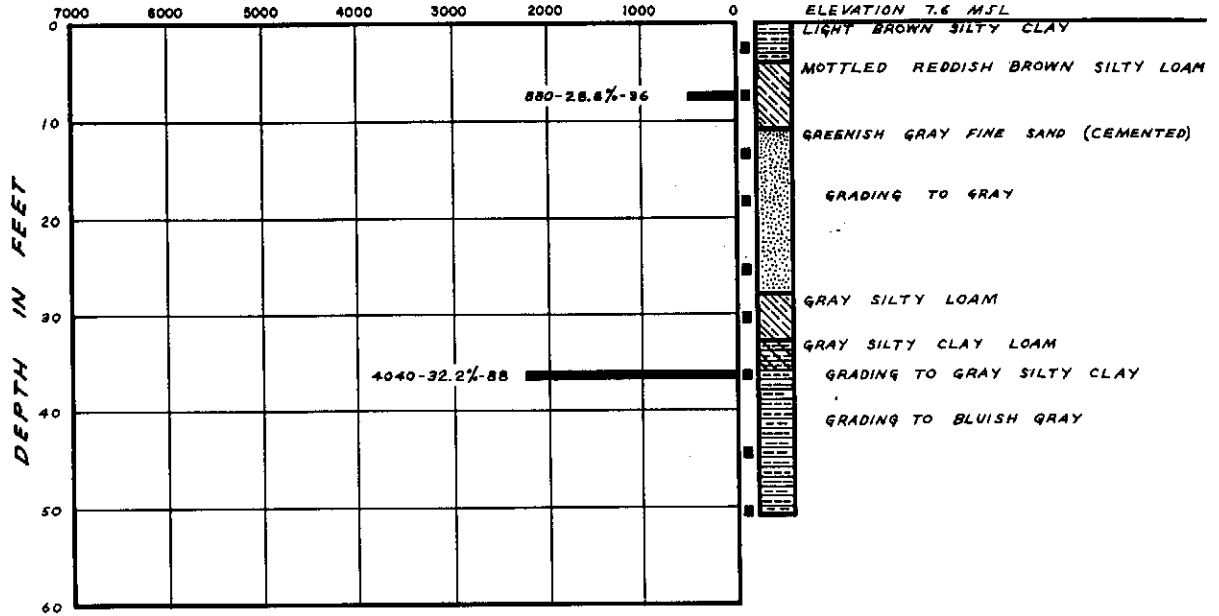


Dc54-10

BORING II N 577120  
E 444970

SHEARING STRENGTH AND FRICTIONAL  
RESISTANCE IN LBS./SQ. FT.



REVISIONS  
BY \_\_\_\_\_ DATE \_\_\_\_\_ TO GO  
BY \_\_\_\_\_ DATE \_\_\_\_\_ TO GO  
PLATE \_\_\_\_\_ OF \_\_\_\_\_ PLATES

FILE 163-AA  
BY RS DATE \_\_\_\_\_ TO GO  
CHECKED BY \_\_\_\_\_ DATE \_\_\_\_\_ TO GO  
APPROVED BY OFFICE ENGINEER \_\_\_\_\_

LOG OF BORINGS

DAMES & MOORE, *Civil Engineer*  
FOUNDATION INVESTIGATIONS • SOIL MECHANICS ENGINEERING

PLATE A-1-J