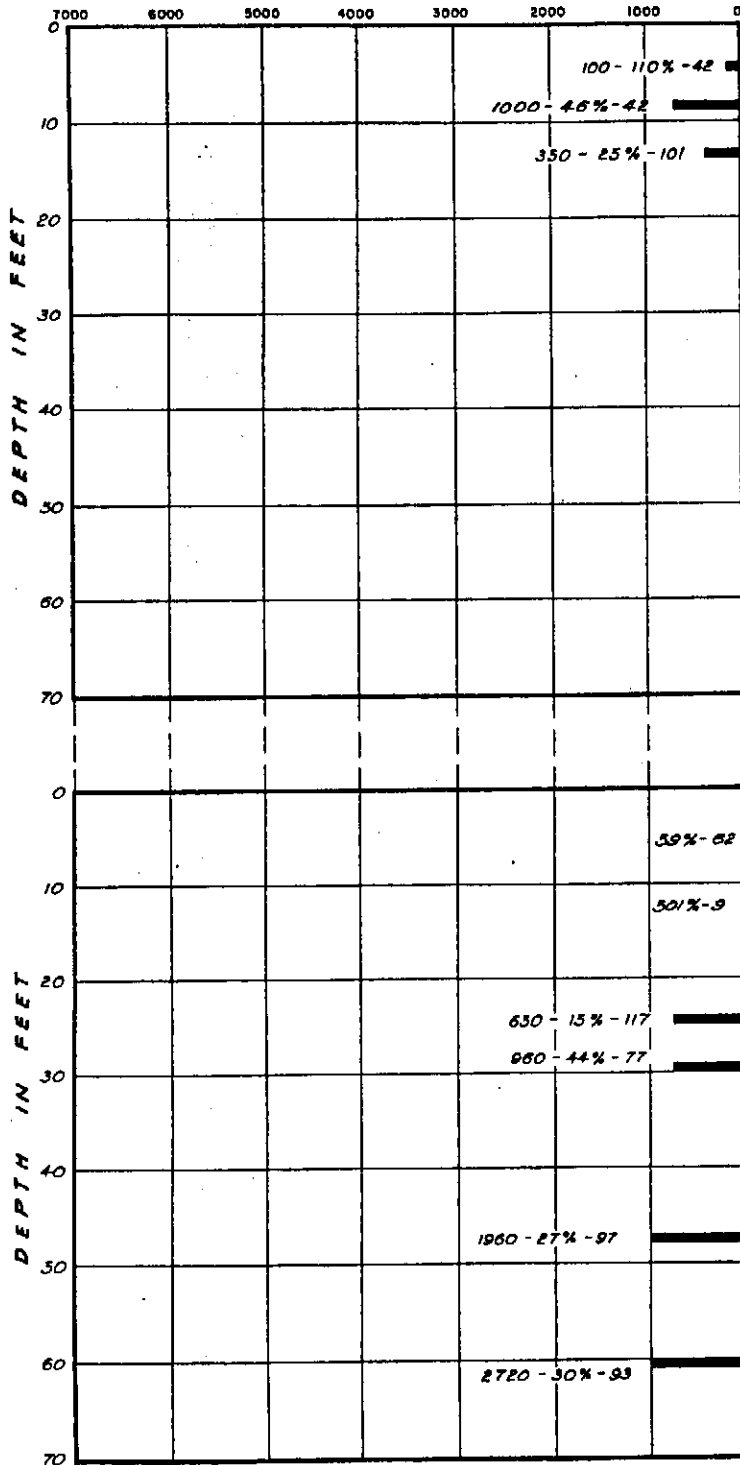


DATE _____
 CHECKED BY _____

DATE _____
 CHECKED BY _____

SHEARING STRENGTH AND FRICTIONAL
 RESISTANCE IN LBS./SQ. FT.

BORING 238 N 379 030
 E 443 403

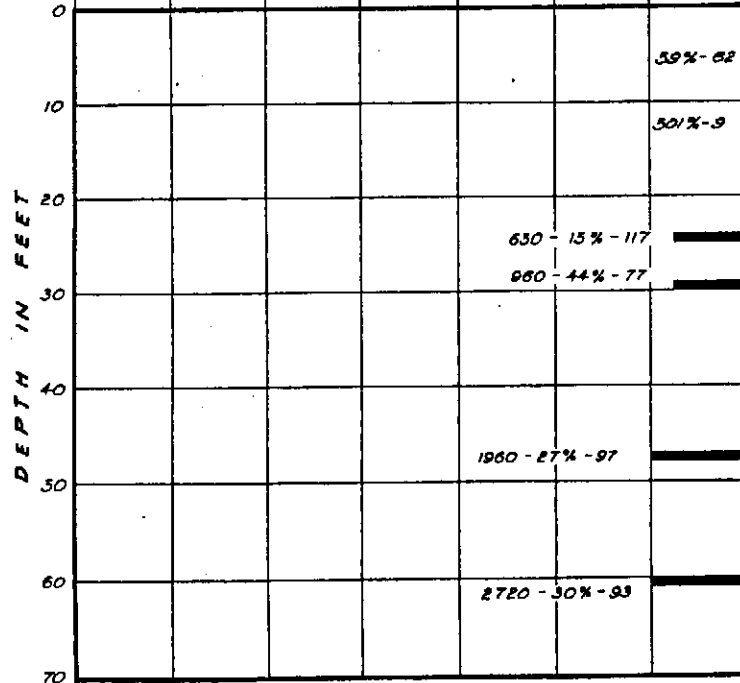


ELEVATION 2.0 FEET MSL *2.0*
 GRAY CLAY WITH DECOMPOSED VEGETATION

YELLOWISH-BROWN PEAT
 BLUISH-GRAY SILTY CLAY LOAM WITH DECOMPOSED VEGETATION
 BROWN MEDIUM TO COARSE SAND WITH DECOMPOSED VEGETATION
 GRADING TO REDDISH-BROWN
 DARK GRAY SILTY CLAY WITH SOME MICA
Qc1 not present
 DARK GREENISH-GRAY SILTY CLAY LOAM WITH SOME MICA AND GRAVEL

Dc54-01

BORING 239 N 578 720
 E 443 830



ELEVATION 3.0 FEET MSL *3.0*
 DARK GRAY SILTY LOAM WITH DECAYED VEGETATION
 GRAY SILTY CLAY WITH DECAYED VEGETATION

YELLOWISH-BROWN PEAT
Qc1 not present
 GRAY SILTY CLAY WITH DECAYED VEGETATION
 GREENISH-GRAY SANDY LOAM WITH GRAVEL AND DECAYED VEGETATION
 GRAYISH-BROWN SILTY CLAY LOAM (GRAVEL)
 BROWN FINE TO MEDIUM SAND WITH GRAVEL OCCASIONAL LAYER OF CLAY
 DARK GRAY SILTY CLAY LOAM
 DARK GRAY FINE TO MEDIUM SAND WITH PATCHES OF SILTY CLAY LOAM
 DARK GRAY SILTY CLAY LOAM

LOG OF BORINGS

UNITED STATES
DEPARTMENT OF THE INTERIOR
GEOLOGICAL SURVEY
WATER RESOURCES DIVISION

9-185
(October 1950)

WELL SCHEDULE
Date MARCH 21, 1956 Field No. 5-237
Record by J. COSKERY Office No. 6-54-1
Source of data LOG of DAMES & MOORE

1. Location: State DEL. County NEW CASTLE
Map GEORD: 578720 N; 443850 E
T 1/4 sec. N 8 R 5 E W
Address TIDE WATER ASSOC. OIL Address DEL. CITY

Tenant
Driller DAMES & MOORE Address

3. Topography SALT WATER MARSH
4. Elevation 3 ft. above MS core below 3/219-55
5. Type: Dug, drilled, driven, bored, jetted
6. Depth: Rept. 60 ft. Meas. _____ ft.
7. Casing: Diam. _____ in., to _____ in., Type _____
Depth _____ ft., Finish _____ From _____ ft. to _____ ft.

8. Chief Aquifer _____
Others _____

9. Water Level _____ ft. reft. _____ 19 _____ above _____ below _____ above surface _____ ft. below _____ G. M.

10. Pump: Type NONE Capacity _____ G. M.
Power: Kind _____ Horsepower _____
11. Yield: Flow _____ G. M., Pump _____ G. M., Meas., Rept. Est. _____
Drawdown _____ ft. after _____ hours pumping _____ G. M.

12. Use: Dom., Stock, PS, RR., Ind., Irr., Obs. TESTHOLE S-237
Adequacy, permanence Abandoned

13. Quality _____ Temp _____
Taste, odor, color _____ Yes _____ No _____
Unfit for _____

14. Remarks: (Log, Analysis) See DC-53-14 for location

0-2.5 River Muck - Silty loam very soft, colored black
2.5-8 Gray silty clay
Some vegetation present
8-23 Yellow-brown peat
(at 19' containing gray silty clay in addition to peat)
23-28.5 Greenish-gray sandy loam. Mostly sand with traces of gravel, peat and decayed veg. also some silt + clay
28.5-32.5 Rust gray silty clay loam
Traces of gravel and mica
32.5-40.5 Brown, fine to medium sand with traces of gravel and occasional layers of clay
40.5-47
47-56 Black, fine to medium sand, trace of clay (presence of gravel noted at 54')
56-60 Dark gray silty clay loam

3-23-37

near the White Abandoned Mine
(27th St N)
Co. (Chippewa) Wis.

Distance of Mine 1/2 mi

3'
50'

