

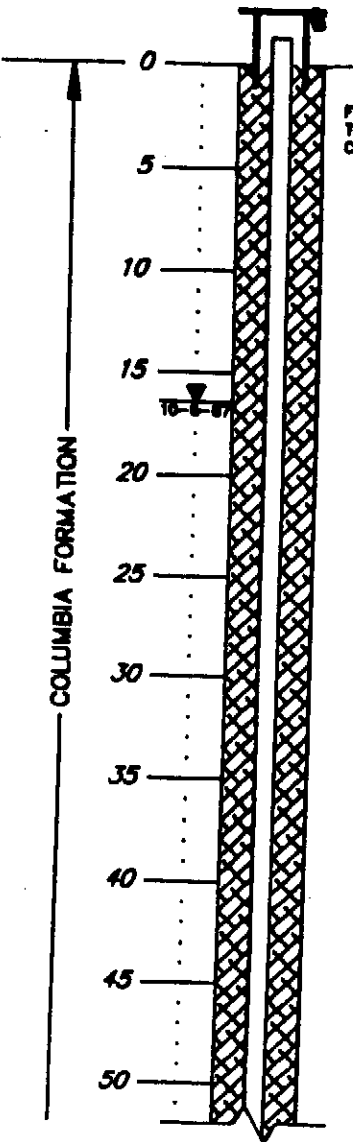
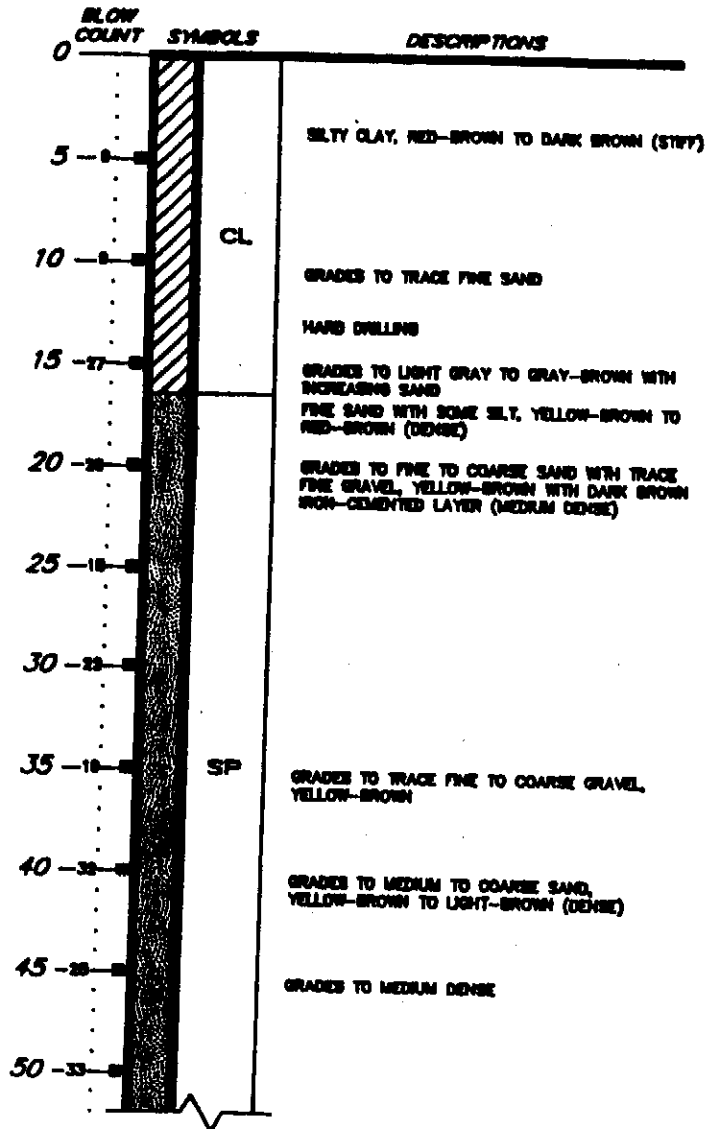
DEPTH
IN
FEET

BORING 36D

WELL 36D

SURFACE ELEVATION = +28.4 FEET

TOP OF PVC ELEVATION = +28.28 FEET



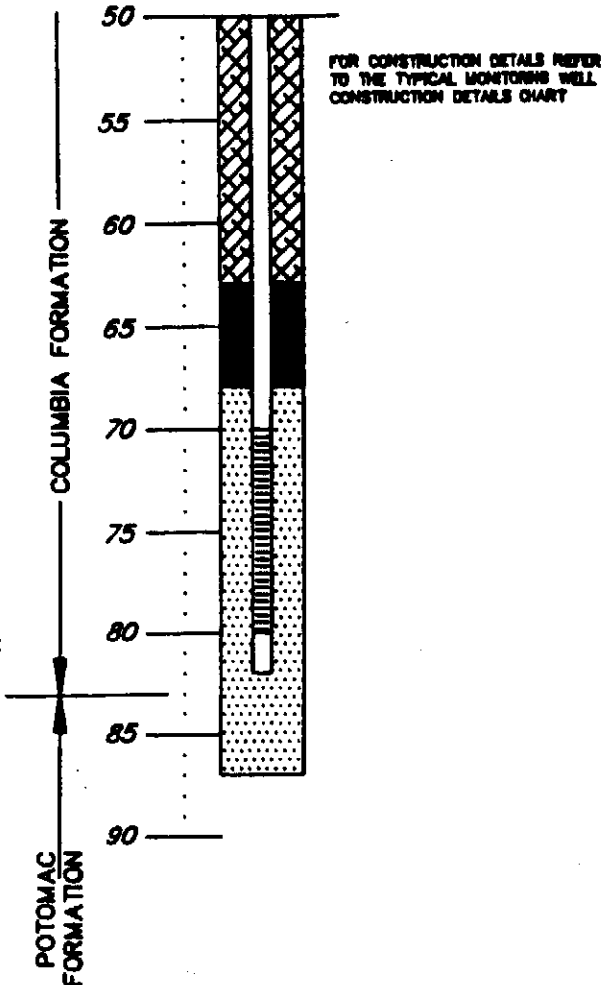
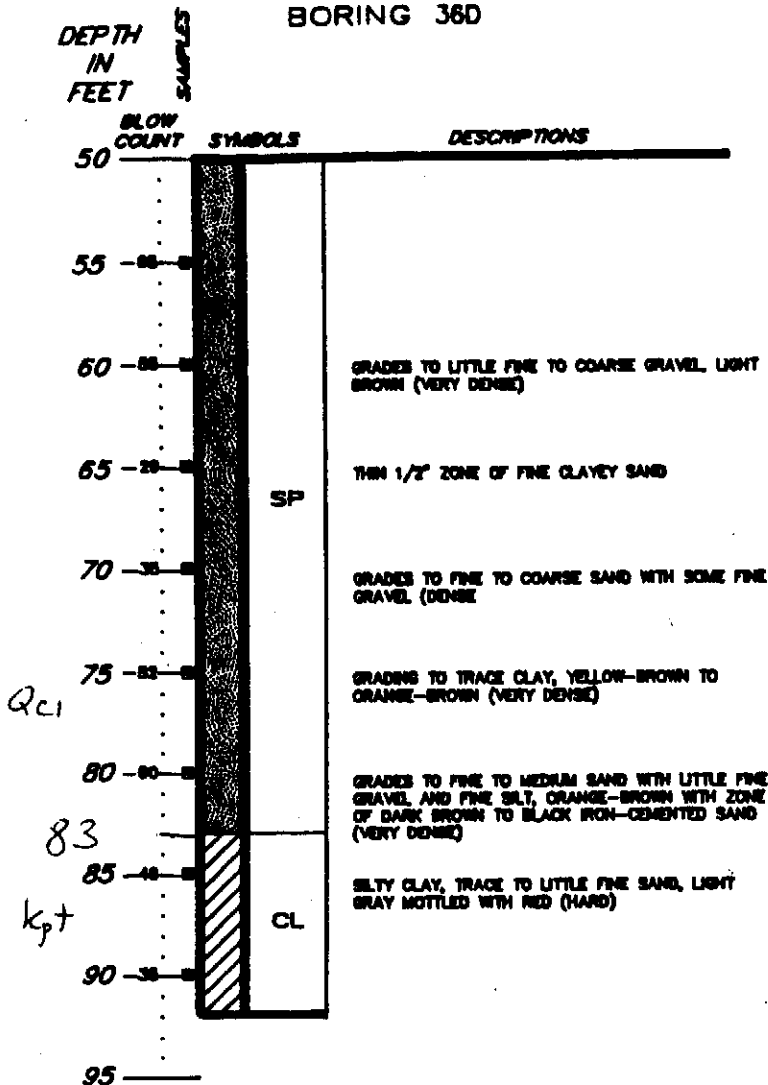
FOR CONSTRUCTION DETAILS REFER TO THE TYPICAL MONITORING WELL CONSTRUCTION DETAILS CHART

SHEET 1 OF 2

LOG OF BORING AND
MONITORING WELL DETAIL
TEXACO REFINERY
DELAWARE CITY, DELAWARE

BORING 36D

WELL 36D



NOTES

1. DRILLING COMPLETED TO A DEPTH OF 92 FEET ON 8-18-67
2. BENTONITE DRILLING MUD USED
3. CAVE IN FROM 87 FEET TO 82 FEET
4. 4" PVC CASING WITH 0.020-INCH SLOTS FROM 70 FEET TO 80 FEET
5. GROUND WATER ELEVATION AT +9.78 FEET (MSLL) OR 16.81 FEET BELOW GROUND SURFACE ON 10-6-67

SHEET 2 OF 2

LOG OF BORING AND
 MONITORING WELL DETAIL
 TEXACO REFINERY
 DELAWARE CITY, DELAWARE

DAMES & MOORE