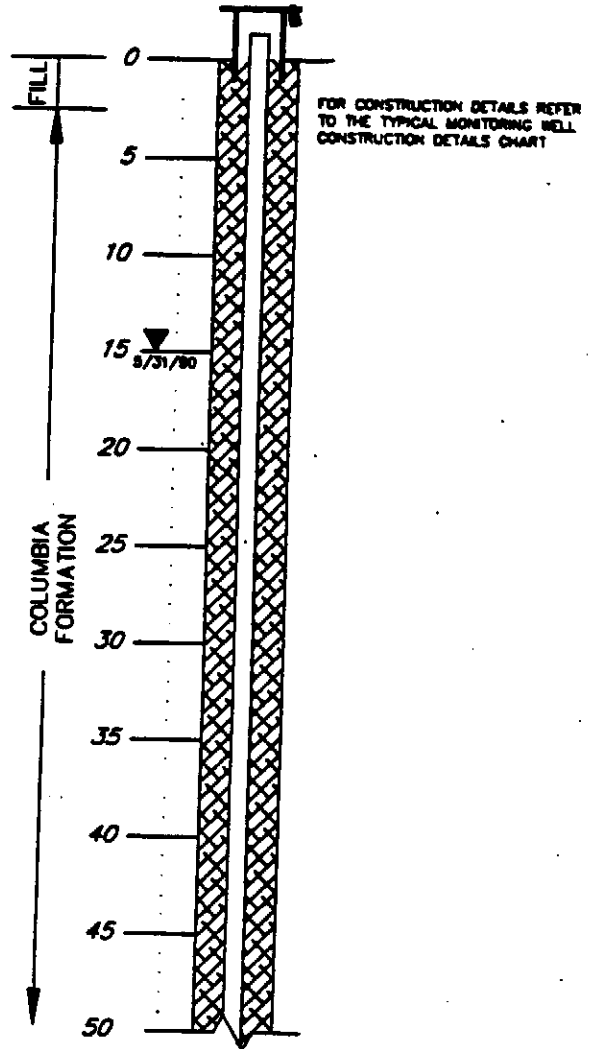
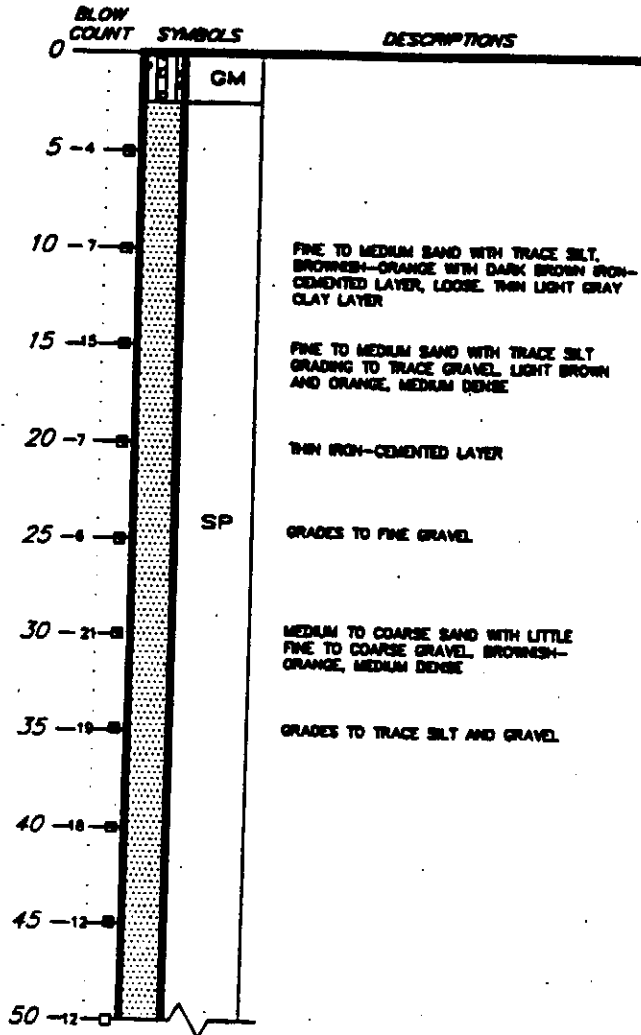


D-53-81

BORING 420  
SURFACE ELEVATION = +23.2'

WELL 420  
TOP OF PVC ELEVATION = +25.21'



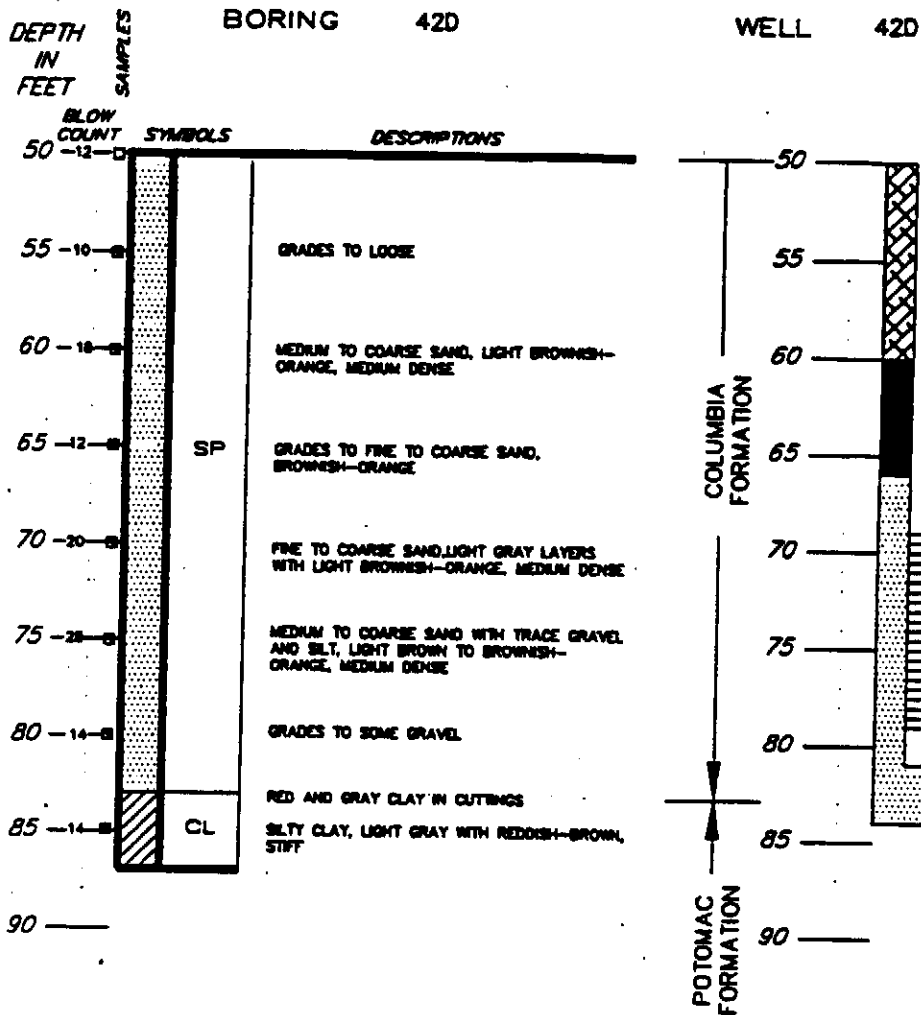
SHEET 1 OF 2

LOG OF BORING AND  
MONITORING WELL DETAIL  
DELAWARE CITY REFINERY  
DELAWARE CITY, DELAWARE

NOTES:

1. DRILLING COMPLETED TO A DEPTH OF 87 FEET ON 5/13/90.
2. BENTONITE DRILLING MUD USED.
3. CAVE IN FROM 84 FEET TO 87 FEET.
4. 4" PVC CASING WITH 0.020-INCH SLOTS FROM 88 FEET TO 78 FEET.
5. GROUND WATER ELEVATION AT +10.21 FEET (MGVD) OR 15.0 FEET BELOW GROUND SURFACE ON 5/31/90.

TEXAS/TEX-N



SHEET 2 OF 2

LOG OF BORING AND  
MONITORING WELL DETAIL  
DELAWARE CITY REFINERY  
DELAWARE CITY, DELAWARE