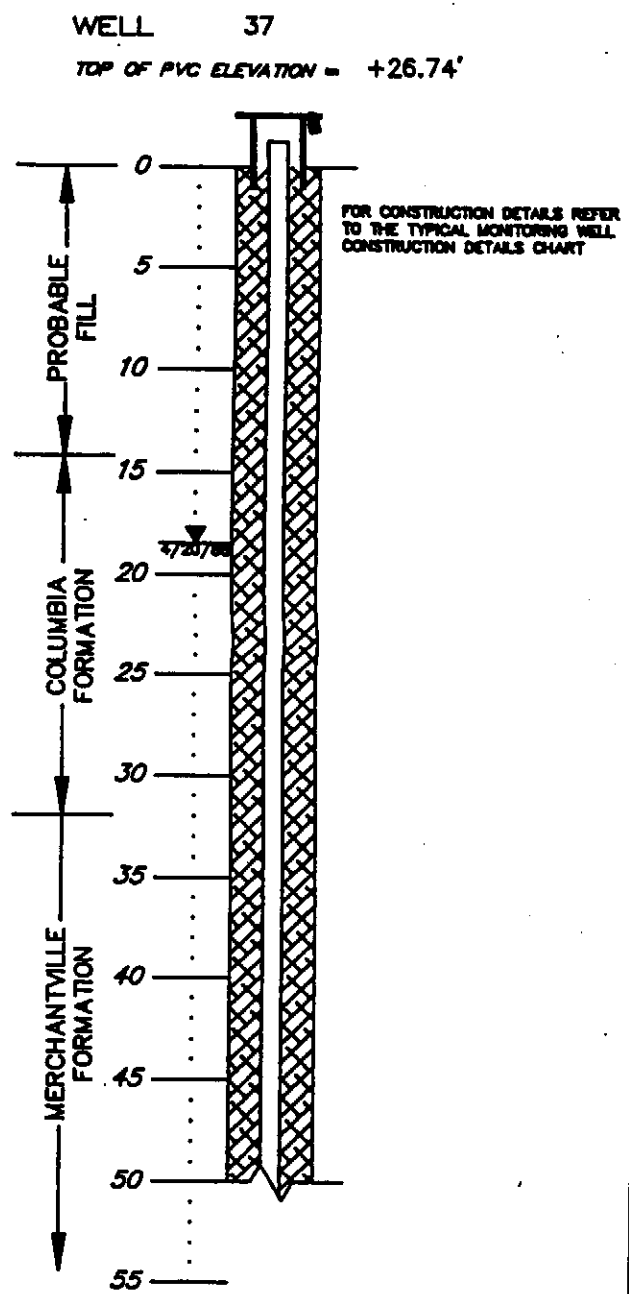
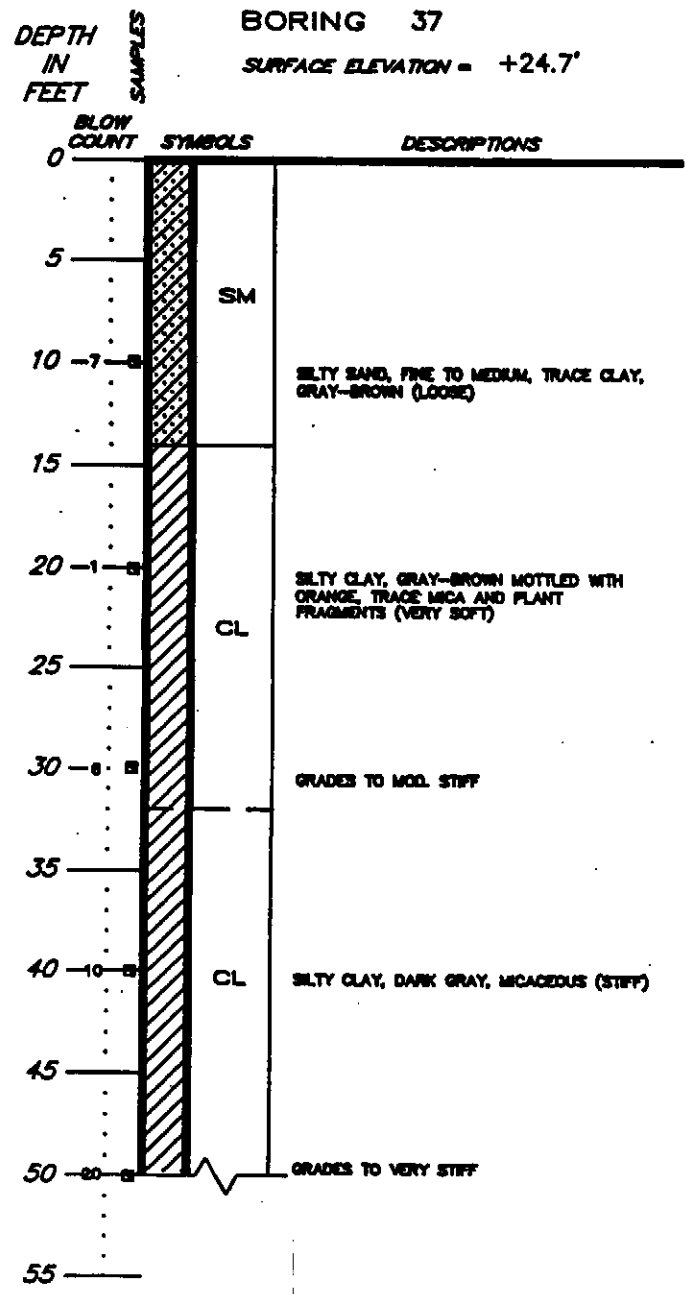


Dc53-78



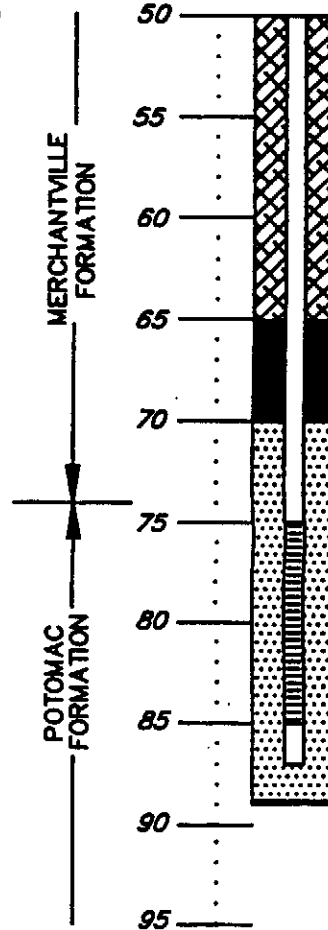
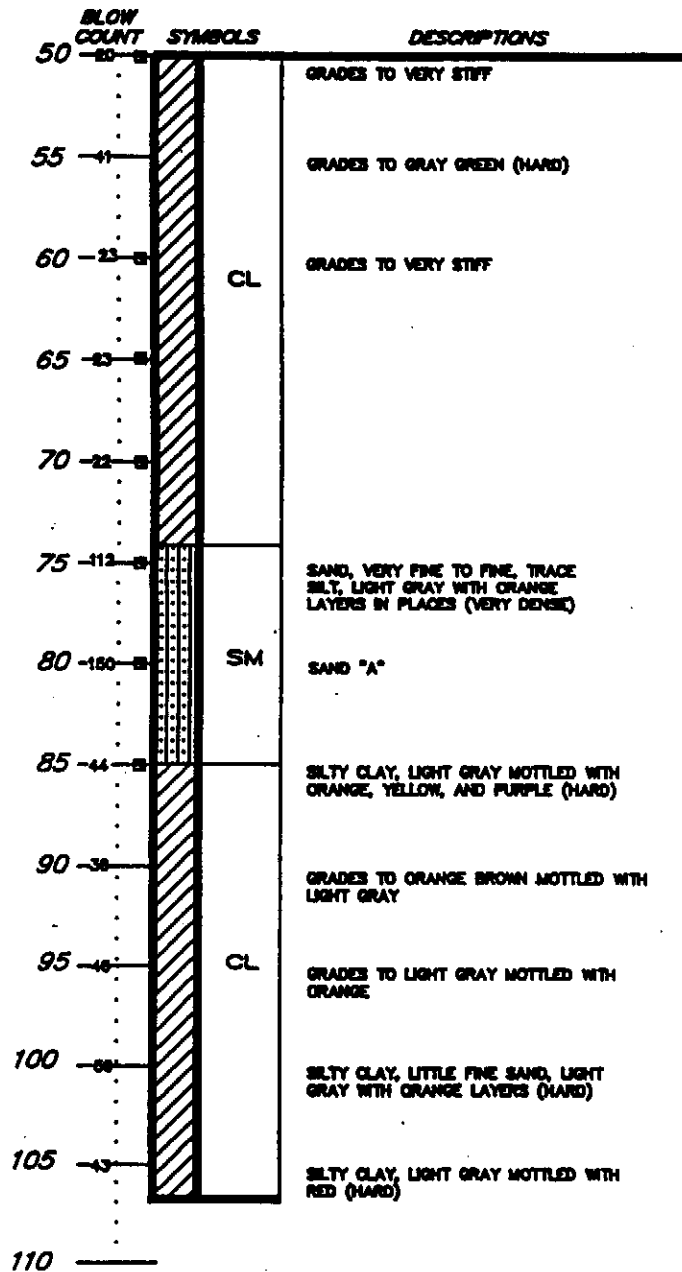
SHEET 1 OF 2

LOG OF BORING AND
MONITORING WELL DETAIL
TEXACO REFINERY
DELAWARE CITY, DELAWARE

DEPTH
IN
FEET

BORING 37

WELL 37



FOR CONSTRUCTION DETAILS REFER TO THE TYPICAL MONITORING WELL CONSTRUCTION DETAILS CHART

NOTES:

1. DRILLING COMPLETED TO A DEPTH OF 107 FEET ON 3/5/88.
2. BENTONITE DRILLING MUD USED.
3. CAVE IN FROM 89 FEET TO 107 FEET.
4. 4" PVC CASING WITH 0.010 INCH SLOTS FROM 75 FEET TO 85 FEET.
5. GROUND WATER ELEVATION AT +6.20 FEET (ABOVE M.S.L.) OR 18.54 FEET BELOW GROUND SURFACE ON 4/20/88.

SHEET 2 OF 2

LOG OF BORING AND
MONITORING WELL DETAIL
TEXACO REFINERY
DELAWARE CITY, DELAWARE

DAMES & MOORE