

MW-2

Dc53-73

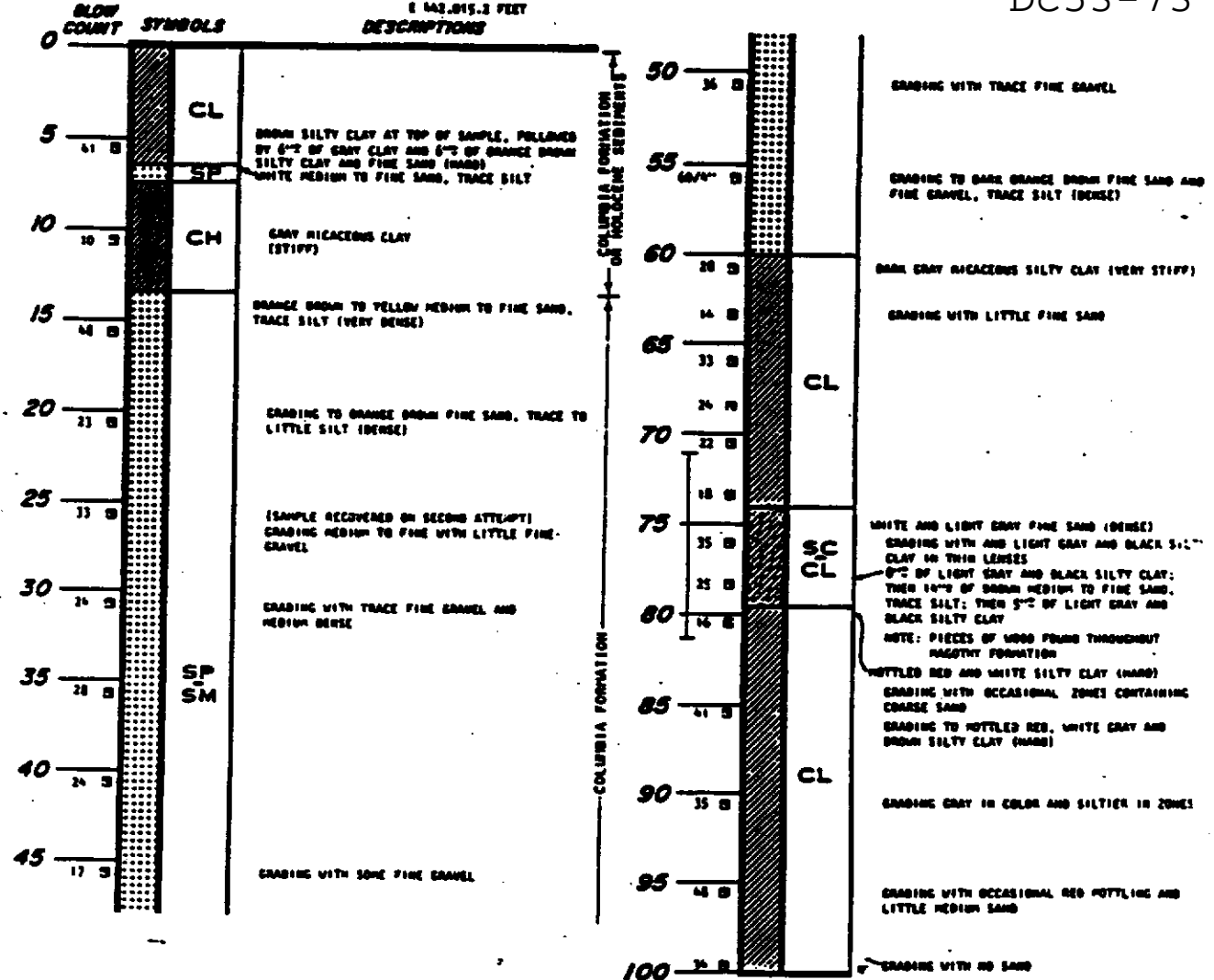
Dc53-73

DEPTH IN FEET

WELL 2

SURFACE ELEVATION = 28.5 FEET el = 28.5'

TOP OF WELL CASING = 30.00 FEET  
COORDINATES : N 581,101.4 FEET  
E 142,815.3 FEET



LOG OF BORING AND WELL

- NOTES:
1. DRILLING COMPLETED AT A DEPTH OF 100.0 FT ON APRIL 21, 1978.
  2. "REVERT" DRILLING ROD USED.
  3. 4" Ø PVC CASING WITH 0.500" WIDE SLOTS PLACED FROM A DEPTH OF 71.5 FEET TO 84.5 FEET.
  4. PIEZOMETRIC SURFACE OF MAGDLEN FORMATION AT ELEVATION +10.5 FT ON AUGUST 4, 1978.

LOG OF SOIL BORING AND MONITORING WELL DETAIL  
STAR ENTERPRISE  
DELAWARE CITY, DELAWARE