

Well D-7

Dc53-55

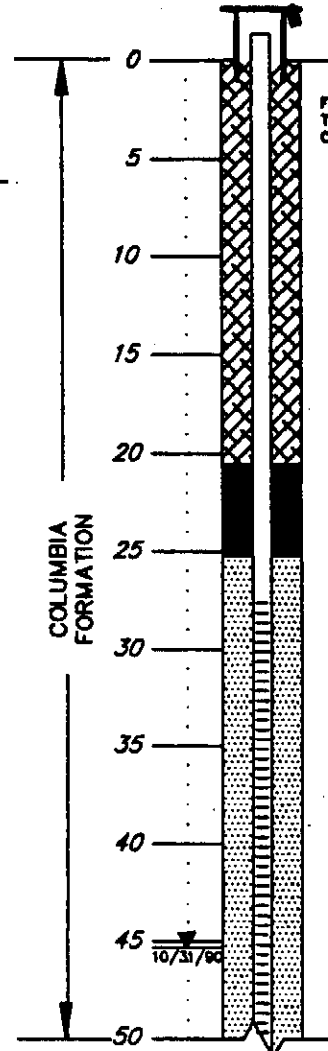
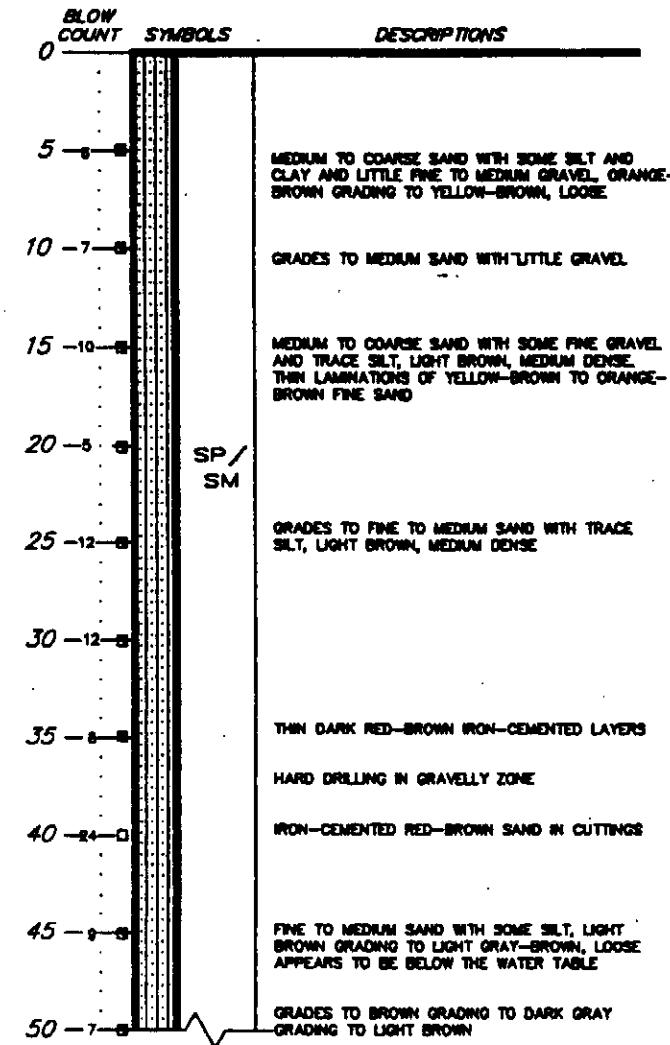
DEPTH
IN
FEET

BORING D7

WELL D7

SURFACE ELEVATION = +58.9'

TOP OF PVC ELEVATION = +60.78'



FOR CONSTRUCTION DETAILS REFER TO THE TYPICAL MONITORING WELL CONSTRUCTION DETAILS CHART

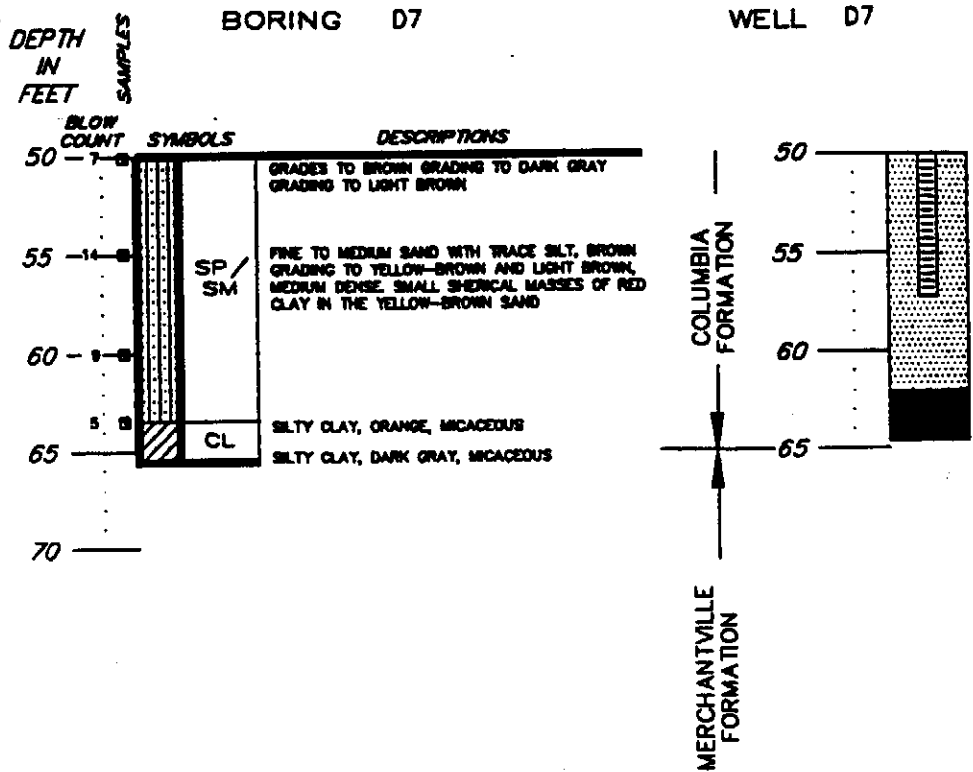
COLUMBIA FORMATION

10/31/90

SHEET 1 OF 2
 LOG OF BORING AND
 MONITORING WELL DETAIL
 DELAWARE CITY REFINERY
 DELAWARE CITY, DELAWARE

DC-07 (2)

DAMES & MOORE



SHEET 2 OF 2

LOG OF BORING AND
MONITORING WELL DETAIL
DELAWARE CITY REFINERY
DELAWARE CITY, DELAWARE

NOTES:

1. DRILLING COMPLETED TO A DEPTH OF 65 FEET ON 10/23/90.
2. BENTONITE DRILLING MUD WAS USED.
3. CAVE-IN FROM 64.8 FEET TO 65.5 FEET.
4. 4" PVC CASING WITH 0.010 SLOTS FROM 27.7 FEET TO 57.3 FEET.
5. GROUND WATER ELEVATION AT +16.80 FEET (NGVD) OR 46.3 FEET BELOW GROUND SURFACE ON 10/31/90.

TEX-D7A (2)