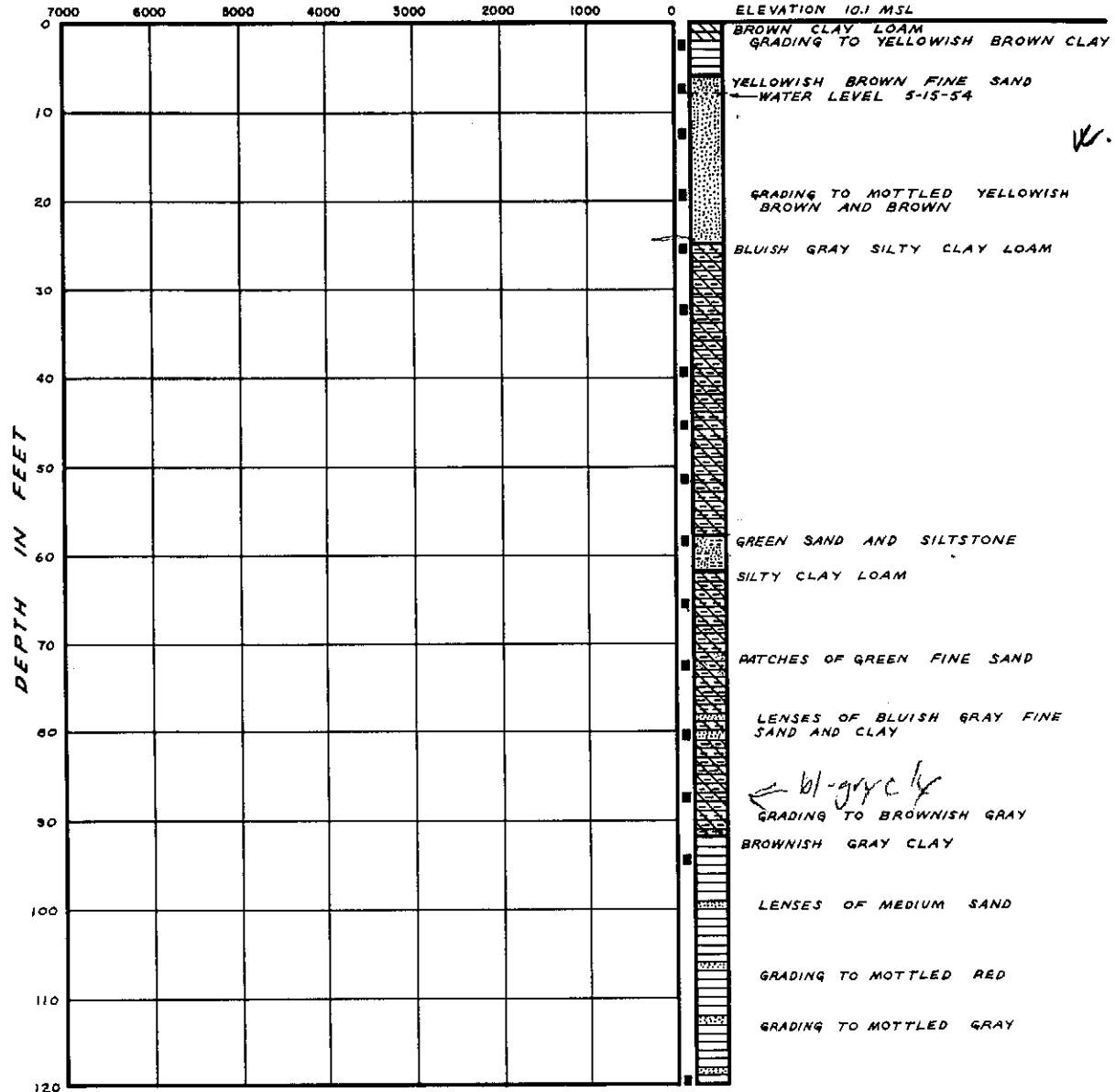


Dc53-24

BORING 15 N 577,600 E 442,480

SHEARING STRENGTH AND FRICTIONAL RESISTANCE IN LBS./SQ. FT.



REVISIONS BY DATE TO 90 TO 60 OF PLATES

FILE 163-AA BY BS DATE TO 60 CHECKED BY APPROVED BY OFFICE ENGINEER

LOG OF BORINGS

* DRILLERS MUD USED THROUGHOUT BORING

DAMES & MOORE Civil Engineers FOUNDATION INVESTIGATIONS · SOIL MECHANICS ENGINEERING

PLATE A-1-N