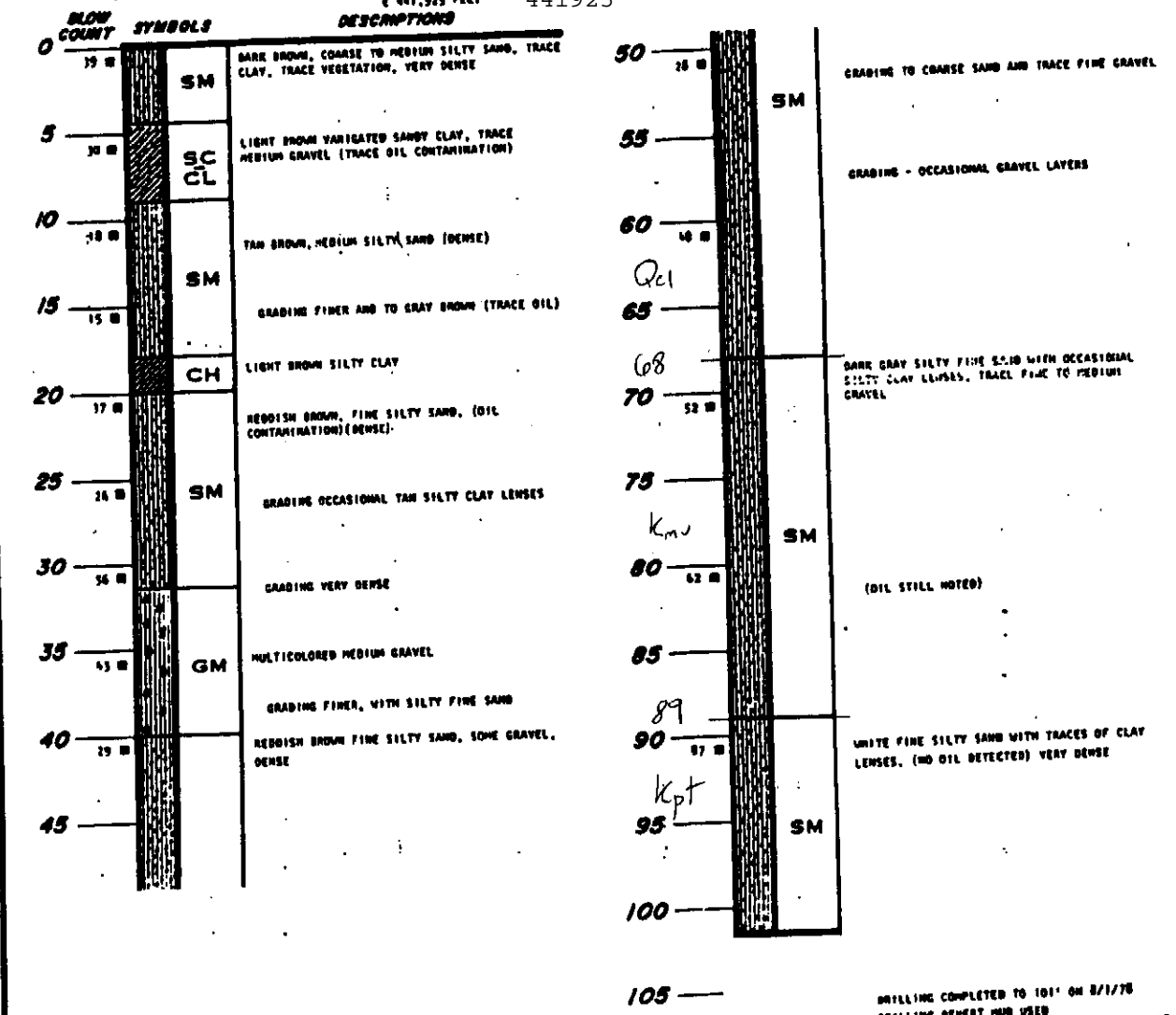


Dc53-186

BORING 19
 SURFACE ELEVATION 23.6 ft
 COORDINATES: N 577,525 FEET 577575
 E 441,525 FEET 441925



DRILLING COMPLETED TO 101' ON 8/1/78
 DRILLING REVERT MUD USED
 15' OF 1 1/2" PVC PIPE INSTALLED ON 8/2/78
 WATER LEVEL RECORDED AT DEPTH OF 12.2 FT.
 ON 8/4/78

LOG OF BORING