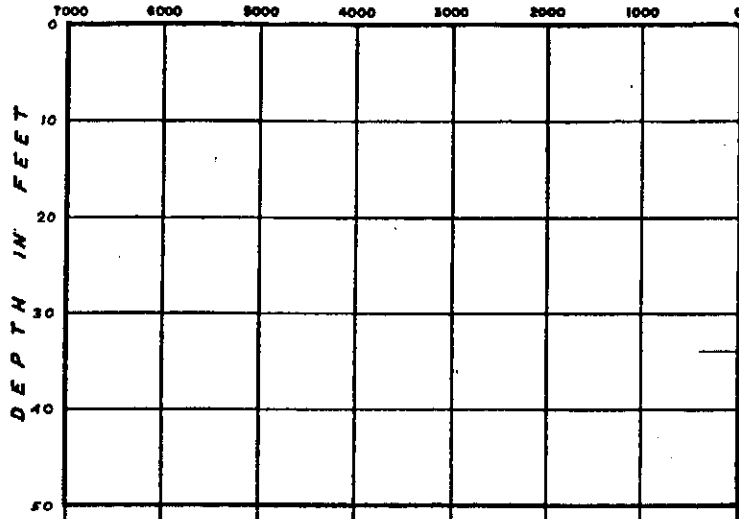


DC 52-170

SHEARING STRENGTH AND FRICTIONAL RESISTANCE IN LBS./SQ. FT.

BORING 79 N 578 .855
E 435 .305



ELEVATION 67.3 FEET MSL 67.9

BROWN CLAY LOAM
GRADING TO YELLOWISH-BROWN
YELLOWISH-BROWN MEDIUM TO COARSE SAND WITH GRAVEL

WATER LEVEL 8-10-54 (NOT STABLE)
GRADING TO COARSE

POCKETS OF MOTTLED ORANGE, BROWN, AND GRAY CLAY

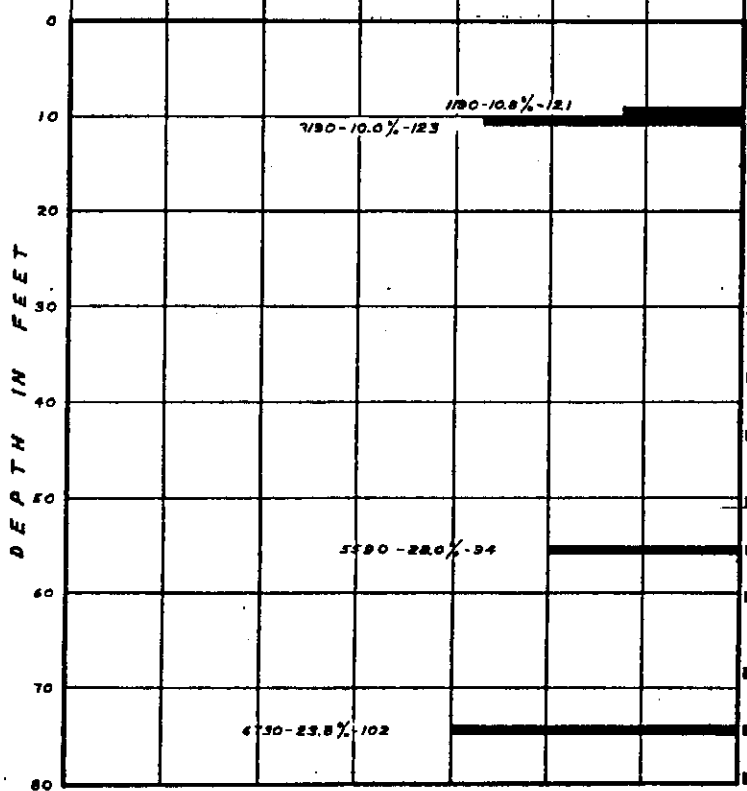
ESTIMATED STABLE WATER LEVEL

DARK GRAY SANDY LOAM (MICACEOUS) WITH GRAVEL 34

DARK GRAY LOAM (MICACEOUS) WITH STREAKS OF GREEN FINE SAND

Qc1
kmv

BORING 81 N 578 .135
E 435 .605



ELEVATION 71.6 FEET MSL 71.6

BROWN CLAY LOAM

(GRAVEL)
YELLOWISH-BROWN MEDIUM SAND WITH GRAVEL

(GRAVEL)

LENS OF GRAVEL AND COBBLES

(GRAVEL)

ESTIMATED STABLE WATER LEVEL

DARK GRAY LOAM (MICACEOUS) 51

GRADINGS WITH PATCHES OF GRAY FINE SAND

MOTTLED GREENISH-GRAY AND BROWN SANDY LOAM (MICACEOUS)

Qc1
kmv

LOG OF BORINGS

* DRILLERS MUD USED THROUGHOUT BORING.