

579.6 A

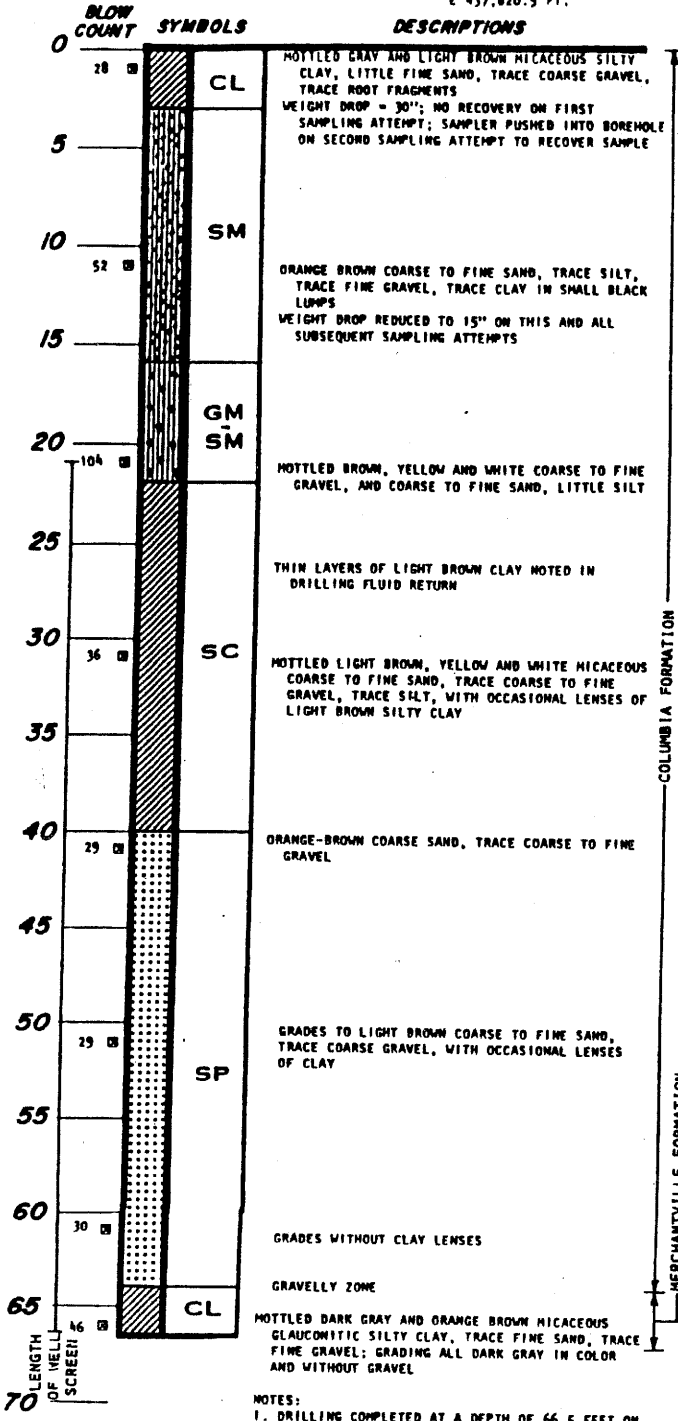
DC52-120

DEPTH  
IN  
FEET

SAMPLES

**WELL C-7**

SURFACE ELEVATION +56.50 FEET  
TOP OF WELL CASING: +57.84 FEET  
COORDINATES: N 581,140.4 FT.  
E 437,820.5 FT.



COLUMBIA FORMATION

MERCHANTVILLE FORMATION

**GENERAL NOTES  
PLUS  
LOG OF WELL**

- GENERAL NOTES:
1. THE FIGURES IN THE COLUMN LABELED "BLOW COUNT" ARE THE NUMBER OF BLOWS REQUIRED TO DRIVE A STANDARD SPLIT-SPOON SAMPLER A DISTANCE OF ONE FOOT USING A SECTION OF DRILL ROD, WITH A REPORTED BUT UNVERIFIED WEIGHT OF 140 POUNDS, FALLING A VARIABLE DISTANCE (SPECIFIED ON THE WELL LOG) AT THE END OF A STEEL CABLE. THE STANDARD SPLIT-SPOON SAMPLER IS 2 INCHES O.D. AND 1-3/8 INCHES I.D.
  2. ELEVATIONS ARE IN FEET AND REFER TO A DATUM OF MEAN SEA LEVEL WHICH HAS AN ASSIGNED ELEVATION OF 0.0
  3. COORDINATES ARE IN FEET AND REFER TO THE STATE OF DELAWARE GRID SYSTEM.
  4. THE DISCUSSION OF SOIL CONDITIONS IN THE TEXT OF THE REPORT IS NECESSARY FOR A PROPER UNDERSTANDING OF THE NATURE OF THE SUBSURFACE MATERIALS

KEY:

☐ STANDARD SPLIT-SPOON SAMPLE

- NOTES:
1. DRILLING COMPLETED AT A DEPTH OF 66.5 FEET ON OCTOBER 23, 1979.
  2. "REVERT" DRILLING MUD USED.
  3. 4" Ø PVC CASING WITH 0.020" WIDE SLOTS PLACED FROM A DEPTH OF 21.5 FEET TO 66.5 FEET
  4. GROUNDWATER AT A DEPTH OF 35.37 FEET BELOW TOP OF WELL CASING ON OCTOBER 25, 1979.