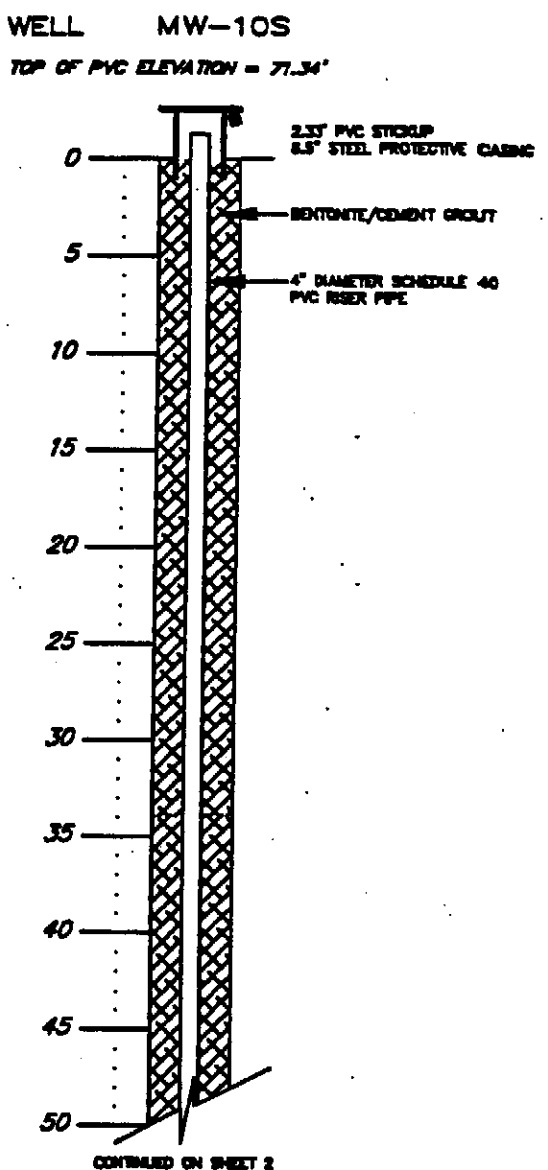
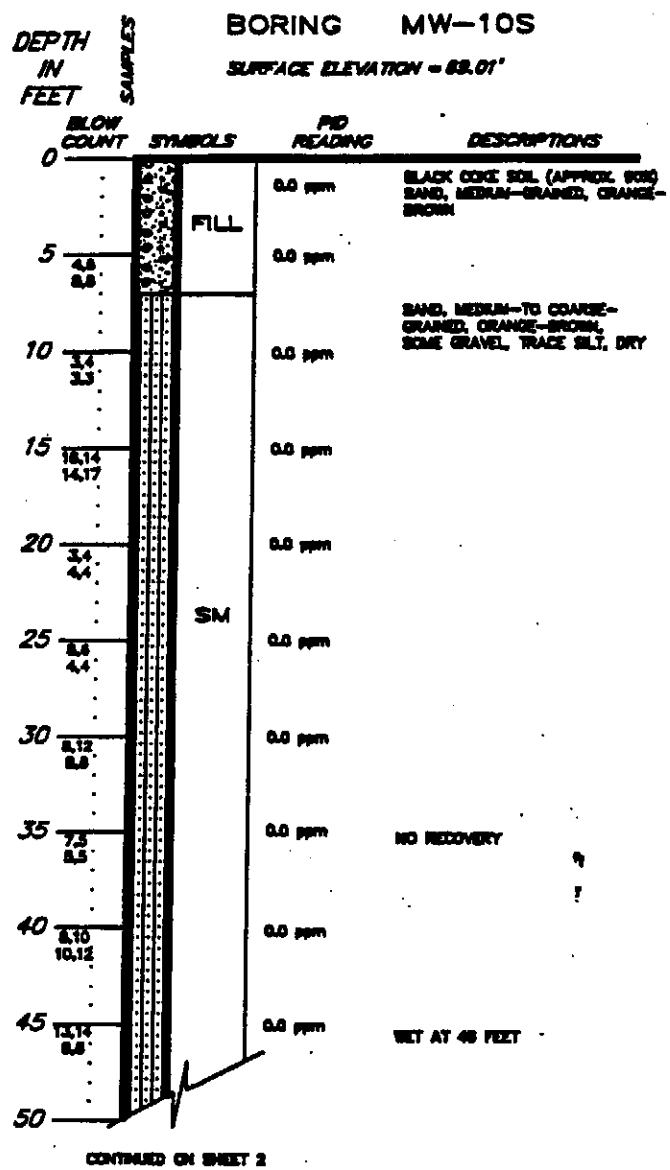


DC52-112

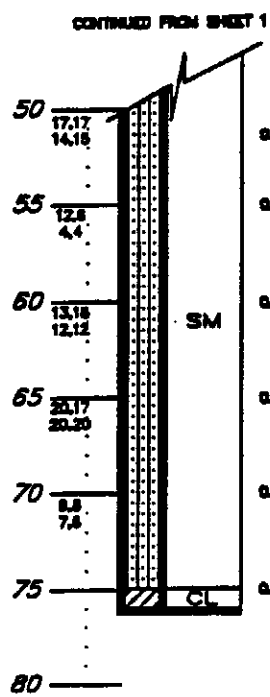


LOG OF SOIL BORING AND
MONITORING WELL DETAIL
INDUSTRIAL WASTE LANDFILL
STAR ENTERPRISE
DELAWARE CITY, DELAWARE

22347013\MW-10SA 07/13/93 07:20

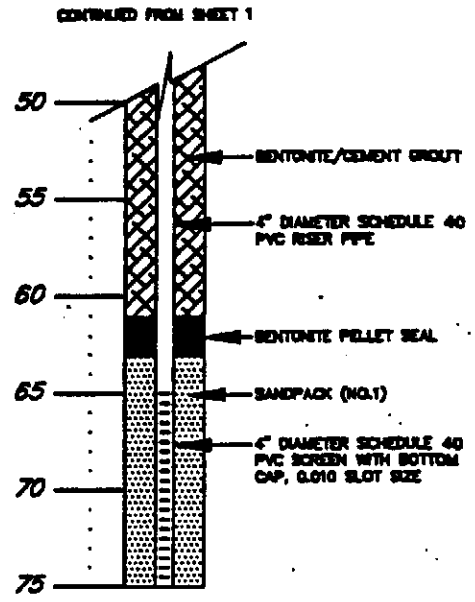
BORING MW-10S WELL MW-10S

DEPTH IN FEET SAMPLES BLOW COUNT SYMBOLS FID READING DESCRIPTIONS



CONTINUED FROM SHEET 1

FID READING	DESCRIPTIONS
0.0 ppm	NO RECOVERY
0.0 ppm	
0.0 ppm	
0.0 ppm	NO RECOVERY
0.0 ppm	
0.0 ppm	
0.0 ppm	CLAY AND SILT, MICAEOUS, DARK GRAY TOTAL DEPTH = 75 FEET



NOTES:

1. BORING TERMINATED AT A DEPTH OF 75 FEET BELOW GROUND SURFACE (BGS) ON JUNE 3, 1993. WELL COMPLETED ON JUNE 4, 1993.
2. BORING DRILLED BY J.C. ANDERSON, INC. OF MOUNT LAUREL, NEW JERSEY.
3. A 2-INCH DIAMETER SPLIT-SPOON SOIL SAMPLE WAS COLLECTED AT 9-FOOT INTERVALS.
4. BORING WAS ADVANCED BY 8-INCH MID ROTARY, SPADE DRILL TO A DEPTH OF 75 FEET.
5. A 4-INCH DIAMETER PVC MONITORING WELL WAS INSTALLED IN THE BOREHOLE ON JUNE 3, 1993.
6. WATER TABLE ENCOUNTERED ON JUNE 3, 1993 AT 48 FEET BGS.
7. CONTACT BETWEEN THE MERCHANTVILLE AND COLUMBIA FORMATIONS IDENTIFIED AT 75 FEET BGS.
8. DEPTH TO WATER ON JUNE 9, 1993 WAS 48.88 FEET (BGS).
9. FID READINGS ARE WITH RESPECT TO BACKGROUND AND REPRESENT THE FID READINGS OF RECOVERED SOIL SAMPLES (HEADSPACE ANALYSIS).

LOG OF SOIL BORING AND MONITORING WELL DETAIL INDUSTRIAL WASTE LANDFILL STAR ENTERPRISE DELAWARE CITY, DELAWARE

(3) 22347-01\MW-10SB 08/22/93 02:26

2/2 X