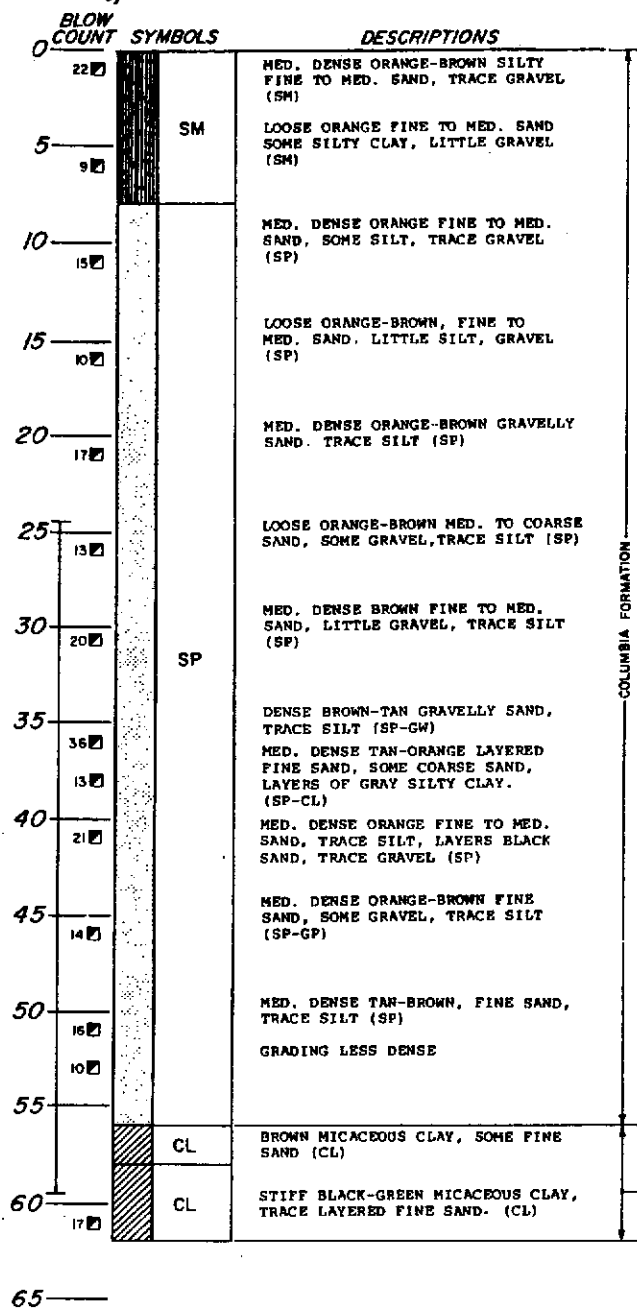


DC52-101

WELL C-21
 SURFACE ELEVATION: +66.46 FT.
 TOP OF WELL CASING: +68.13 FT.
 COORDINATES: N580,550.5 FT.
 E436,200.4 FT.

DEPTH
 IN
 FEET



LENGTH OF WELL SCREEN

- NOTES FOR WELL C21:
1. DRILLING COMPLETED TO A DEPTH OF 62 FEET ON MARCH 15, 1984.
 2. NO CASING USED IN DRILLING.
 3. BENTONITE DRILLING MUD USED.
 4. 4-INCH DIAMETER PVC WELL CASING INSTALLED TO 59.5 FEET.
 5. 35 FEET OF 4 INCH DIAMETER PVC SCREEN SET FROM 24.5 TO 59.5 FEET.
 6. GROUNDWATER LEVEL MEASURED AT:
 ELEVATION 26.99 FT. (3-17-84)
 ELEVATION 27.36 FT. (4- 3-84)
 ELEVATION 28.25 FT. (5- 2-84)
 7. DELAWARE WELL PERMIT NO. 56327.

WELL LOGS

- GENERAL NOTES:
1. THE FIGURE IN THE COLUMN LABELED "BLOW COUNT" REFER TO THE NUMBER OF BLOWS REQUIRED TO DRIVE A SPLIT SPOON SAMPLER FOR ONE FOOT. A 3-INCH OUTSIDE DIAMETER SPOON WAS USED WITH A 300 POUND DRIVE WEIGHT FALLING 30 INCHES.
 2. LETTER "P" IN THE "BLOW COUNT" COLUMN INDICATES THAT THE SAMPLE WAS OBTAINED USING A SHELBY TUBE SAMPLER. THE SAMPLE TUBE IS 30 INCHES LONG, 3 INCHES O.D., AND ABOUT 2.9 INCHES I.D. MADE OF STEEL OR BRASS. THE SAMPLE TUBES WERE ADVANCED HYDRAULICALLY.
 3. ELEVATIONS ARE IN FEET REFER TO MEAN SEA LEVEL DATUM OF 0.0 FEET.
 4. COORDINATES ARE IN FEET REFER TO THE STATE OF DELAWARE GRID SYSTEM.

COLUMBIA FORMATION
 MERCHANTVILLE FORMATION