

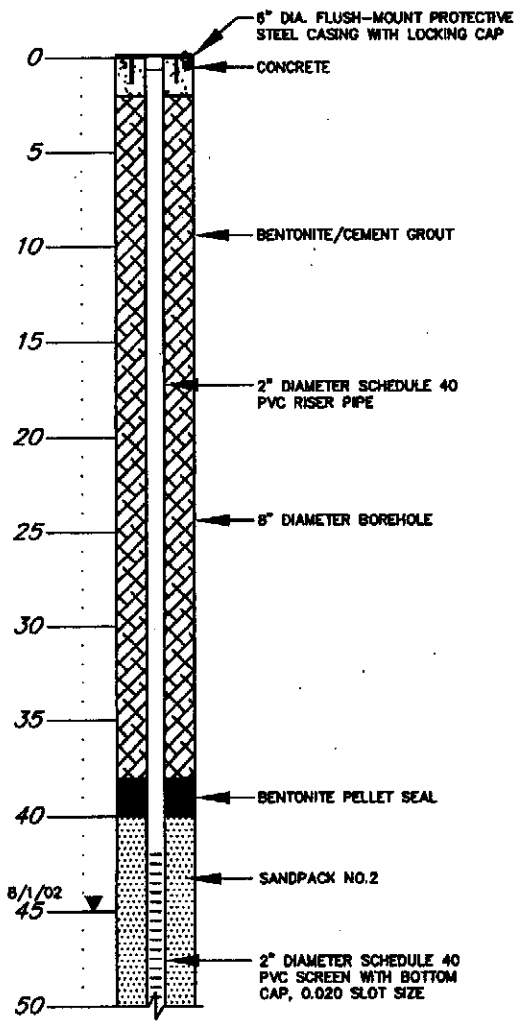
Dc 42-39

DEPTH
IN
FEET

BORING C37
SURFACE ELEVATION = 60.13

WELL C37
TOP OF PVC ELEVATION = 59.87

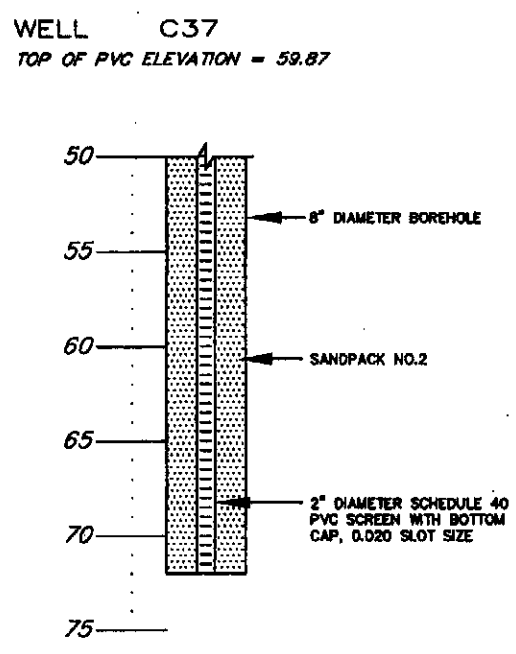
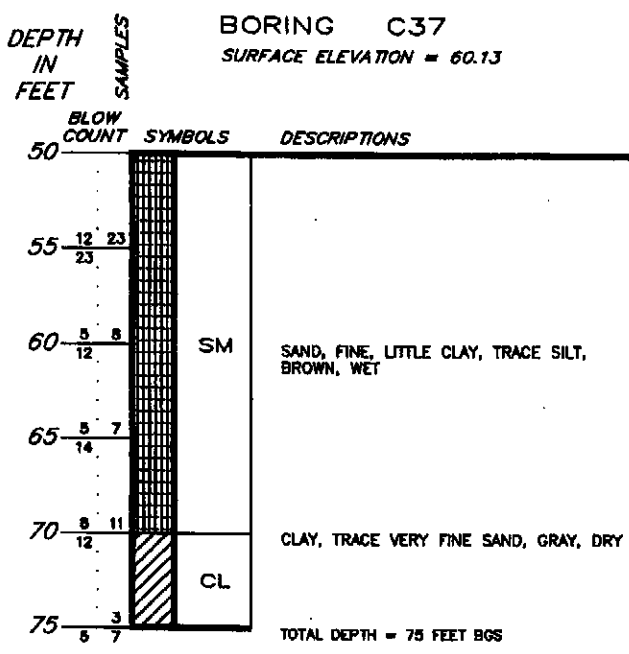
BLOW COUNT	SYMBOLS	DESCRIPTIONS
0	FILL	SELECT FILL - COARSE ANGULAR GRAVEL, SILT, AND SAND (CRUSHER RUN)
5	SM	SAND, FINE, TRACE SILT, ORANGE, DRY
9	ML	SILT, LITTLE FINE SAND, TRACE FINE SUBANGULAR GRAVEL
10		SAND, FINE TO COARSE, LITTLE COARSE ROUND QUARTZ GRAVEL, BROWN, DRY
15		
20		
25		SAND, FINE TO MEDIUM, LITTLE SILT, TRACE FINE ROUND GRAVEL, YELLOW-BROWN, DRY
30	SM	
35		
40		
45		WET AT 44 FEET
50		



LOG OF SOIL BORING AND
MONITORING WELL DETAIL
MOTIVA ENTERPRISES LLC
DELAWARE CITY, DELAWARE

- NOTES:
- BORING ADVANCED TO A DEPTH OF 75 FEET BELOW GROUND SURFACE ON 7/19/02 BY WALTON CORPORATION OF NEWARK, DELAWARE.
 - 2" PVC MONITORING WELL INSTALLED TO A DEPTH OF 72 FEET BELOW GROUND SURFACE ON 7/19/02.
 - MONITORING WELL C37 WAS DEVELOPED ON 8/1/02.
 - A "BLOW COUNT" REFERS TO THE NUMBER OF BLOWS REQUIRED TO DRIVE A STANDARD SPLIT SPOON SAMPLER

De 40-39-01



LOG OF SOIL BORING AND
MONITORING WELL DETAIL
MOTIVA ENTERPRISES LLC
DELAWARE CITY, DELAWARE

X