

INDEX TO GEOLOGIC MAPS FOR KENTUCKY

KENTUCKY GEOLOGICAL SURVEY, UNIVERSITY OF KENTUCKY, Lexington, Kentucky
James C. Cobb, State Geologist and Director

In Cooperation With

UNITED STATES GEOLOGICAL SURVEY, DEPARTMENT OF THE INTERIOR
Charles G. Groat, Director

PURCHASE OF MAPS
Geologic quadrangle maps at a scale of 1:24,000 are available for purchase at a price of \$7 each, plus postage and handling. Quadrangle names and map numbers are shown on the index; order by quadrangle name only.

For information on obtaining copies of this index map, geologic maps, and other Kentucky Geological Survey maps and publications call:

Publication Sales
859.257.3896

View the KGS World Wide Web site at
www.uky.edu/kgs

ELECTRONIC DATA
Geologic quadrangle maps (GQ's) are available as digital ESRI shapefile data sets that can be used in geographic information systems. The following Web page contains a status map and contact information for ordering:
www.uky.edu/kgs/statusmap

Scanned, georeferenced images of GQ maps in MrSid format can be downloaded from the following Web site:
kymartian.state.ky.us/gqmapps

7.5-minute geologic quadrangle maps at a scale of 1:24,000, or 1 inch = 2,000 feet, have been published for the entire Commonwealth of Kentucky.

30 x 60 minute quadrangle boundaries are shown in blue.

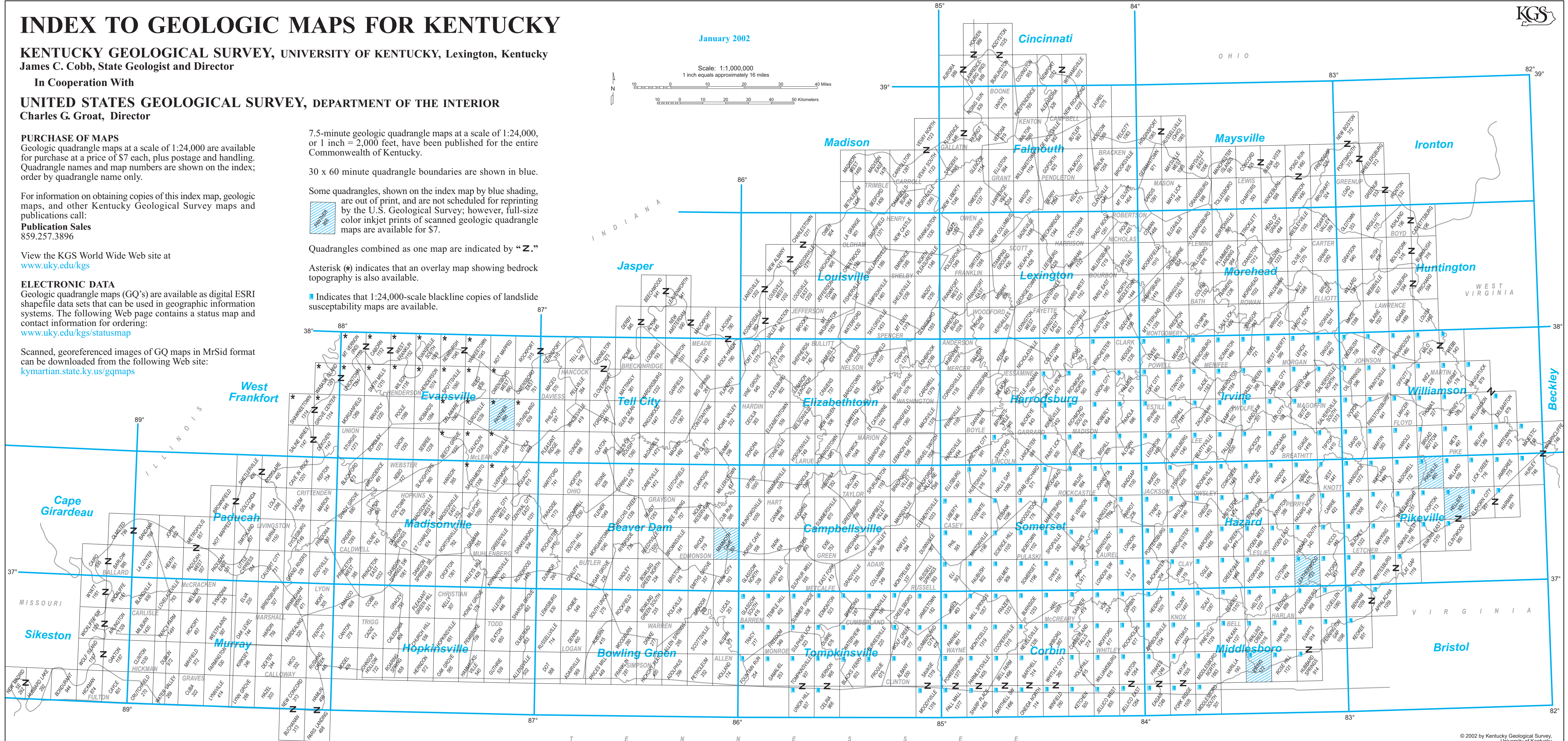
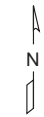
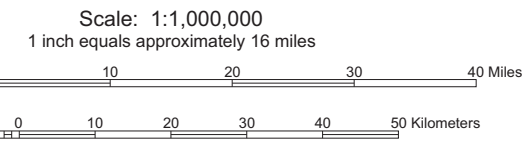
Some quadrangles, shown on the index map by blue shading, are out of print, and are not scheduled for reprinting by the U.S. Geological Survey; however, full-size color inkjet prints of scanned geologic quadrangle maps are available for \$7.

Quadrangles combined as one map are indicated by "Z."

Asterisk (*) indicates that an overlay map showing bedrock topography is also available.

■ Indicates that 1:24,000-scale blackline copies of landslide susceptibility maps are available.

January 2002



THIS INDEX MAP IS FREE UPON REQUEST