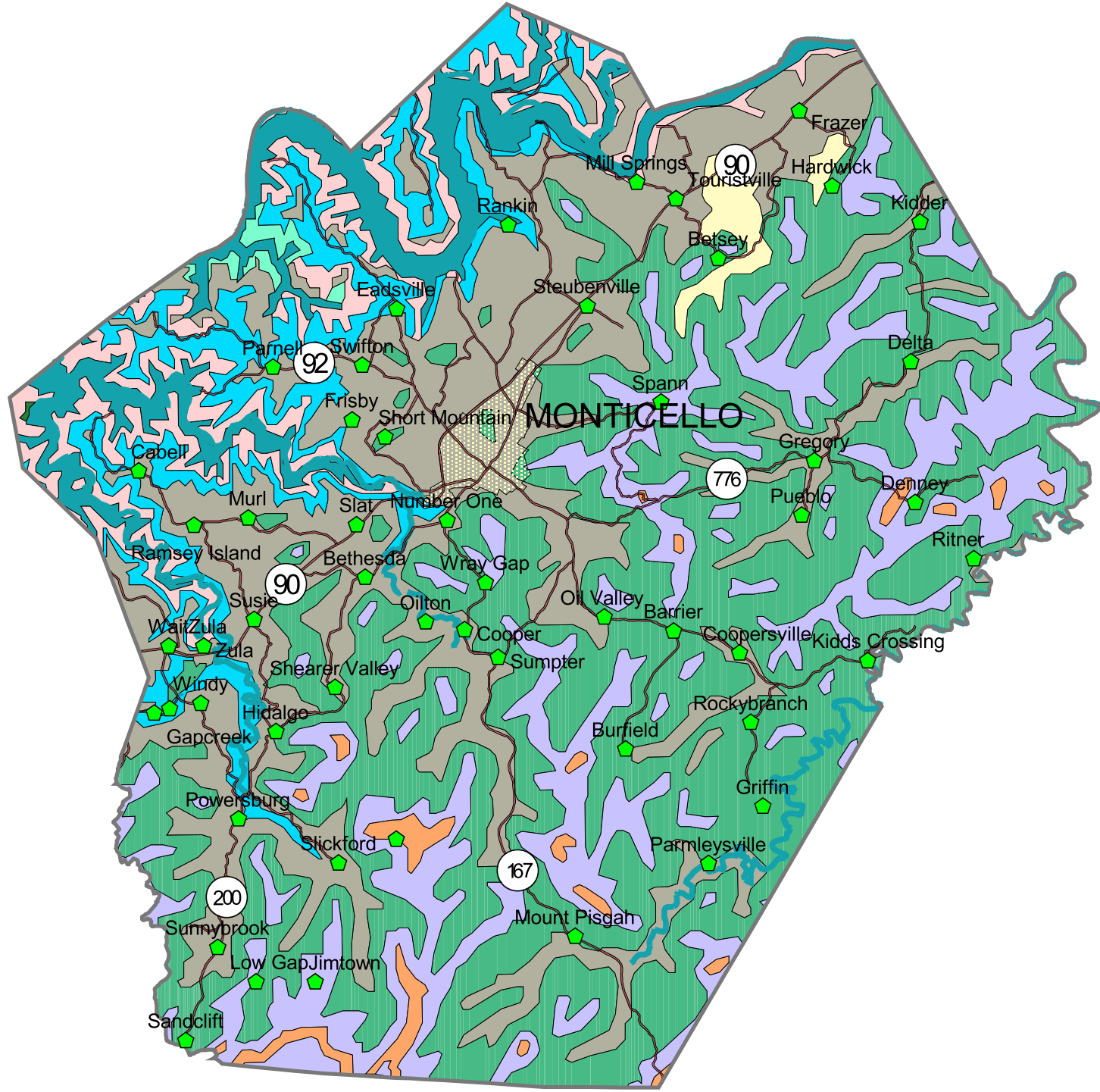


Wayne County Geology

(Source: Geologic Map of Kentucky, Scale, 1:500,000)



- Alluvium
- Breathitt Group, lower
- Grundy, Alvy Creek Formations
- Paragon Formation, Bangor Limestone, Hartselle Formation, Kidder Limestone
- Ste. Genevieve, St. Louis Limestones
- Salem, Warsaw Formations
- Fort Payne Formation
- Fort Payne Formation (limestone bodies)
- Knifely Sandstone Member
- Water

