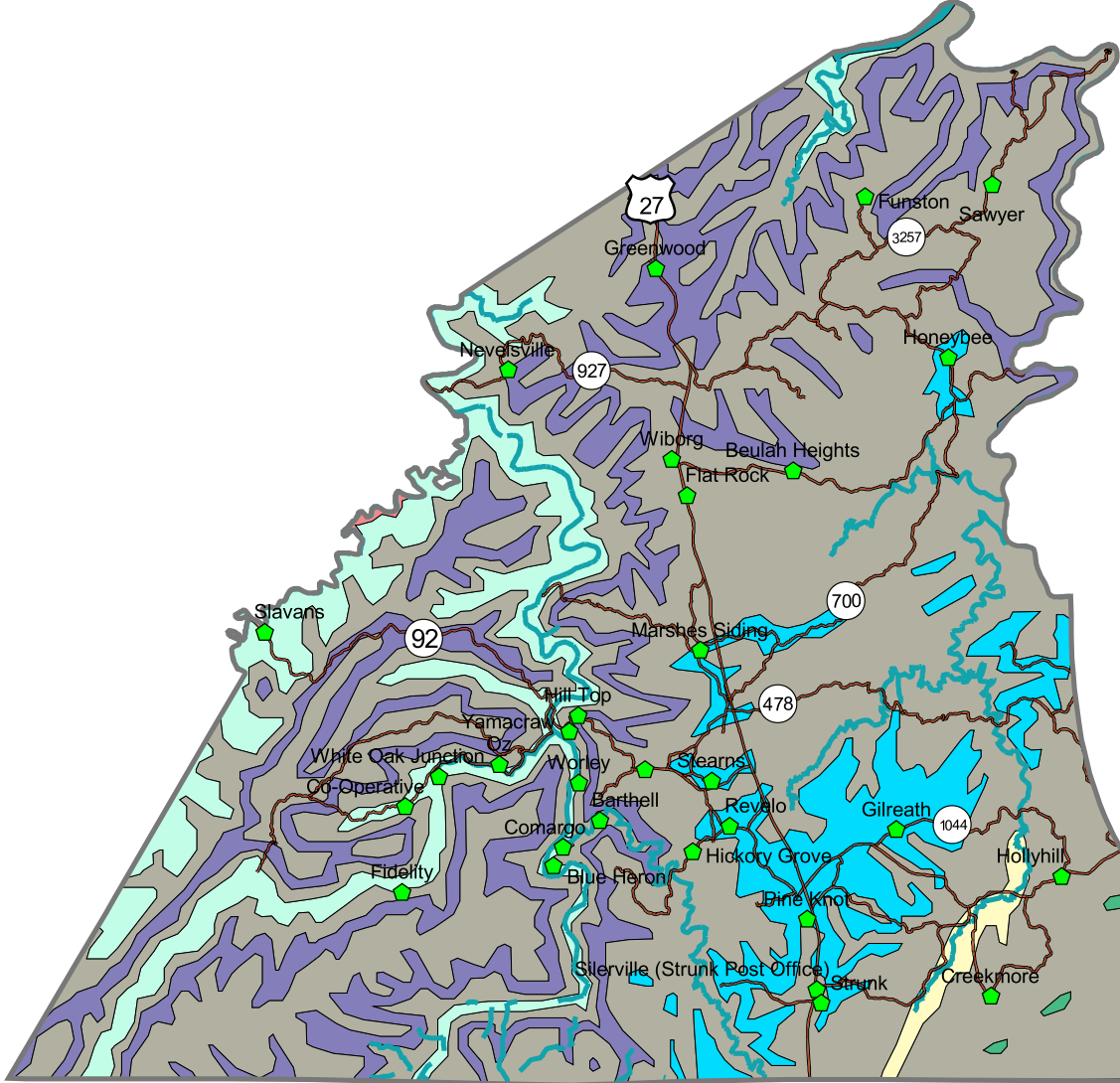


McCreary County Geology

(Source: Geologic Map of Kentucky, Scale, 1:500,000)



- Alluvium
- Breathitt Group, middle
- Breathitt Group, lower
- Grundy, Alvy Creek Formations (Corbin Sandstone Member)
- Grundy, Alvy Creek Formations (Rockcastle Sandstone Member)
- Paragon Formation, Bangor Limestone, Hartselle Formation, Kidder Limestone
- Ste. Genevieve Limestone
- Water

