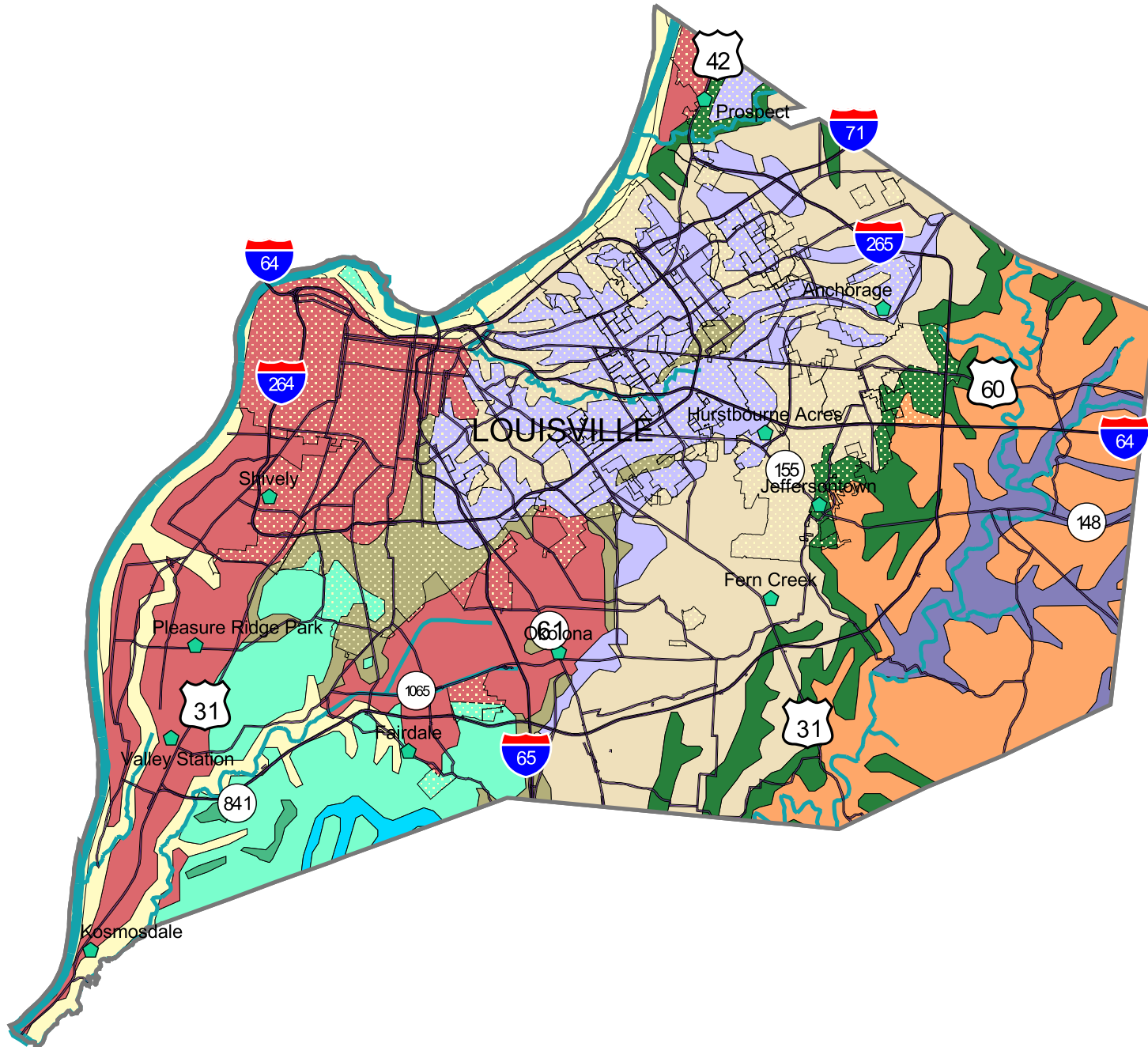


# Jefferson County Geology

(Source: Geologic Map of Kentucky, Scale, 1:500,000)



- Alluvium
- Glacial Sediments
- Middle Mississippian Limestone
- Borden Formation, (Renfro, Muldraugh, Fort Payne)
- Borden Formation (New Providence)
- New Albany Shale
- Devonian Limestones
- Louisville Limestone, Waldron Shale
- Laurel Dolomite, Osgood, Brassfield Formations
- Drakes Formation
- Grant Lake Limestone, Fairview Formation, Calloway Creek Limestone

