

Table with 4 columns: SYSTEMS AND GLACIATION, QUATERNARY, HERIQUARTER, MISSISSIPPIAN, DEVONIAN, SILURIAN, Ordovician, Middle and Upper Devonian, and Lower and Upper Devonian. Rows list geological formations and their lithologies.

Table with 2 columns: DESCRIPTION OF MAPPER UNITS and Lithology. Rows describe geological units such as Alluvium, Alluvium and lacustrine deposits, and various limestone and shale formations.

EXPLANATION table with 2 columns: Symbol and Description. Lists symbols for Interstate highway/parkway, U.S. highway, City boundary, Active sand quarry or mine, etc.

NOTE: cross section is diagrammatic vertical exaggeration 8x. Includes a small cross-section diagram showing geological layers.

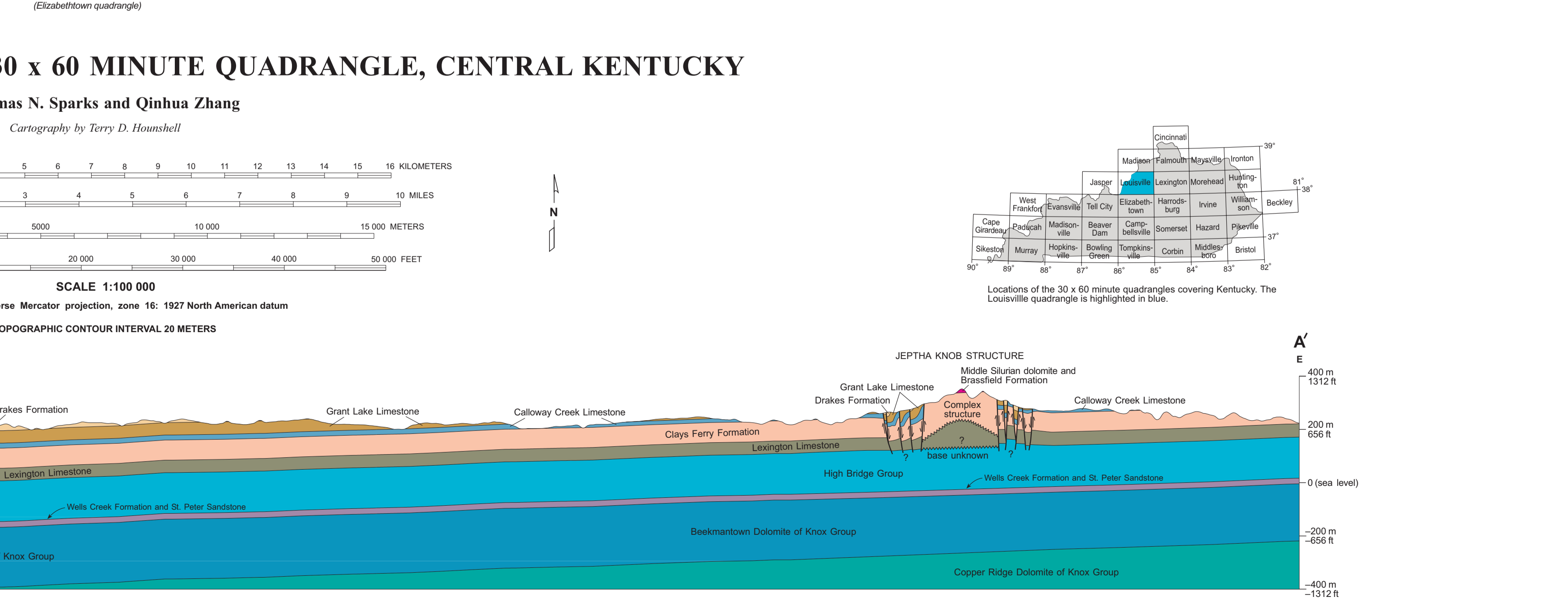
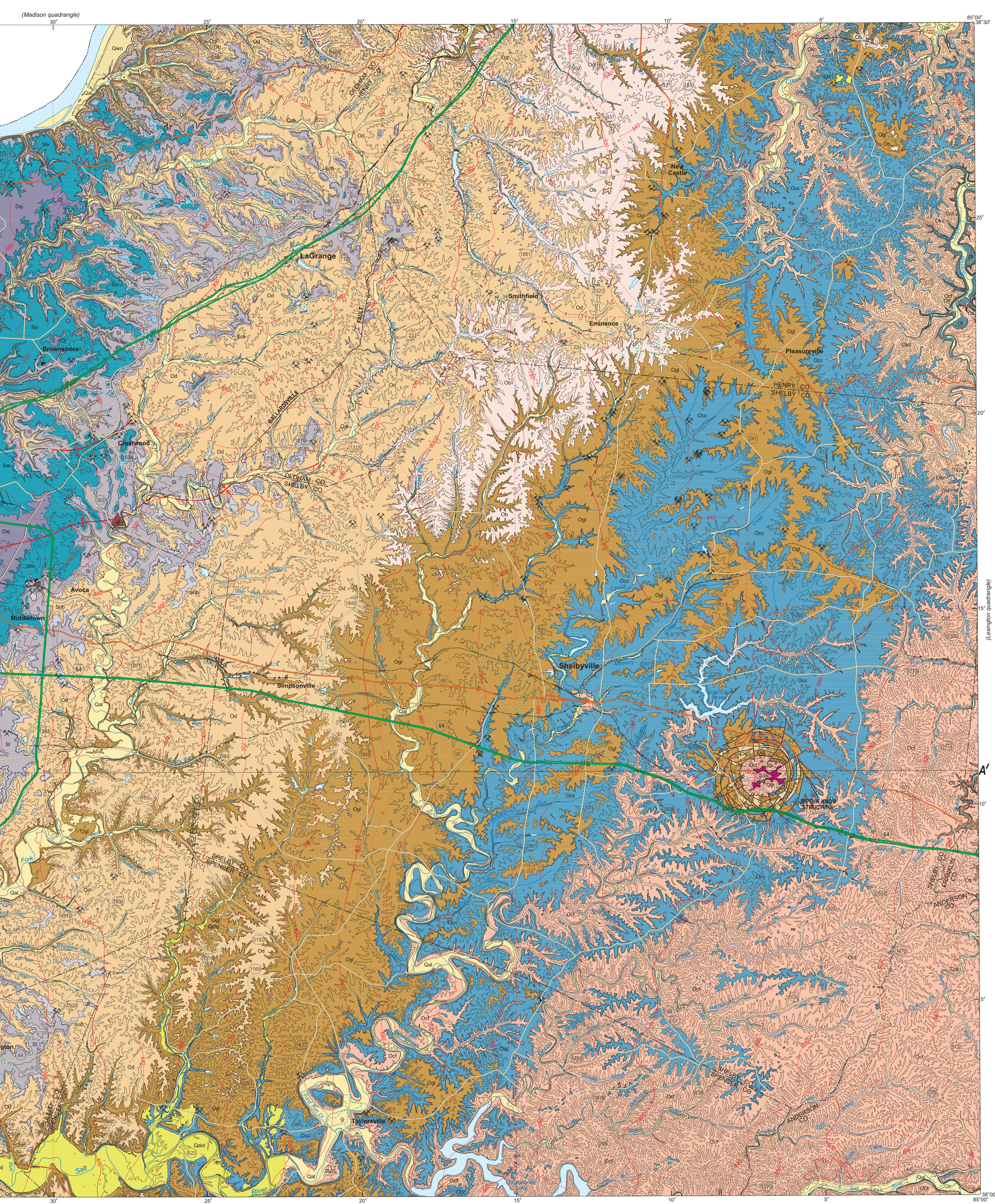
ACKNOWLEDGMENTS: This map was digitally generated from a 1:250,000-scale geologic map under the leadership of James C. Cobb, State Geologist and Director of the Kentucky Geological Survey.

DISCLAIMER: Although this map was compiled from digital data that were successfully processed on a computer system at the Kentucky Geological Survey, the views and conclusions contained in this document are those of the authors and should not be construed as an endorsement or approval of the U.S. Government.

For information on obtaining copies of this map and other Kentucky Geological Survey maps and publications call: 1-800-225-3889. Visit the KGS World Wide Web site at www.uky.edu/kgs

PUBLICATION DATA: 800-225-3889. Visit the KGS World Wide Web site at www.uky.edu/kgs

© 2003, University of Kentucky, Kentucky Geological Survey



INTRODUCTION: The geology of the Louisville 30 x 60 minute quadrangle was digitally compiled from U.S. Geological Survey 7.5-minute geologic quadrangle maps (GQs) and 1:250,000-scale geologic maps. The geology of the Louisville 30 x 60 minute quadrangle was digitally compiled from U.S. Geological Survey 7.5-minute geologic quadrangle maps (GQs) and 1:250,000-scale geologic maps. The geology of the Louisville 30 x 60 minute quadrangle was digitally compiled from U.S. Geological Survey 7.5-minute geologic quadrangle maps (GQs) and 1:250,000-scale geologic maps.