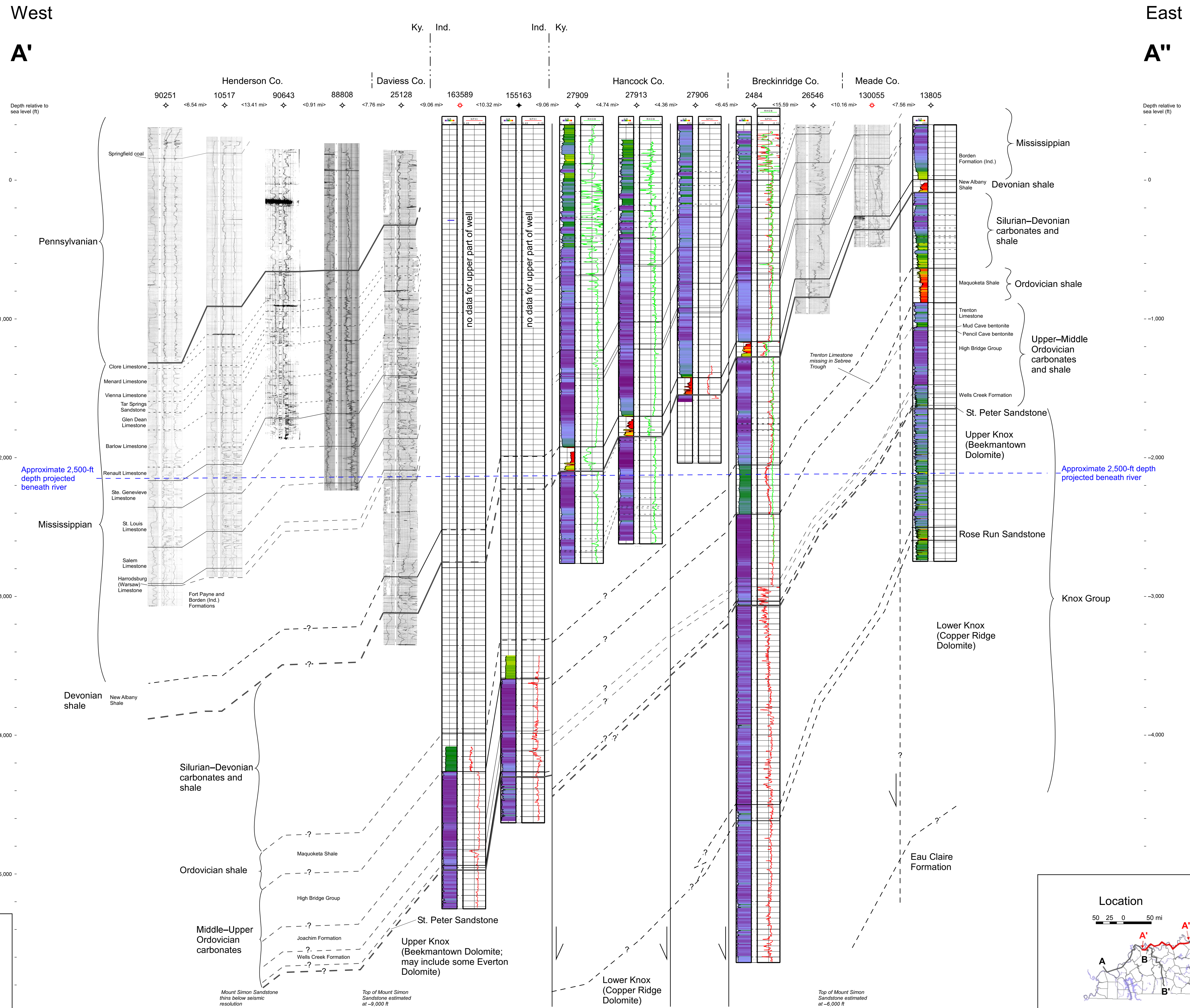


Plate 4.2.
Ohio River (west-central) cross section,
Chapter 4: Geologic Carbon Storage
(Sequestration) Potential in Kentucky



The rock unit intervals correlated in this cross section are described in the accompanying report. Correlations represent interpretations of approximate depths and thicknesses of the units based on available data. Actual depths and thicknesses may vary, especially in faulted areas. It is also important to understand that an interval described as a potential saline reservoir will not have characteristics that allow injection and carbon storage across the entire thickness shown. Potential storage will only be possible in much smaller zones of those intervals, as discussed in the accompanying report.

EXPLANATION

Correlation lines (dashed where inferred):

- Regional unconformity
- Sequestration interval
- Formation level
- Member and bed level
- Undiscussed correlation

Faults

- Arrow on downthrown side.

Gamma-ray log intensity

0 400

No horizontal scale

