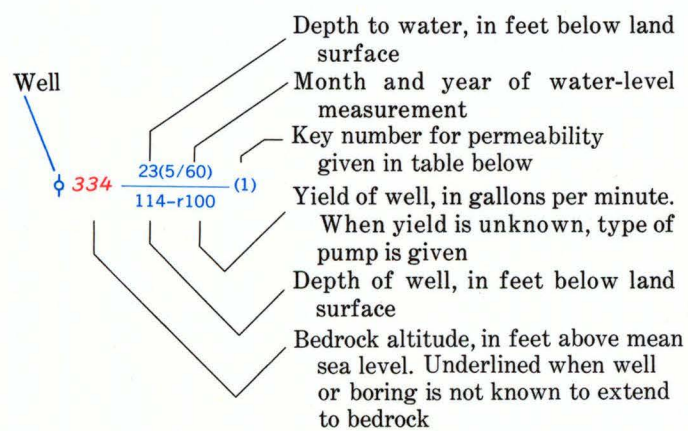
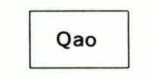


- EXPLANATION**
- Note: well symbols may be combined on map
 - Well, drilled, bored or jetted
 - Well, driven
 - Well, dug
 - Well, water-level observation
 - Well, chemical analysis available
 - Well, log available
 - Well, chemical analysis and log available
 - Multiple well system
 - Test boring or sounding
- | TYPE OF PUMP | YIELD |
|--------------|-----------|
| H | e |
| Hand | Estimated |
| P | r |
| Power | Reported |
| N | m |
| None | Measured |



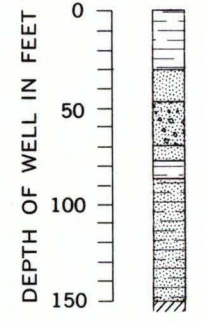
Key number	Permeability (spd/sq ft)	Depth, in feet below top of bank
(1)	750	8
(1)	70	10
(1)	560	15
(1)	200	21

MAP SYMBOLS

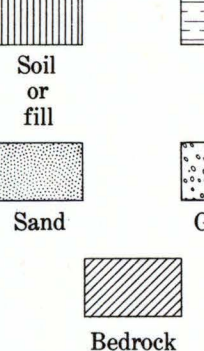


Contour on bedrock
Dashed where approximately located; contour interval 10 feet; datum is mean sea level

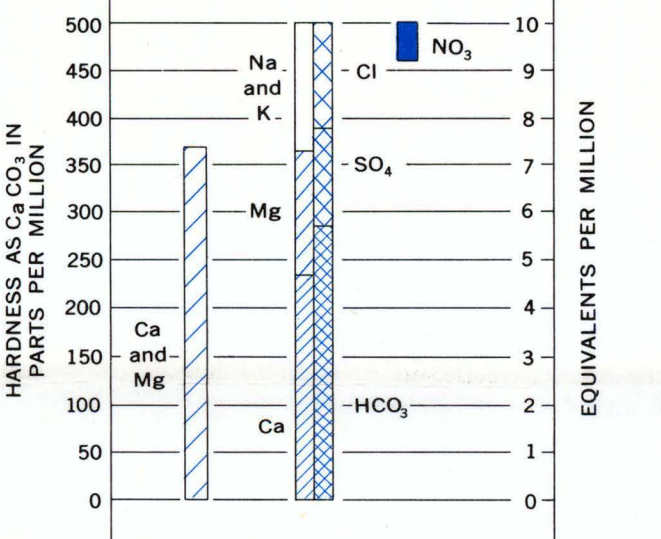
WELL LOG



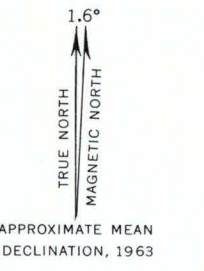
LOG SYMBOLS



CHEMICAL ANALYSES



Hardness is read only to top of magnesium or sum of calcium and magnesium. When amount of nitrate is less than 10 parts per million (0.161 equivalents) it is combined with chloride. Bicarbonate and the sum of sodium and potassium are shown by dashed lines if estimated.

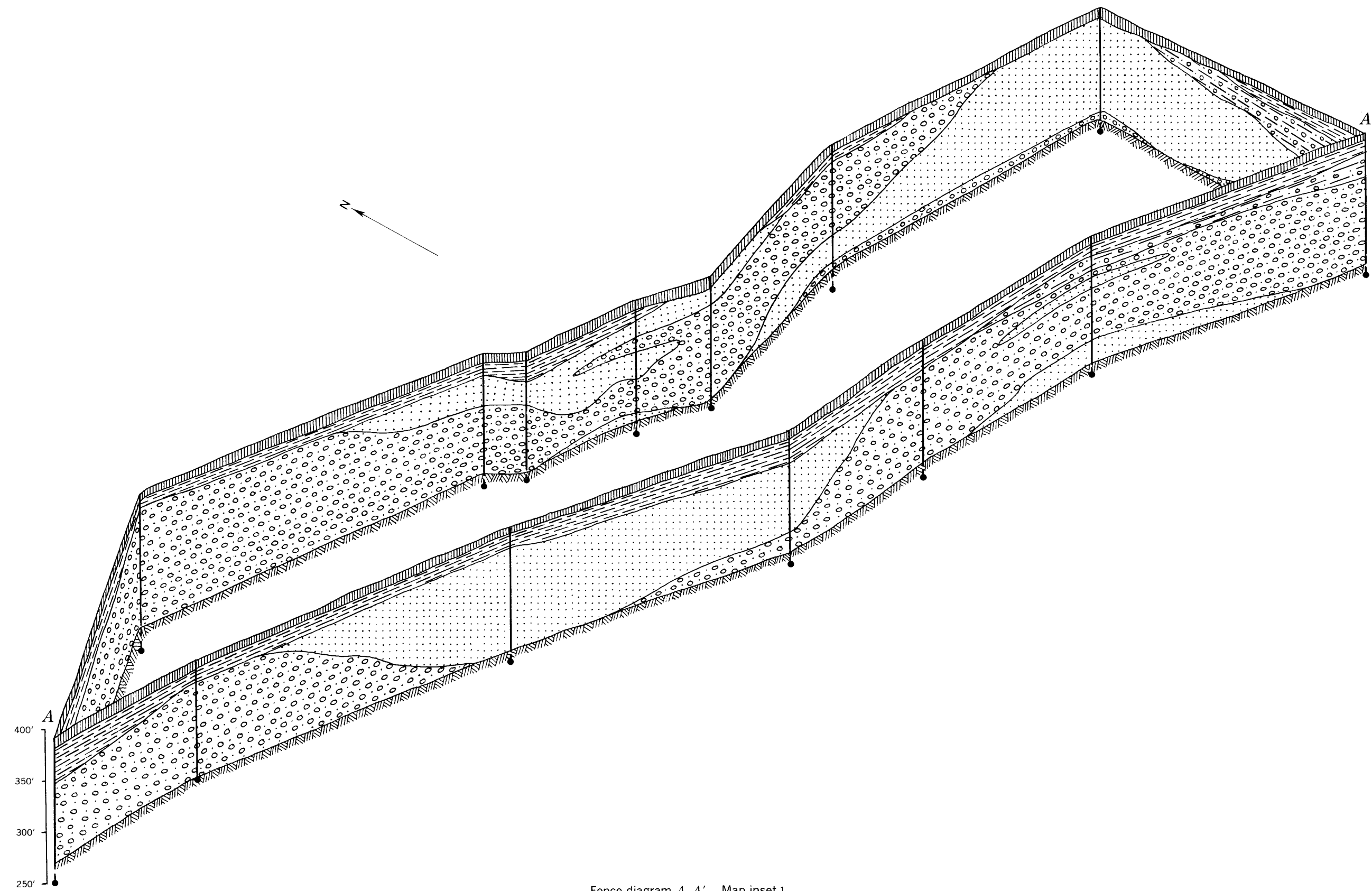


Base map compiled from U.S. Geological Survey 7½-minute topographic quadrangles

INTERIOR-GEOLOGICAL SURVEY, WASHINGTON, D. C. - W63160

GEOLOGY AND HYDROLOGY OF ALLUVIAL DEPOSITS ALONG THE OHIO RIVER IN THE SPOTTSVILLE AND REED AREAS, KENTUCKY

By
John T. Gallaher
1963



Fence diagram A-A': Map inset 1
Datum plane 270 feet above mean sea level

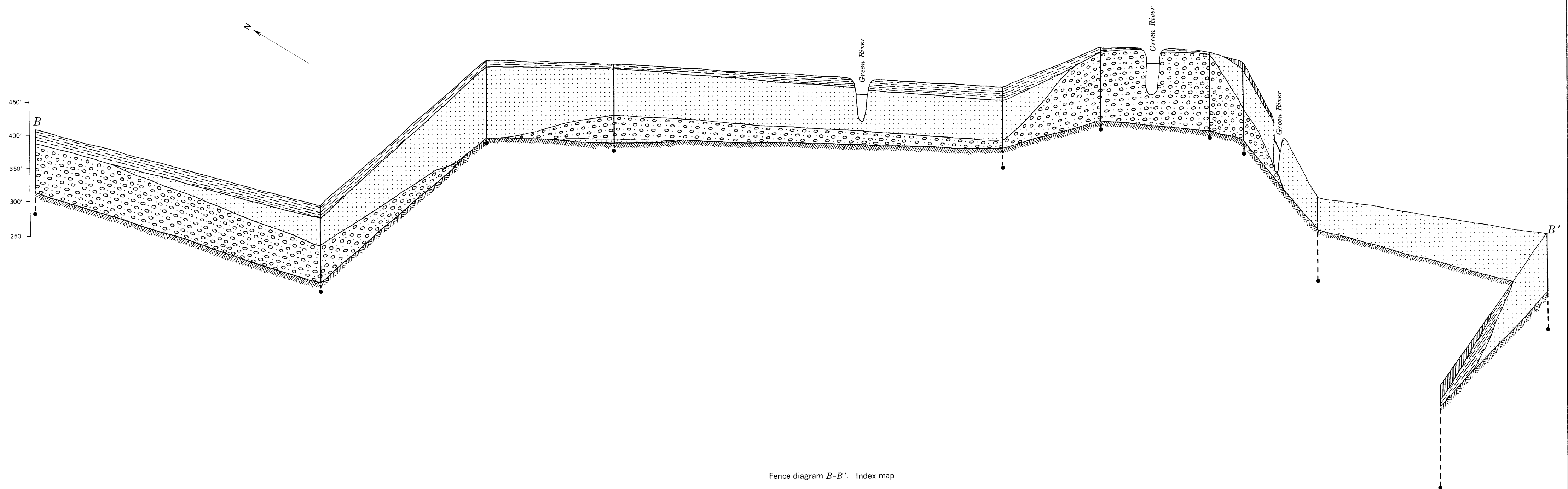
EXPLANATION

- Soil or fill
- Clay or silt
- Sand
- Gravel
- Bedrock

- Well or test boring
- Dot represents the projected position of well or test boring on an imaginary datum plane

Approximate boundary between lithologic units, generally gradational

See sheet 1 for locations of fence diagrams



Fence diagram B-B': Index map

Isometric projection at planimetric scale - 1 inch=2000 feet
Datum plane 250 feet above mean sea level

SECTIONS AND FENCE DIAGRAMS OF ALLUVIAL DEPOSITS ALONG THE OHIO RIVER IN THE SPOTTSVILLE AND REED AREAS, KENTUCKY

By
John T. Gallaher
1963