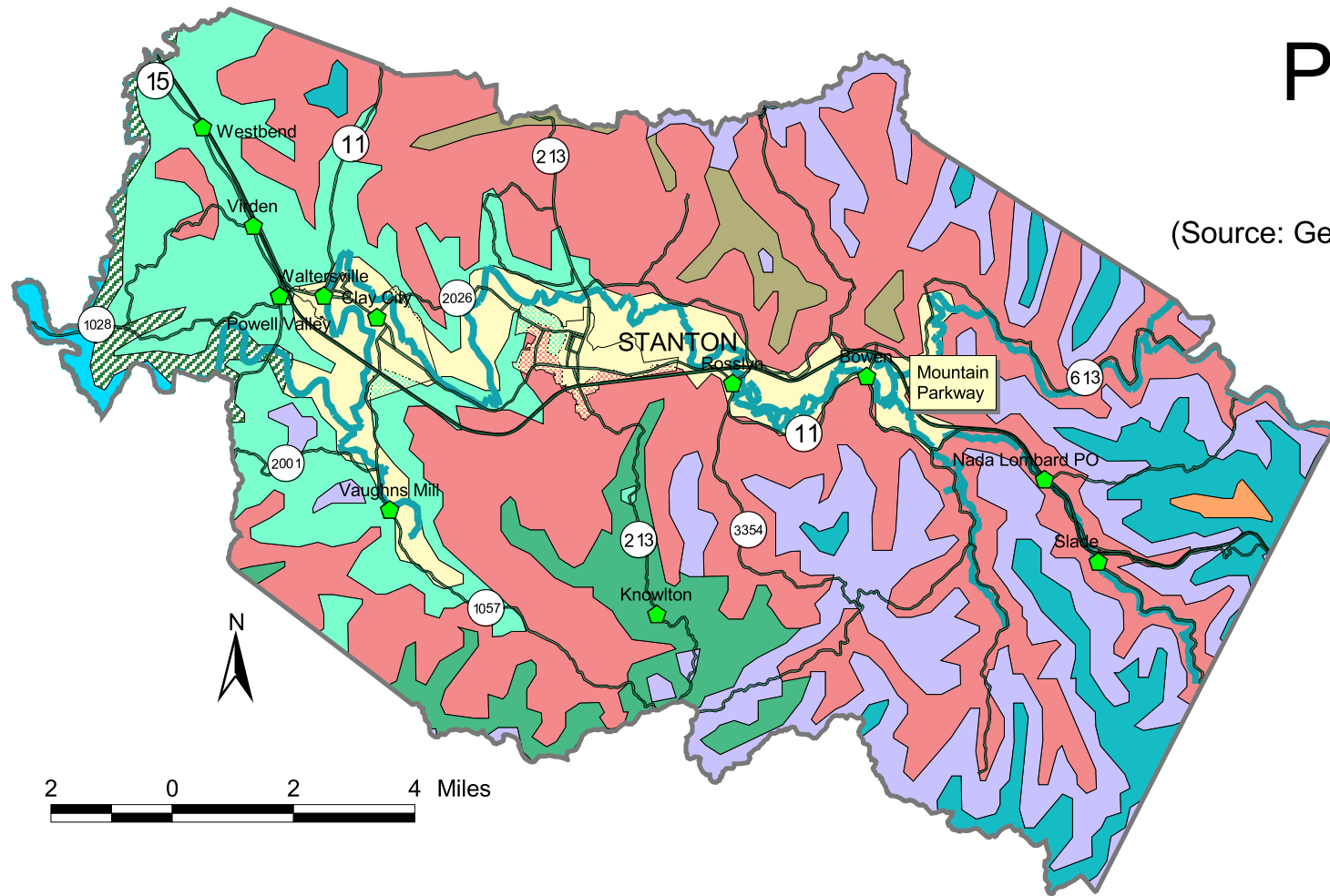


Powell County Geology

(Source: Geologic Map of Kentucky, Scale, 1;500,000)



- Alluvium
- Breathitt Group, middle
- Breathitt Group, lower
- Grundy Formation
- Paragon Formation
- Slade Formation
- Borden Formation
- New Albany Shale, Boyle Dolomite
- Crab Orchard Formation, Brassfield Dolomite
- Drakes Formation