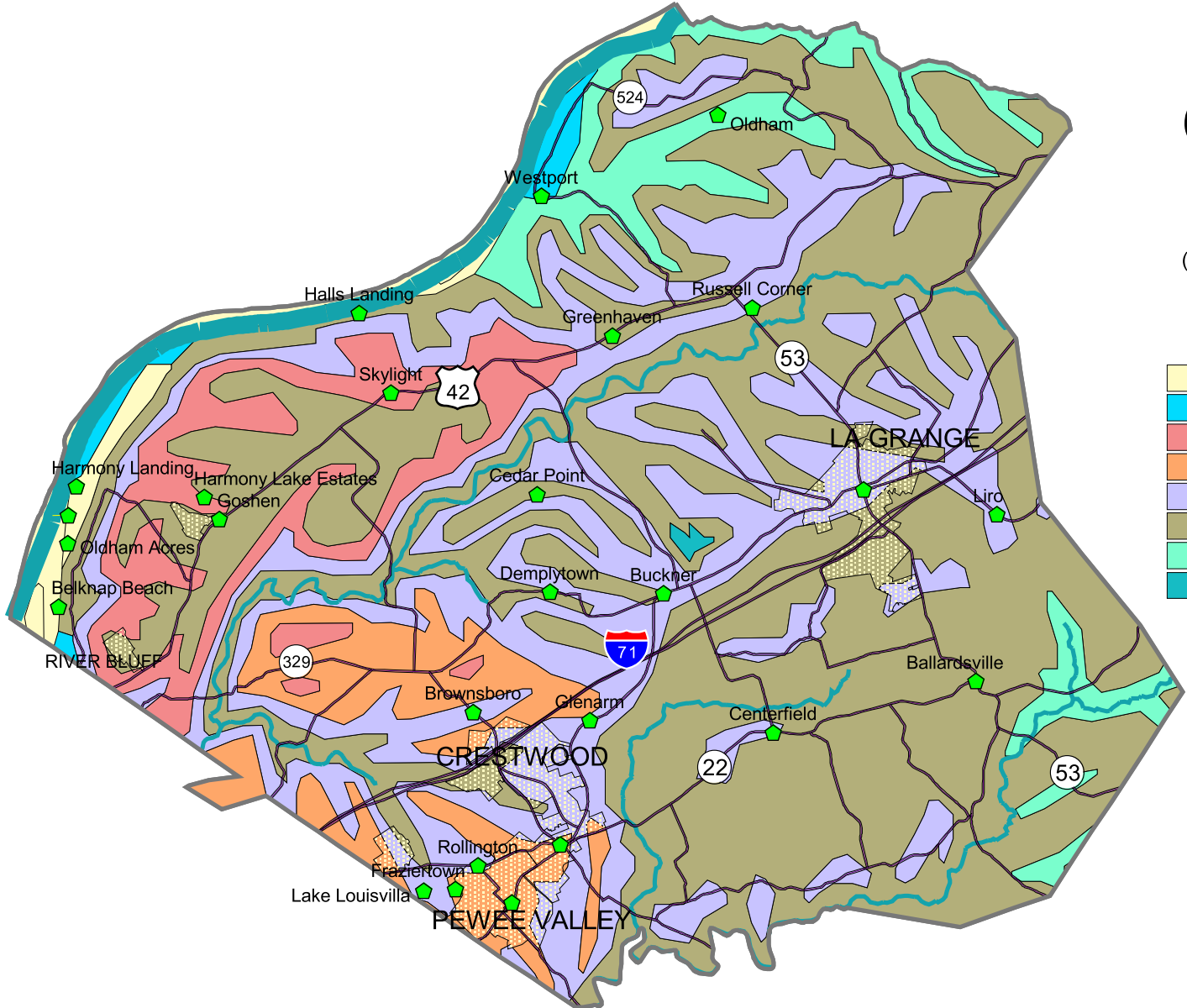


Oldham County Geology

(Source: Geologic Map of Kentucky, Scale, 1:500,000)



- Alluvium
- Glacial Sediments
- Devonian Limestones
- Louisville Limestone, Waldron Shale
- Laurel Dolomite, Osgood, Brassfield Formations
- Drakes Formation
- Bull Fork Formation
- Water

