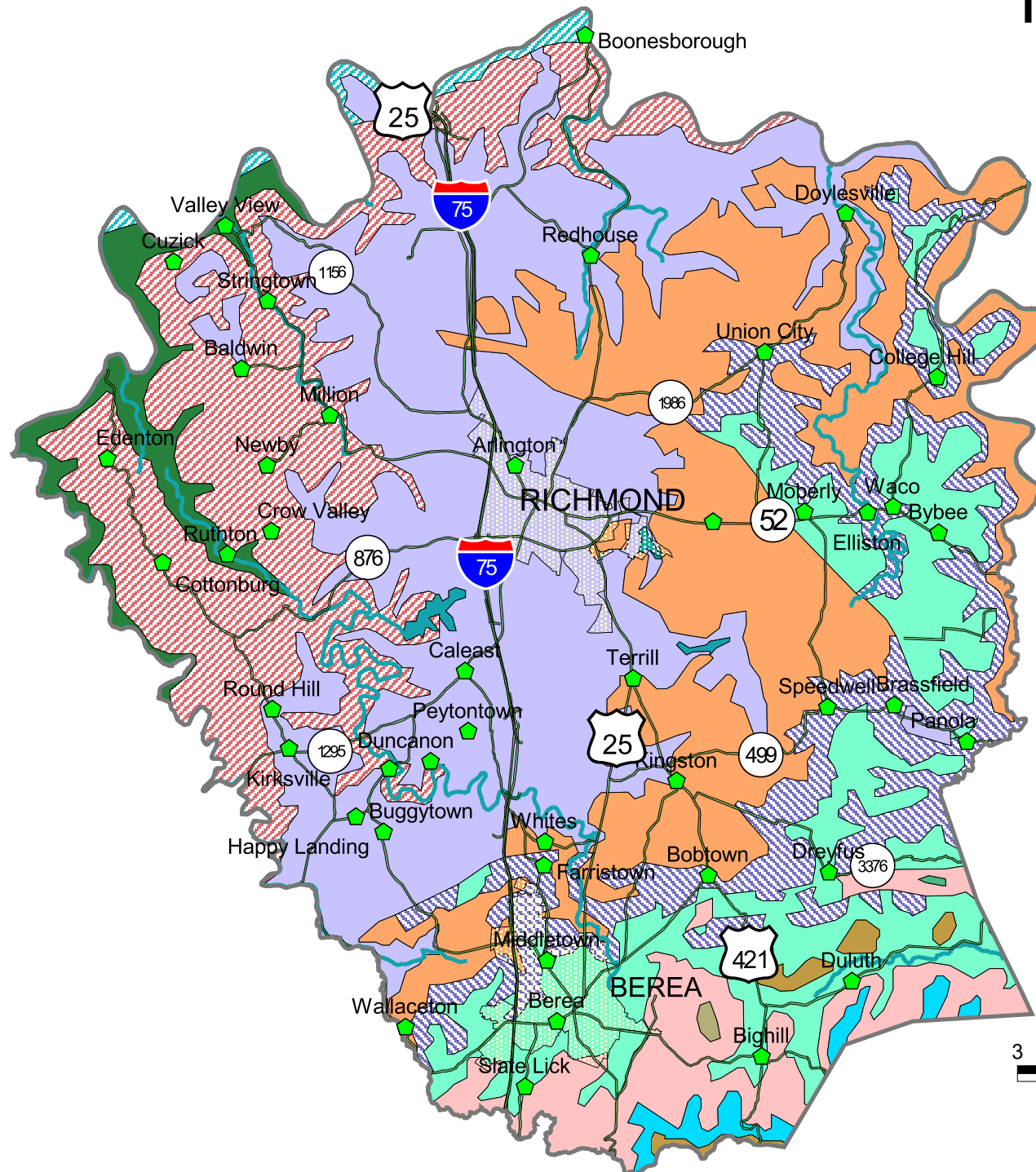


# Madison County

## Geology

(Source: Geologic Map of Kentucky, Scale, 1:500,000)



-  Breathitt Group, lower
-  Slade Formation
-  Slade Formation (Newman Limestone)
-  Borden Formation (Renfro, Muldraugh Members)
-  Borden Formation
-  New Albany Shale, Boyle Dolomite
-  Crab Orchard Formation, Brassfield Dolomite
-  Drakes Formation
-  Ashlock Formation, Calloway Creek Limestone
-  Garrard Siltstone, Clays Ferry, Kope Formation
-  Lexington Limestone
-  High Bridge Group
-  Water

