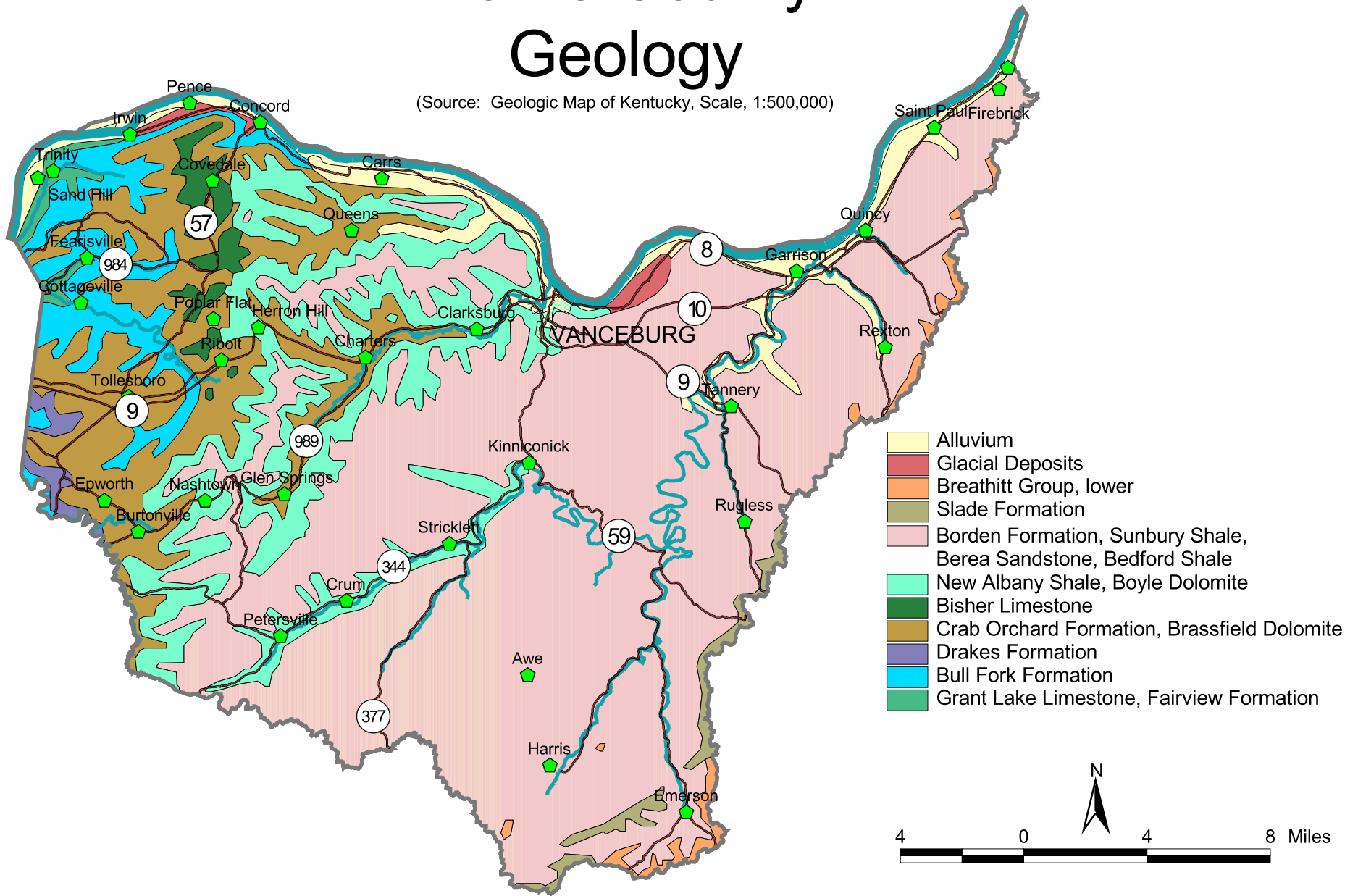


Lewis County Geology

(Source: Geologic Map of Kentucky, Scale, 1:500,000)



- Alluvium
- Glacial Deposits
- Breathitt Group, lower
- Slade Formation
- Borden Formation, Sunbury Shale, Berea Sandstone, Bedford Shale
- New Albany Shale, Boyle Dolomite
- Bisher Limestone
- Crab Orchard Formation, Brassfield Dolomite
- Drakes Formation
- Bull Fork Formation
- Grant Lake Limestone, Fairview Formation

