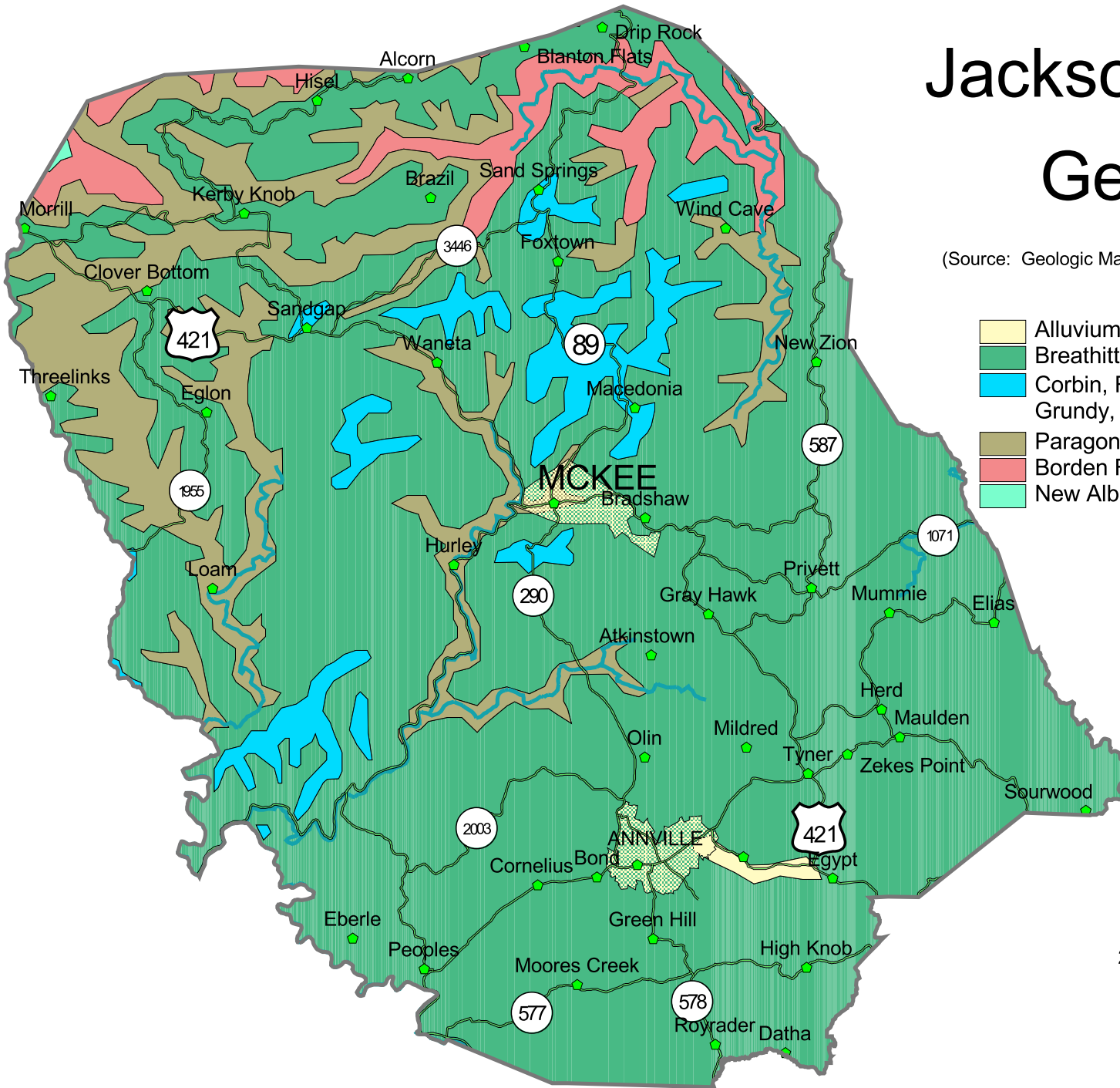


# Jackson County Geology

(Source: Geologic Map of Kentucky, Scale, 1:500,000)



- Alluvium
- Breathitt Group, lower
- Corbin, Rockcastle Sandstone Members, Grundy, Alvy Creek, Bee Rock Formations
- Paragon Formation
- Borden Formation
- New Albany Shale, Boyle Dolomite

